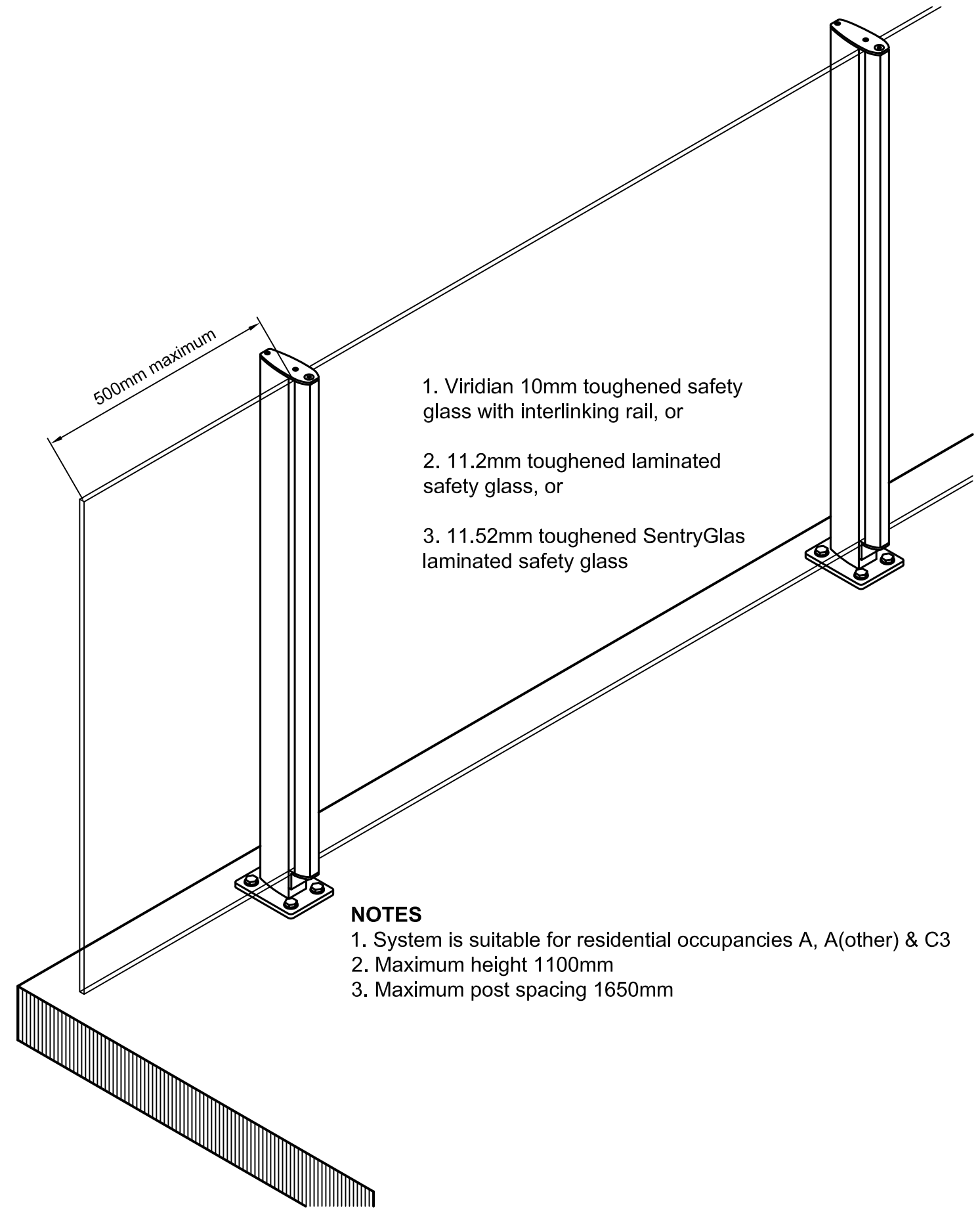


1. Viridian 10mm toughened safety glass with interlinking rail, or
2. 11.2mm toughened laminated safety glass, or
3. 11.52mm toughened SentryGlas laminated safety glass



1. Viridian 10mm toughened safety glass with interlinking rail, or
2. 11.2mm toughened laminated safety glass, or
3. 11.52mm toughened SentryGlas laminated safety glass

NOTES

1. System is suitable for residential occupancies A, A(other) & C3
2. Maximum height 1100mm
3. Maximum post spacing 1650mm

This post is protected by Design Registration # 413097 in New Zealand

NOTES:

1. This proprietary balustrade system complies with New Zealand Building Code Clauses B1 Structure, B2 Durability, F2 Hazardous Building Materials and F4 Safety From Falling Third Edition, subject to:

-all products meeting their required performance specification

-site installation carried out in accordance with the intent of this drawing

2. Based on design loads from AS/NZS 1170.1 and a maximum ult wind pressure of 2.13 kPa (extra high wind zone), maximum span between posts and glass thicknesses are:

Residential occupancies A, A(other) & C3 of Table 3.3 AS/NZS 1170.1:

Span between posts -1650mm

Viridian safety glass options according to 22.4.3. of NZS 4223.3:2016 are:

- a. 10mm toughened glass with interlinking rail
- b. 11.2mm toughened laminated glass
- c. 11.52mm toughened SentryGlas laminated glass

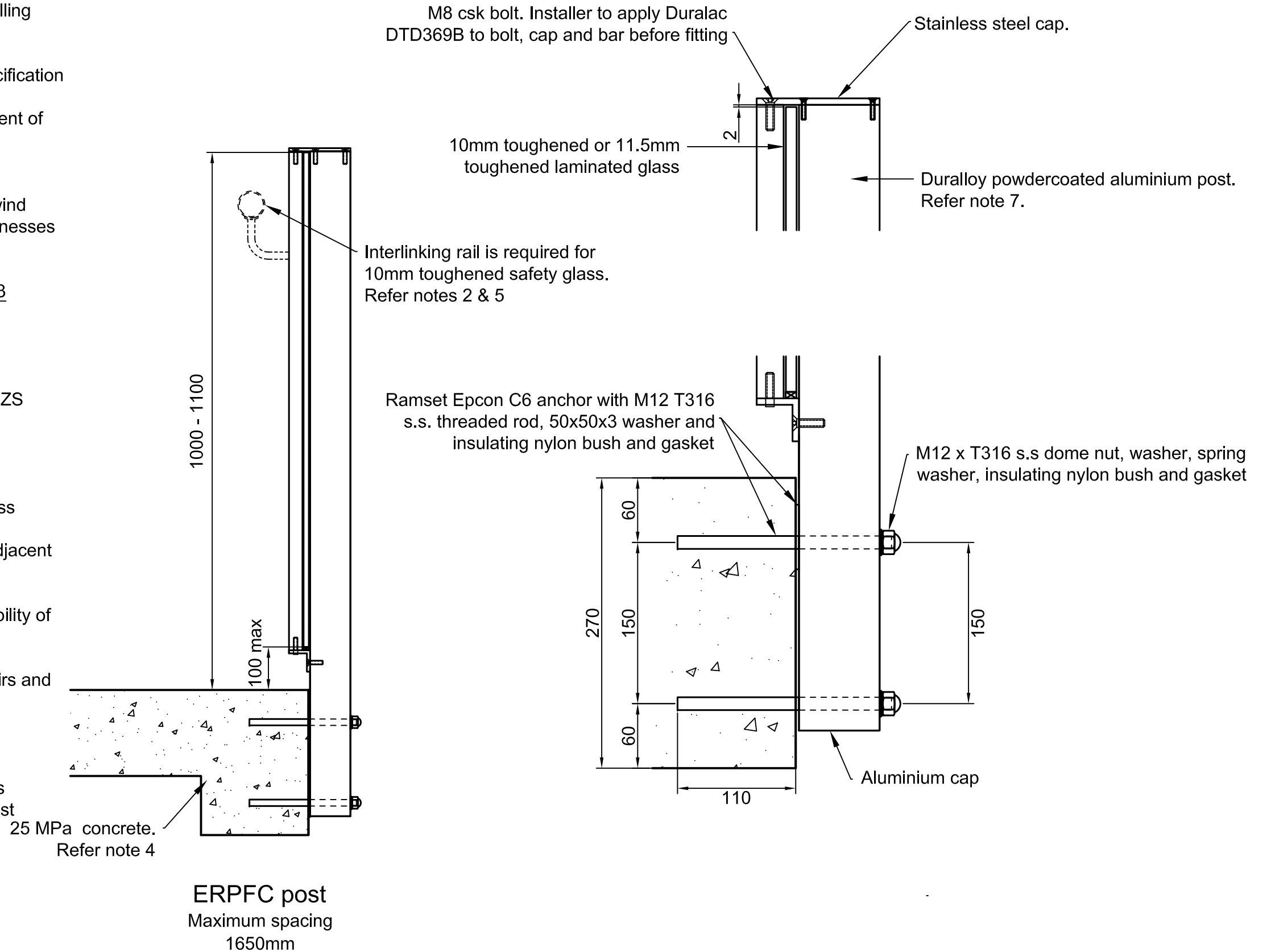
Interlinking rail must be connected to Milano posts, adjacent glass panes or to the building.

3. The design of the concrete support is the responsibility of others.

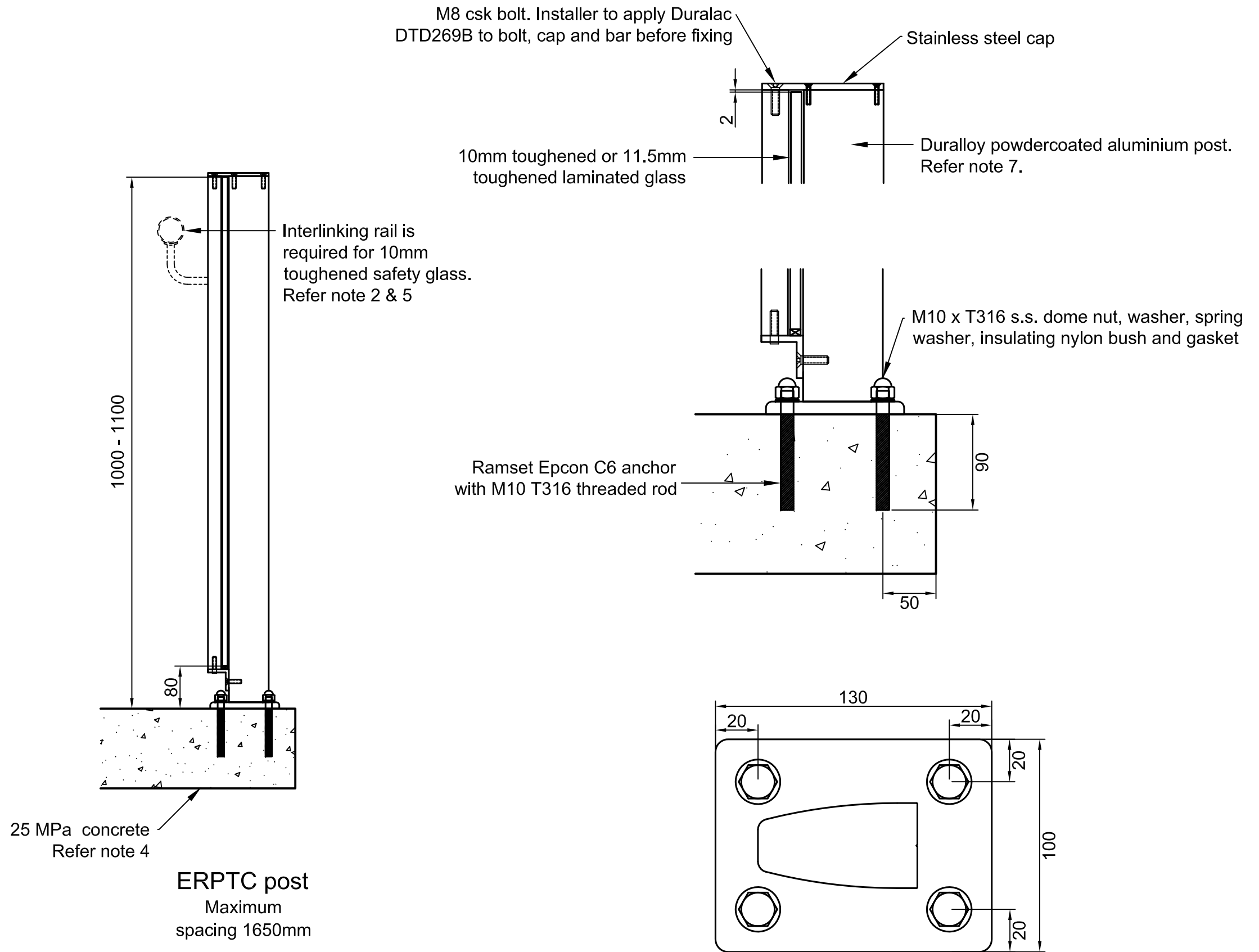
4. A handrail of 32-50mm diameter is required for stairs and ramps exceeding 1:20 slope. Refer NZBC D1/AS1.

5. Use grade 316 stainless steel fixings and washers

6. Duratec powdercoat or 25 micron anodised finish is recommended for installations within 100m of the coast



This post is protected by Design Registration # 413097 in New Zealand



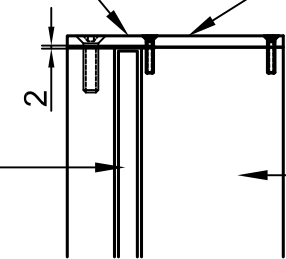
This post is protected by Design Registration # 413097 in New Zealand

M8 csk bolt. Installer to apply Duralac DTD369B to bolt, cap and bar before fitting

Stainless steel cap

10mm toughened or 11.5mm toughened laminated glass

Duralloy powdercoated aluminium post. Refer note 7.



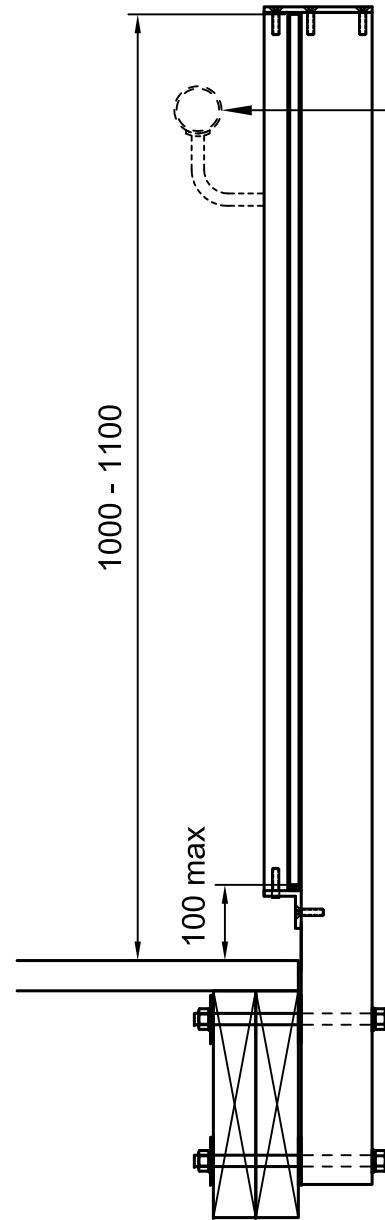
Interlinking rail is required for 10mm toughened safety glass. Refer note 2 & 5

50x50x3 s.s washer with nylon insulating washer and gasket to separate stainless steel and aluminium

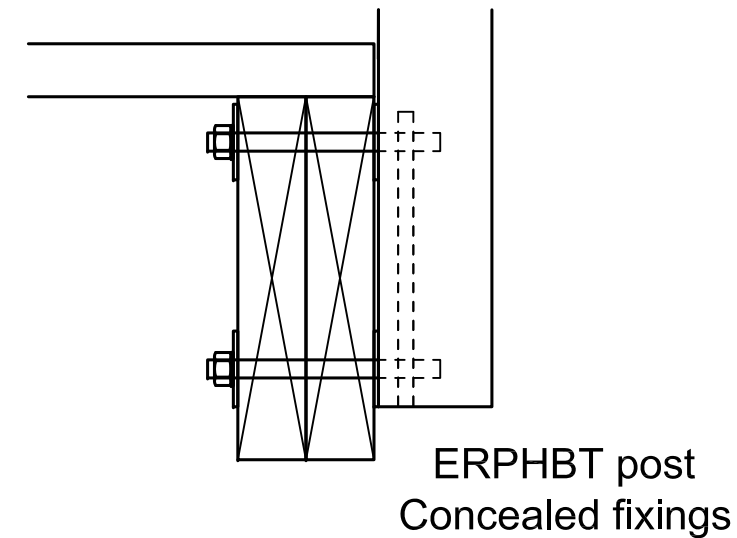
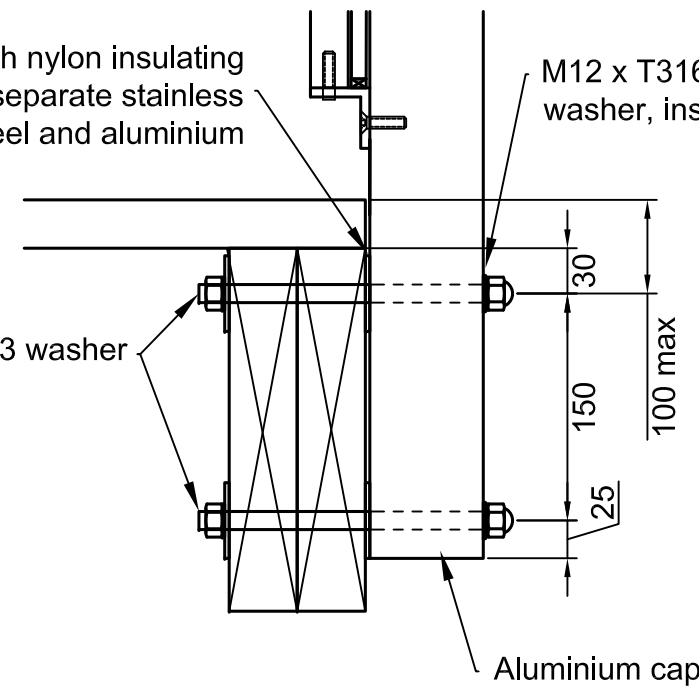
M12 x T316 s.s bolt, washer, spring washer, insulating nylon bush and gasket

T316 s.s nut & 50x50x3 washer

Aluminium cap

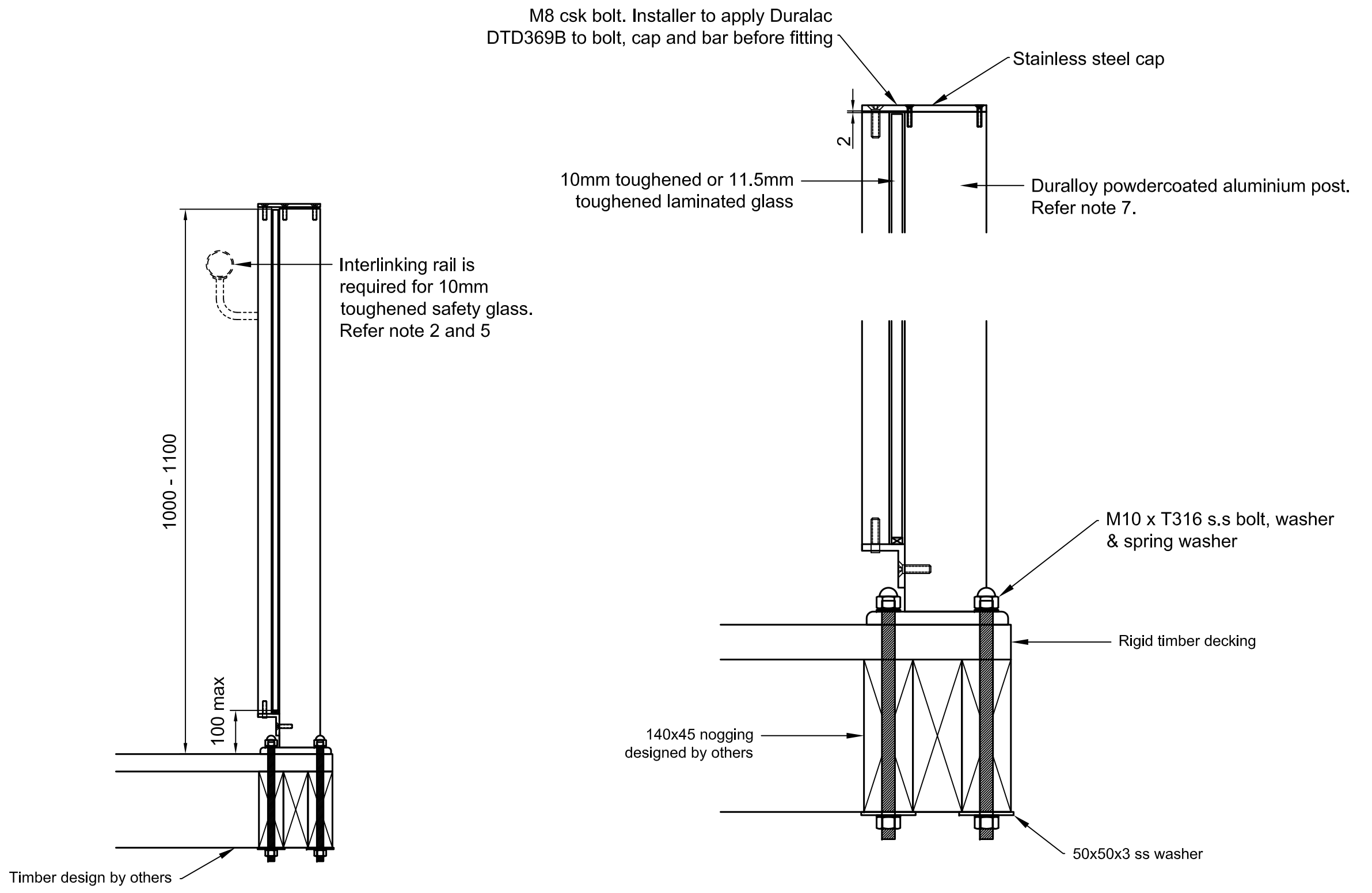


ERPFBT post
Maximum spacing
1650mm



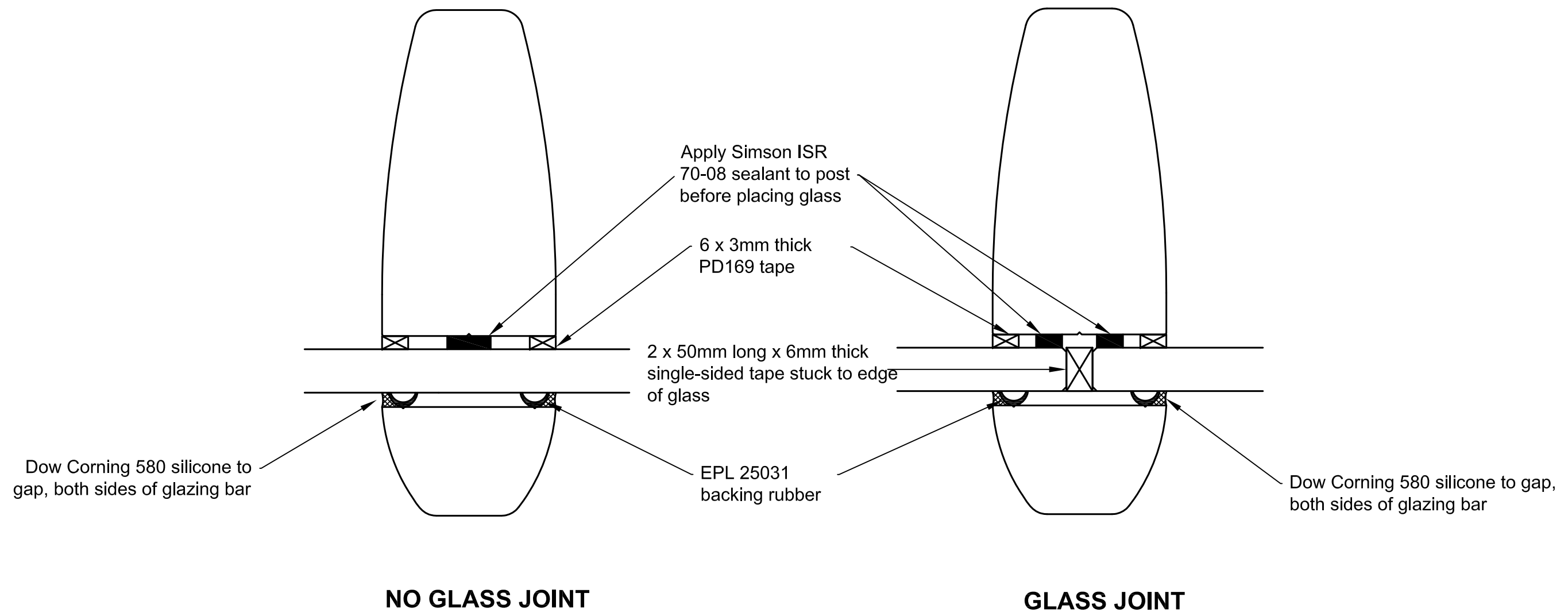
ERPHBT post
Concealed fixings

This post is protected by Design Registration # 413097 in New Zealand



ERPTT post
Maximum spacing
1650mm

This post is protected by Design Registration # 413097 in New Zealand



GLAZING DETAILS

This post is protected by Design Registration # 413097 in New Zealand