

NOTES:

1. This proprietary balustrade system complies with New Zealand Building Code Clauses B1 Structure, F2 Hazardous Building Materials and F4 Safety From Falling Third Edition, subject to:

-all products meeting the required performance specification
 -site installation carried out in accordance with the intent of this drawing

2. Based on design loads from Table 3.3 of AS/NZS 1170.1 and extra high wind zone or below, minimum safety glass thicknesses according to 22.4.3 of NZS 4223.3:2016 and maximum balustrade heights measured from top of clamp are:

Occupancies B, E & C3 :

- a. Viridian 15mm toughened with interlinking rail, or
- b. 17.2mm toughened laminated glass with interlinking brackets, or
- c. 17.52mm toughened SentryGlas laminated glass (SentryGlas is a stiff interlayer that complies with 22.4.3 (c) of NZS 4223.3:2016.

Maximum height 1300 mm from top of clamp

Occupancies C1/C2 & D :

- a. 15mm "Balustrade 100" toughened safety glass up to 1100mm with interlinking rail at 900mm above finished floor level, or
- b. 19mm toughened safety glass with interlinking rail up to 1300mm, or
- c. 21.2mm toughened laminated glass with interlinking brackets up to 1300mm
- d. 21.52mm toughened SentryGlas laminated glass (SentryGlas is a stiff interlayer that complies with 22.4.3 (c) of NZS 4223.3:2016.

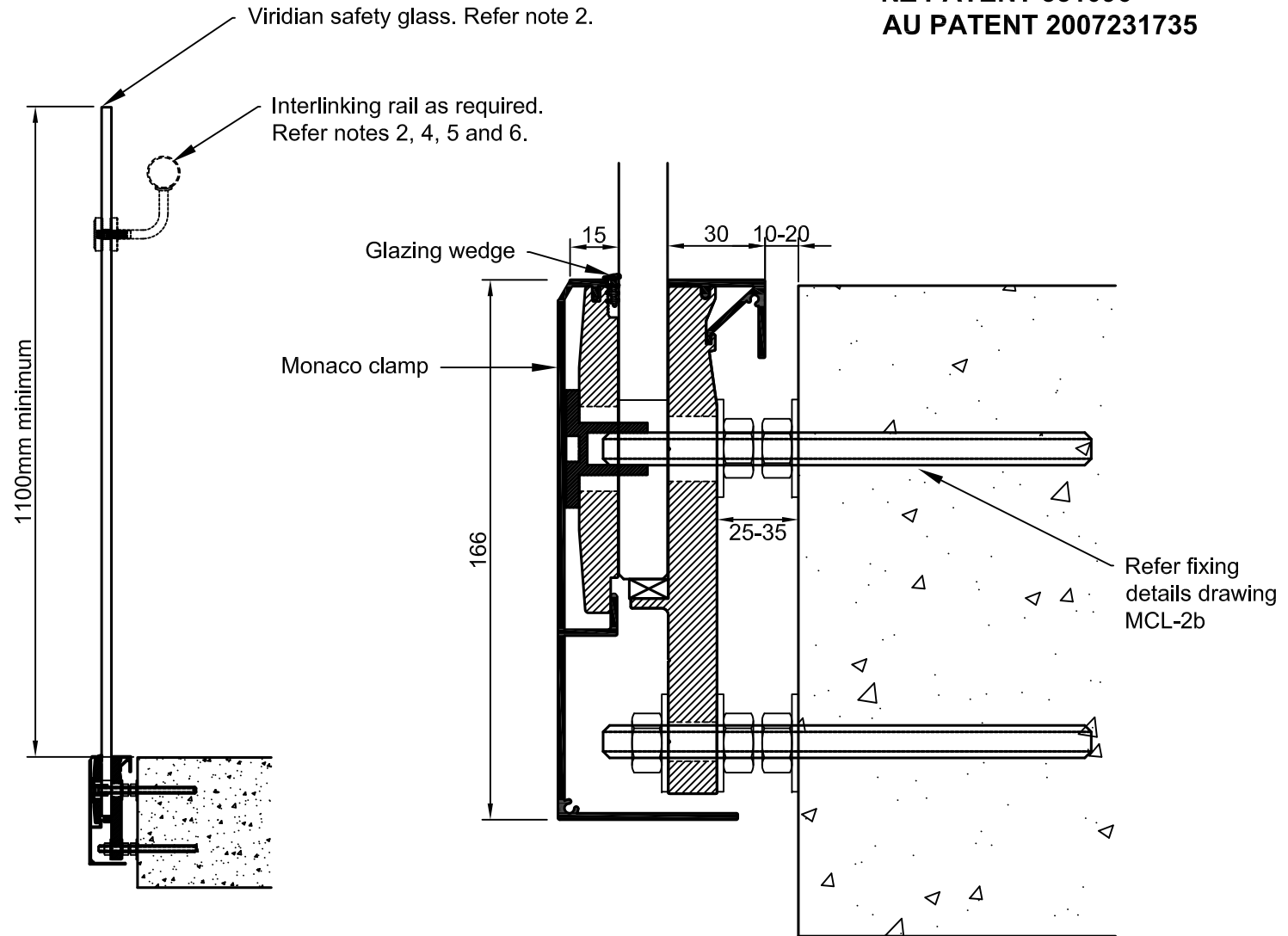
Interlinking rail or corner brackets must be connected to adjacent glass panes or the building.

3. Concrete, timber and steel design is the responsibility of others

4. A handrail of 32-50mm diameter is required for stairs and ramps exceeding 1:20 slope. Refer NZBC D1/AS1.

5. Minimum width of glass panel to be 1000mm unless connected by interlinking rail or corner brackets to adjacent panes or the building.

NZ PATENT 551096
AU PATENT 2007231735



A division of Viridian Glass Ltd Partnership

MONACO COMMERCIAL FACE FIX CLAMP

date 1-6-16

drawing no

scale 1:2 & 1:10

MCL-1f

NZ PATENT 551096
 AU PATENT 2007231735

