

NOTES:

1. This proprietary balustrade system complies with New Zealand Building Code Clause B1 Structure and B1/VM1, F2 Hazardous Building Materials and F4 Safety From Falling Third Edition, subject to:

All products meeting the required performance specification

Site installation carried out in accordance with the intent of this drawing

2. Based on barrier loads from AS/NZS 1170.1 and extra high wind zone (2.13 kPa) or less, maximum height H above floor level and safety glass options are:

For commercial occupancies C1/C2 & D of Table 3.3 AS/NZS 1170.1

Maximum height H 1120mm

Safety glass options according to 22.4.3 of NZS 4223.3:2016 are:

15mm toughened or 17.52mm toughened SentryGlas laminated glass with interlinking rail

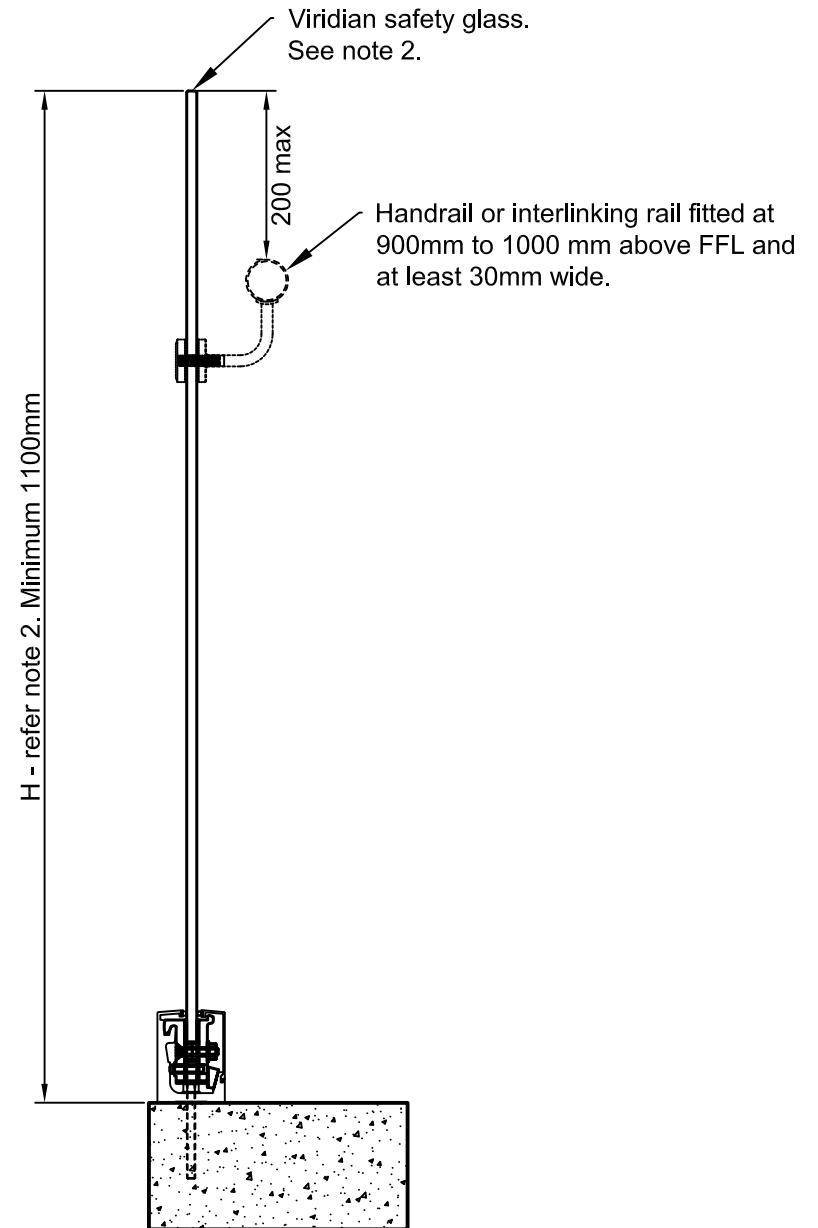
Interlinking rail must be connected to each glass pane, structural post, or building element as required by NZS 4223.3:2016

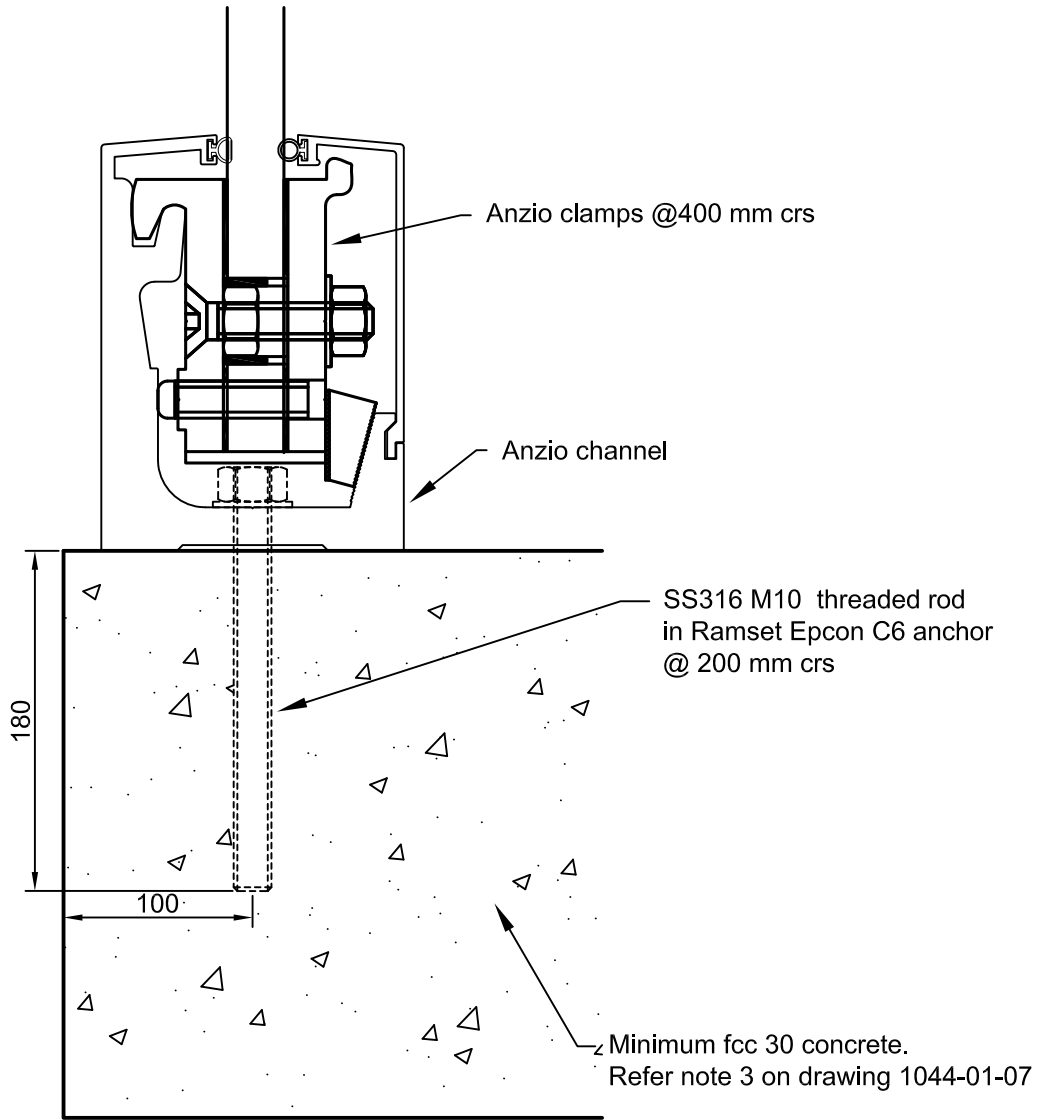
100% of the horizontal load is applied to the rail, and 50% to the top edge of the glass in accordance with 2.2.7 of B1/VM1.

3. Concrete and steel design is the responsibility of others.

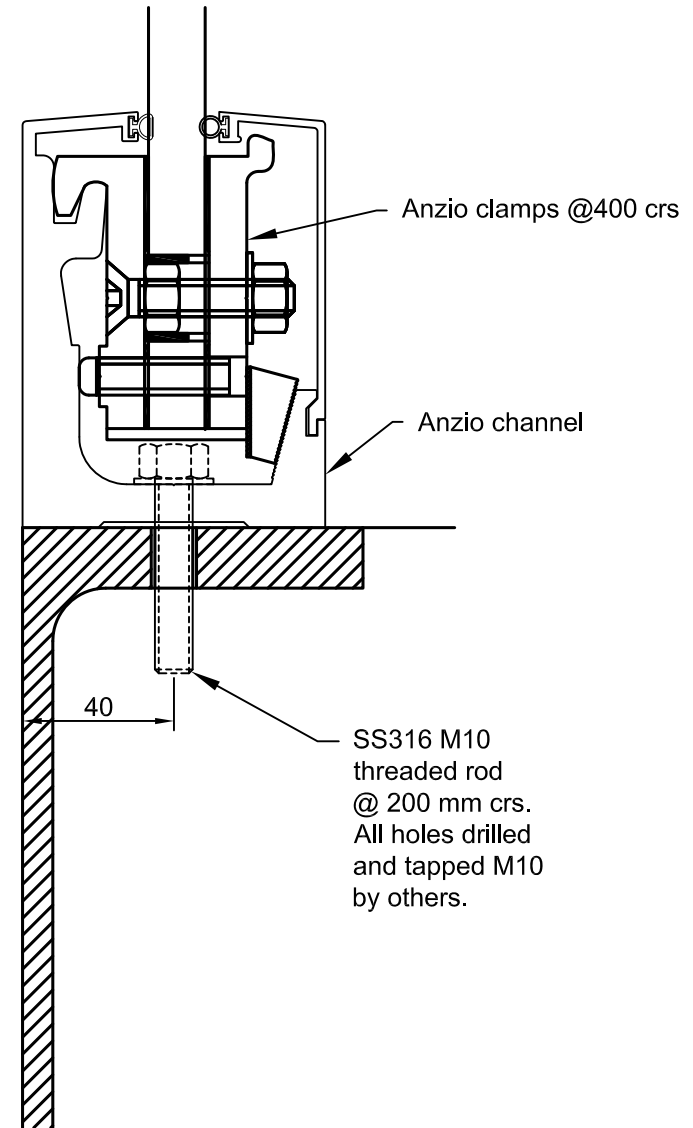
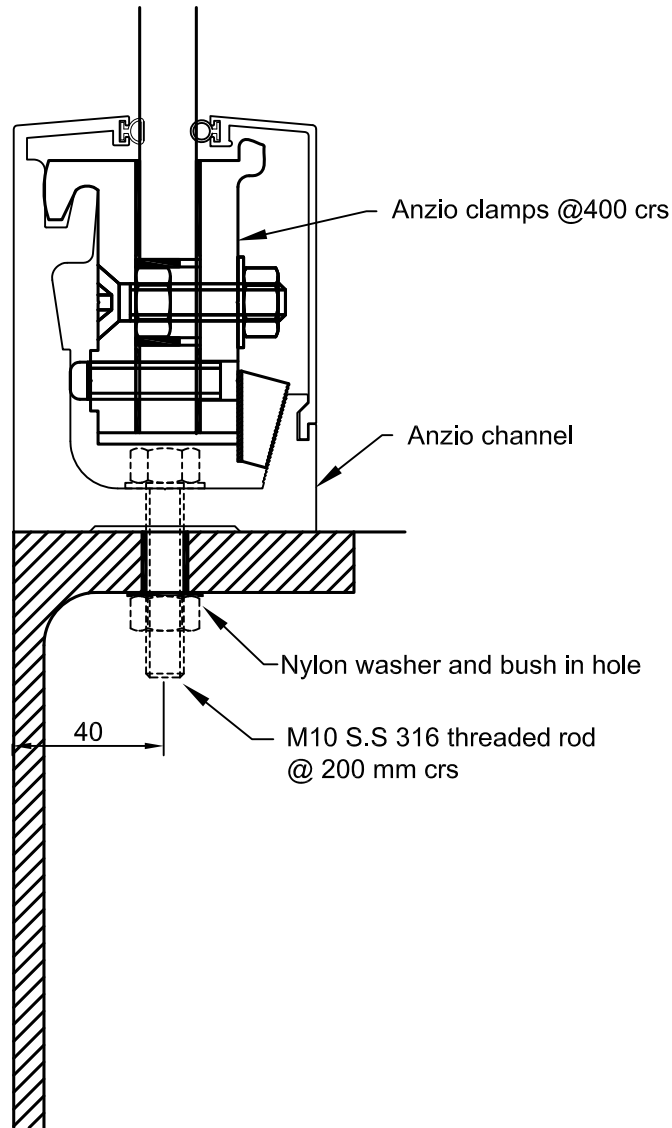
4. A handrail of 32-50mm diameter is required for stairs and ramps exceeding 1:20 slope. Fit handrail between 900mm and 1000mm above the pitchline. Refer NZBC D1/AS1.

5. The distance between the base fixing and the end of the channel or a joint must not exceed 200mm.





CONCRETE



FOR INTERNAL INSTALLATION ONLY