

MORITZ

self-closing door patch

SELF-CLOSING simplicity



Introducing the **MORITZ** self-closing patch fitting for internal frameless glass doors. Compact and slim, it represents the latest refinement in floor-mounted closing for doors.

The base of the MORITZ is mounted directly to either timber or concrete floors making installation simple and easy.

FEATURES

- A simple solution for both timber & concrete floors
- Direct floor mount removes the need for a floor box
- Quick and easy installation
- Can be used for single or double doors
- Double action for inwards & outwards door opening
- Multiple adjustments and settings for closing & breaking speed
- 5 year Warranty

TECHNICAL DETAIL

Fixing complies with following substrates:

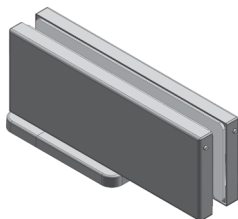
- Concrete • Steel • Timber
- Suits 8mm, 10mm or 12mm toughened safety glass
- Applicable for door width of 750mm to 1000mm and weight up to 100kg
- Used in conjunction with a standard top patch fitting

APPLICATIONS

Internal doors
Residential & Commercial use
For single or double doors

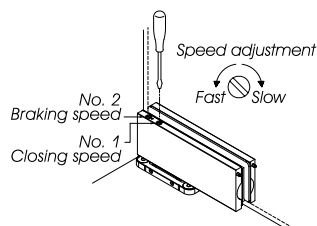
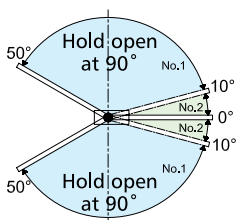
FINISHES

Polished stainless steel
Satin stainless steel
Custom powdercoat colour



Max. opening angle 150°
Hold open at 90° or option of 105°
Non-hold open, by request

Two speed adjustment:
Closing speed (150° down to 10°)
Breaking speed (10° down to 0°)



CALL 09 624 1180