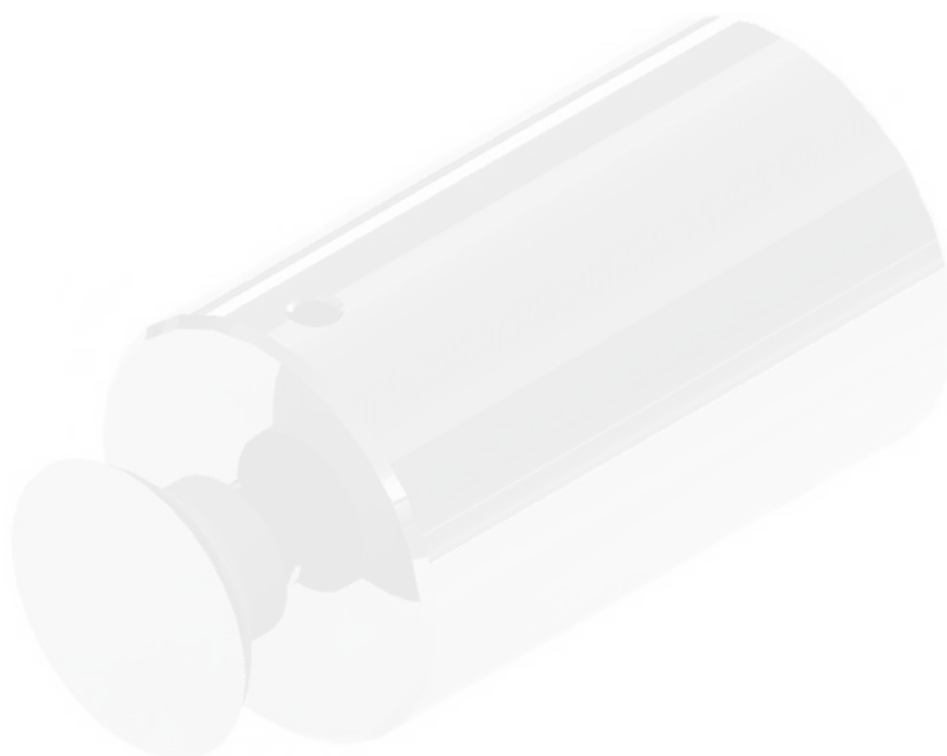


BUTTONS AND SPACERS G2

COUNTERSUNK BUSHES AND SPACERS G3

COVERED COUNTERSUNK BUSHES AND
SPACERS G4



N.B. ALL BUSHES & BUTTONS ARE MANUFACTURED STANDARD IN 304 GRADE STAINLESS STEEL, FOR EXTERNAL APPLICATIONS WE RECOMMEND SPECIFYING 316 GRADE STAINLESS STEEL WITH AN OPTION OF ELECTROPLATED FINISH.

B32M10 Button

AVAILABLE FINISHES

- Polished stainless steel
- Satin stainless steel

TECHNICAL DETAILS

- Manufactured in 304 grade stainless steel, lead time applies for all 316 grade
- 32mm diameter with a M10 thread
- Select fixing separately



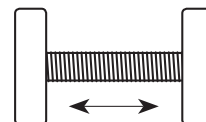
BB32M10 Double Button

AVAILABLE FINISHES

- Polished stainless steel
- Satin stainless steel

TECHNICAL DETAILS

- Manufactured in 304 grade stainless steel, lead time applies for all 316 grade
- 32mm diameter with a M10 thread



Please specify thickness required

BSOM619/BSOM625/BSOM632 Button head

AVAILABLE FINISHES

- Polished stainless steel
- Satin stainless steel

TECHNICAL DETAILS

- Manufactured in 304 grade stainless steel
- 19/25mm diameter, m6
- Spacers: 10/20/30/50mm
- Custom spacers available
- Select fixing separately
- M6



BSOM1032 Button head

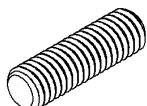
AVAILABLE FINISHES

- Polished stainless steel
- Satin stainless steel

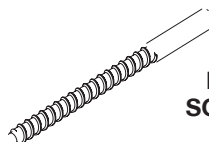
TECHNICAL DETAILS

- Manufactured in 304 grade stainless steel
- 32mm diameter
- Spacers: 20/30/50mm
- Custom spacers available
- Select fixing separately
- M10

FIXING included is a choice of THREADED ROD or WOOD FIX LAG SCREW



**THREADED
ROD**



**LAG
SCREW**

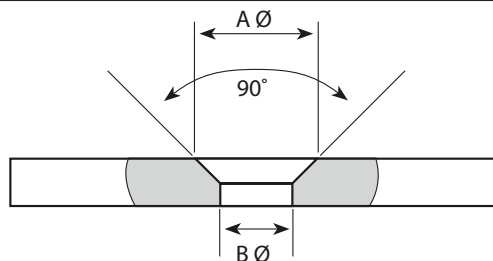
CBM6/CBM8/CBM10/CBM12 Countersunk bush

AVAILABLE FINISHES

- Polished stainless steel
- Satin stainless steel

TECHNICAL DETAILS

- Black acetyl bush
- Sizes as below



Glass hole preparation

CBM6SO19 Button with countersunk bush

AVAILABLE FINISHES

- Polished stainless steel
- Satin stainless steel

TECHNICAL DETAILS

- Manufactured in 304 grade stainless steel
- 19mm diameter
- Spacers: 10/20/30/50mm
- Custom spacers available
- Select fixing separately (see below)
- M6

A diameter = 18mm
B diameter = 10mm

CBM8SO25 Button with countersunk bush

AVAILABLE FINISHES

- Polished stainless steel
- Satin stainless steel

TECHNICAL DETAILS

- Manufactured in 304 grade stainless steel
- 25mm diameter
- Spacers: 10/20/30/50mm
- Custom spacers available
- Select fixing separately (see below)
- M8

A diameter = 20mm
B diameter = 12mm

CBM10SO32 Button with countersunk bush

AVAILABLE FINISHES

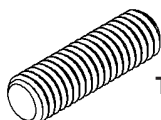
- Polished stainless steel
- Satin stainless steel

TECHNICAL DETAILS

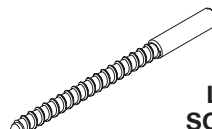
- Manufactured in 304 grade stainless steel
- 32mm diameter
- Spacers: 10/20/30/50mm
- Custom spacers available
- Select fixing separately (see below)
- M10

A diameter = 24mm
B diameter = 16mm

FIXING included is a choice of THREADED ROD or WOOD FIX LAG SCREW



THREADED
ROD



LAG
SCREW

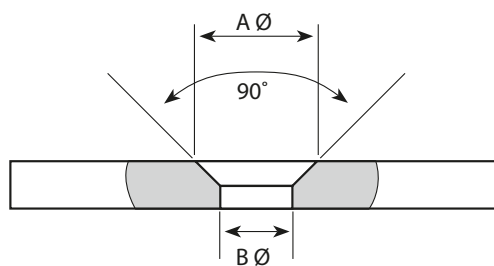
CCBM6/CCBM10 Covered countersunk bush

AVAILABLE FINISHES

- Polished stainless steel
- Satin stainless steel

TECHNICAL DETAILS

- Cap manufactured in 304 grade stainless steel
- Includes s/steel cap and black acetyl bush
- Sizes as below



Glass hole preparation

CCBM6SO19 Button with covered countersunk bush

AVAILABLE FINISHES

- Polished stainless steel
- Satin stainless steel

TECHNICAL DETAILS

- Manufactured in 304 grade stainless steel
- 19mm diameter
- Spacers: 20mm or 50mm
- Custom spacers available
- Supplied with; (other fixings available upon request)
lag screw fixing M6x50mm
or;
threaded rod fixing M6x60mm

A diameter = 22mm

B diameter = 10mm

CCBM10SO32 Button with covered countersunk bush

AVAILABLE FINISHES

- Polished stainless steel
- Satin stainless steel

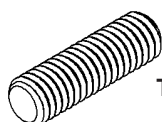
TECHNICAL DETAILS

- Manufactured in 304 grade stainless steel
- 32mm diameter
- Spacers: 20mm or 50mm
- Custom spacers available
- Supplied with; (other fixings available upon request)
lag screw fixing M10x100mm
or threaded rod fixing M10x110mm

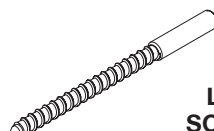
A diameter = 30mm

B diameter = 18mm

FIXING included is a choice of **THREADED ROD** or **WOOD FIX LAG SCREW**



**THREADED
ROD**



**LAG
SCREW**