

ASPEN CANOPY	F2
ASPEN HEAVY WEIGHT CANOPY	F3
CX SPYDER FITTINGS	F4 - F7
C SPYDER FITTINGS, with Covered Rotule	F8 - F11
FNZCX SPYDER FITTINGS	F12 - F17
FIN SHOES	F18 - F19
FIN BRACKETS	F20 - F21



**CANTIE/CANWAN**

**AVAILABLE FINISH**

- Polished stainless steel

**TECHNICAL DETAILS**

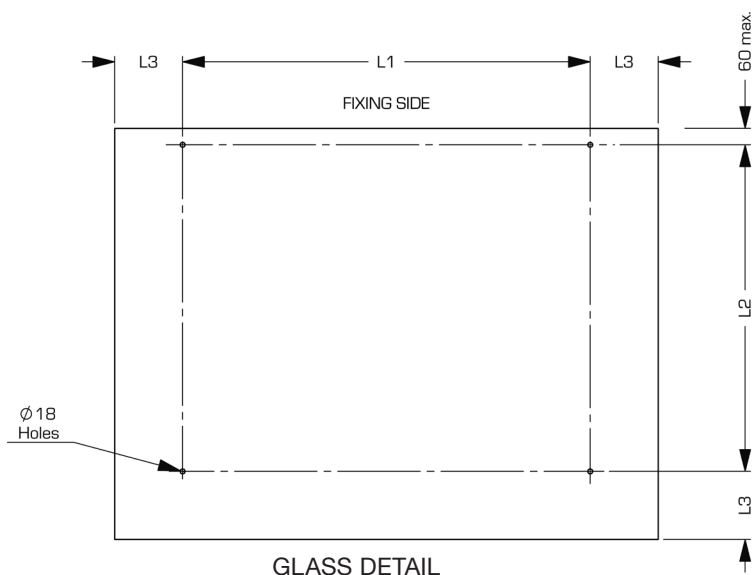
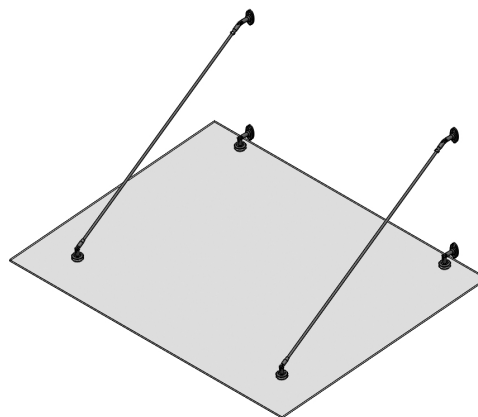
316 marine grade stainless steel

Suitable for 10 and 12mm glass

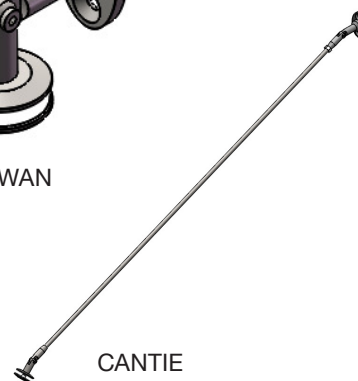
PS1 available on request

Wall fixings provided separately

Technical details and glass layouts available upon request



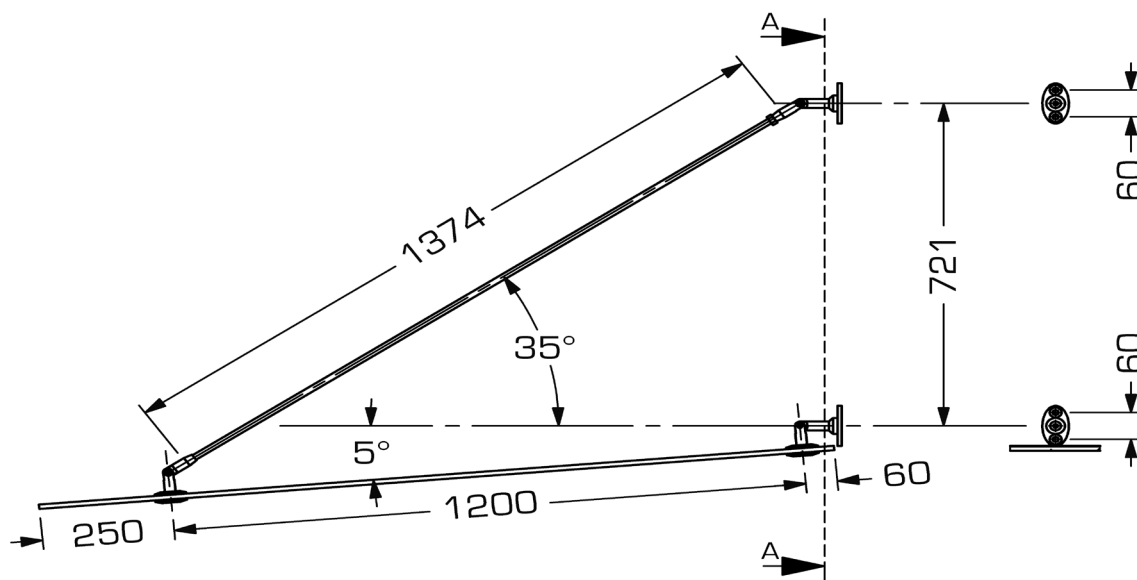
CANWAN



CANTIE

Glass Thickness		Maximum Dimensions		
Tempered	Laminated	L1	L2	L3
10mm	11.5	1500	1200	250
12mm	13.5	1700	1200	300

Maximum wind pressure 1.76kPa (very high wind zone)  
 Maximum Snow Load 1kPa



CANOPY SIDEVIEW

**CANTIE/CANWAN**  
 HEAVYWEIGHT

**AVAILABLE FINISH**

- Polished stainless steel

**TECHNICAL DETAILS**

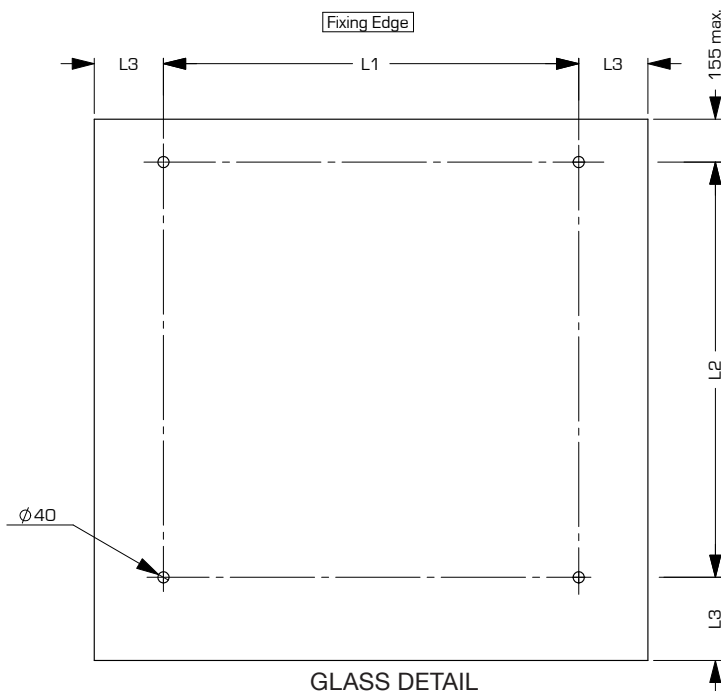
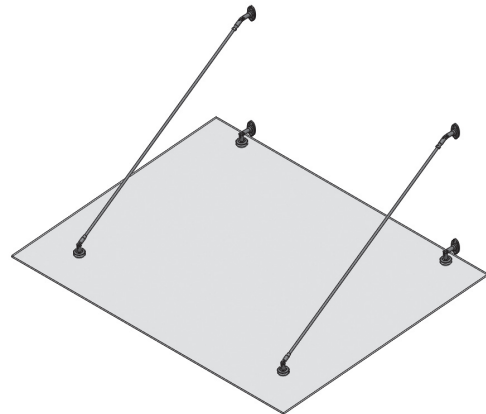
316 marine grade stainless steel

Suitable for 15mm toughened glass or 17.5mm toughened laminate

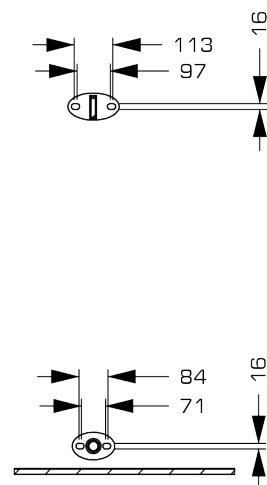
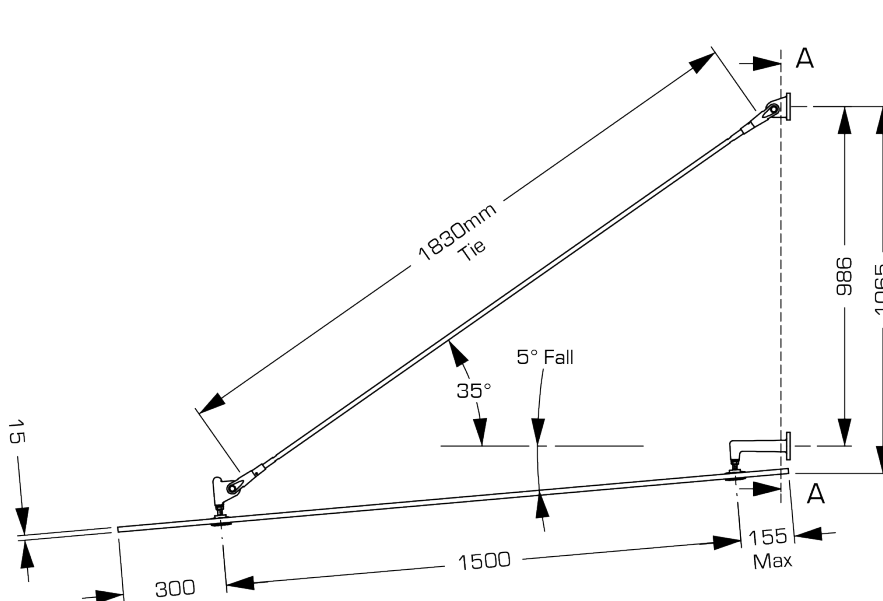
PS1 available on request

Wall fixings provided separately

Technical details and glass layouts available upon request



Glass Thickness (mm)		Maximum Dimensions (mm)		
Toughened	Laminated	L1	L2	L3
15	17.5	2000	1500	300



CANOPY SIDEVIEW

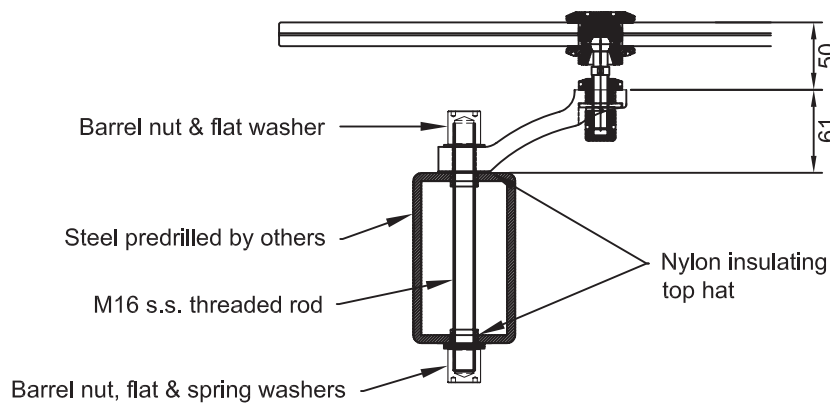
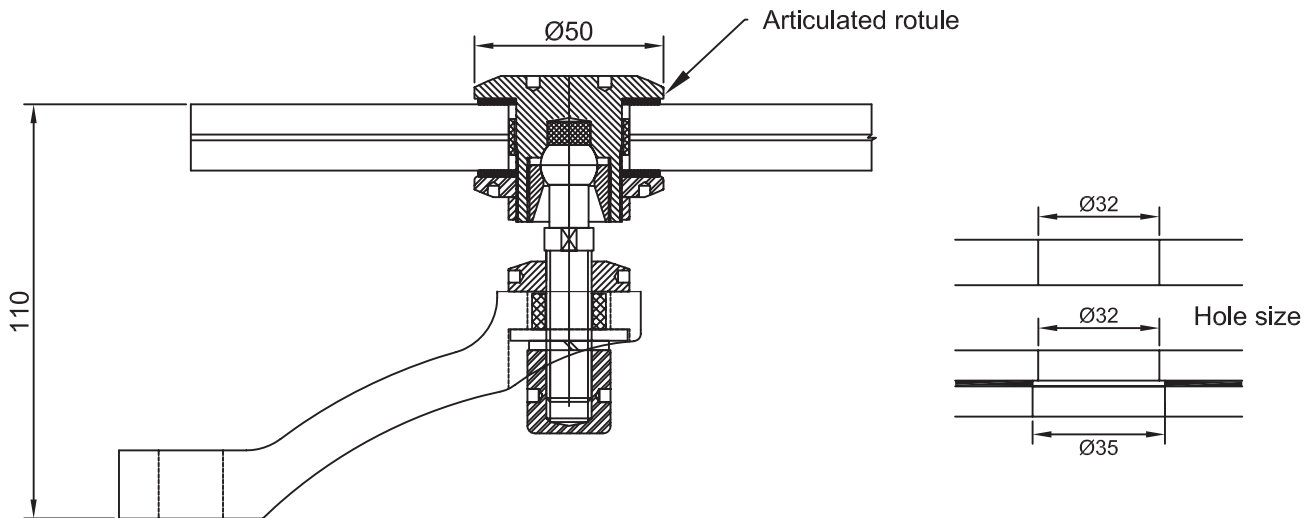
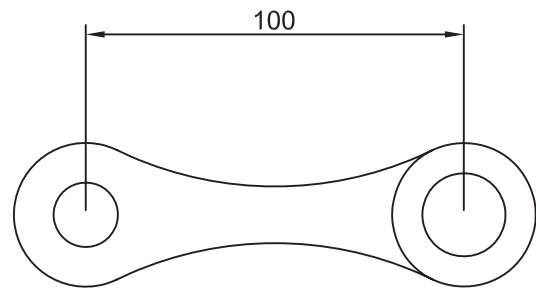
**SPYDER CX1 One way spyder fitting - hole fixed**

**AVAILABLE FINISHES**

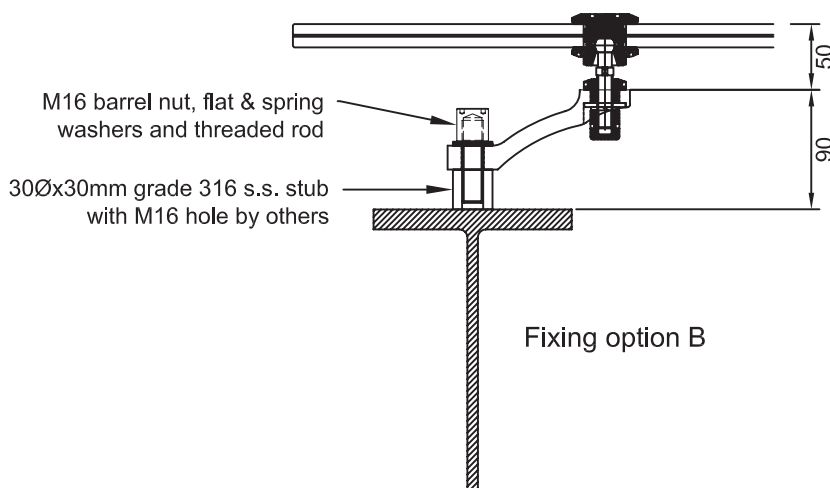
- Satin stainless steel
- Polished stainless steel (subject to price and leadtime)

**TECHNICAL DETAILS**

- 316 stainless steel
- Supplied with flat head articulated rotules
- CXFHABM12 articulated rotule takes 10mm to 17.5mm glass thicknesses
- Glass hole diameter 32mm (see detail below)
- N.B. fixings to the supporting structure are project specific and are supplied as an extra



Fixing option A



Fixing option B

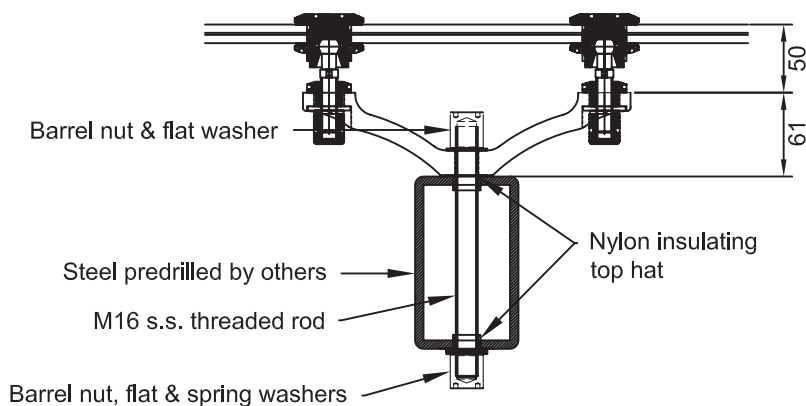
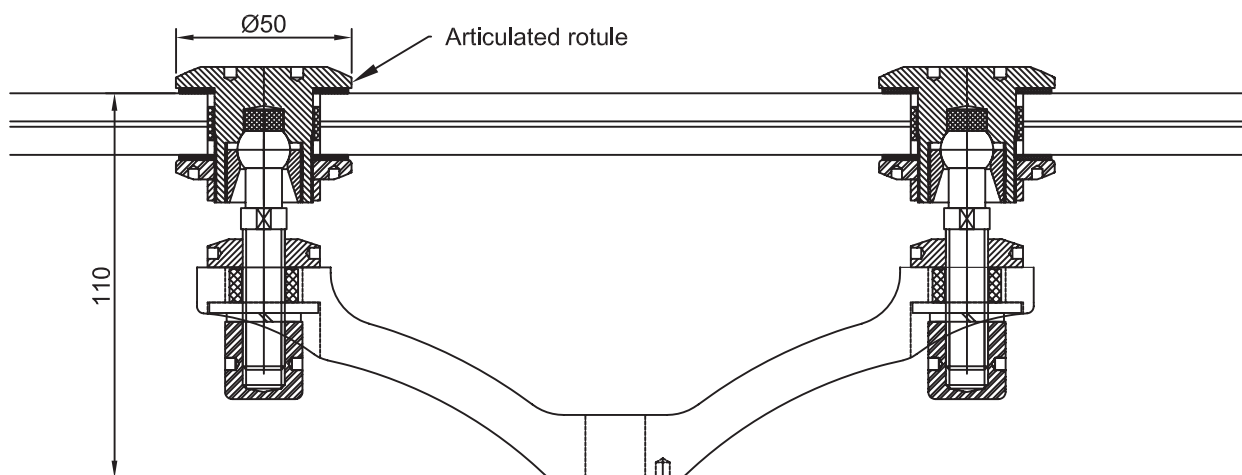
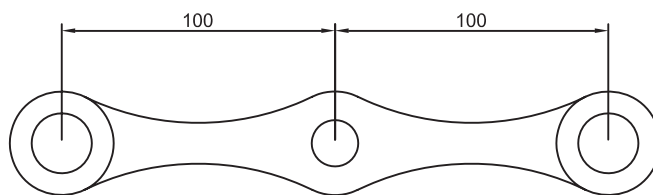
**SPYDER CX2 Two way 180° spyder fitting - hole fixed**

**AVAILABLE FINISHES**

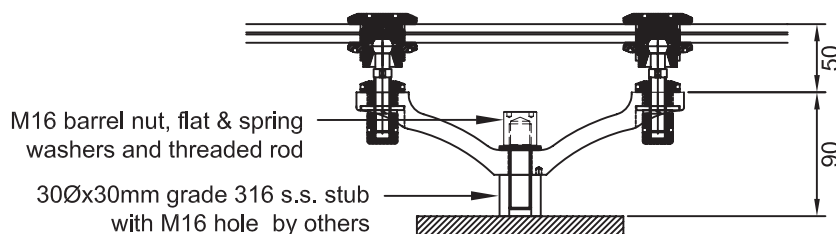
- Satin stainless steel
- Polished stainless steel (subject to price and leadtime)

**TECHNICAL DETAILS**

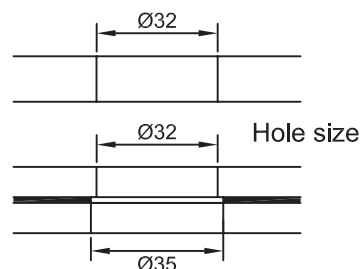
- 316 stainless steel
- Supplied with flat head articulated rotules
- CXFHABM12 articulated rotule takes 10mm to 17.5mm glass thicknesses
- Glass hole diameter 32mm (see detail below)
- N.B. fixings to the supporting structure are project specific and are supplied as a extra



Fixing option A



Fixing option B



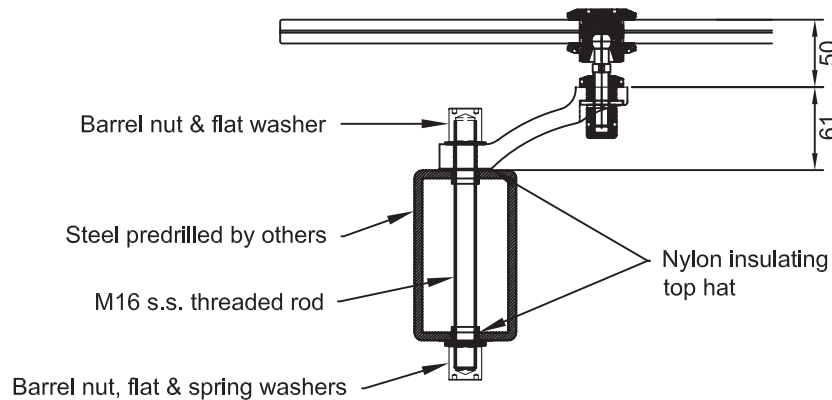
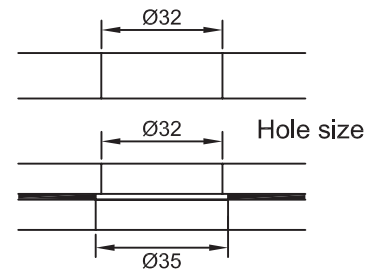
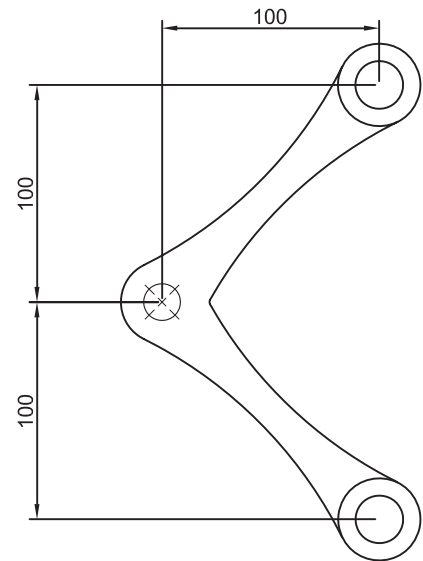
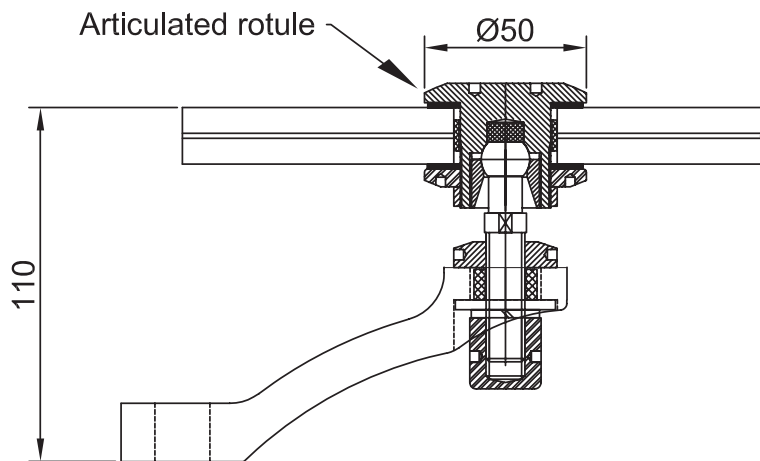
**SPYDER CX290 Two way 90° spyder fitting - hole fixed**

**AVAILABLE FINISHES**

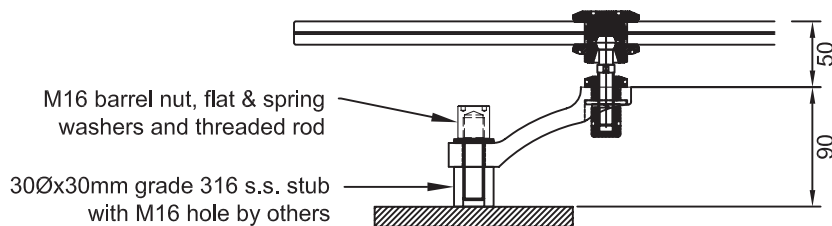
- Satin stainless steel
- Polished stainless steel (subject to price and leadtime)

**TECHNICAL DETAILS**

- 316 stainless steel
- Supplied with flat head articulated rotules
- CXFHABM12 articulated rotule takes 10mm to 17.5mm glass thicknesses
- Glass hole diameter 32mm (see detail below)
- N.B. fixings to the supporting structure are project specific and are supplied as a extra



Fixing option A



Fixing option B

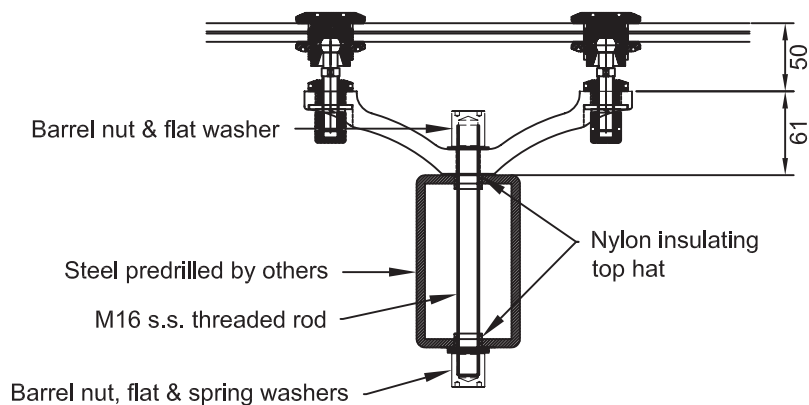
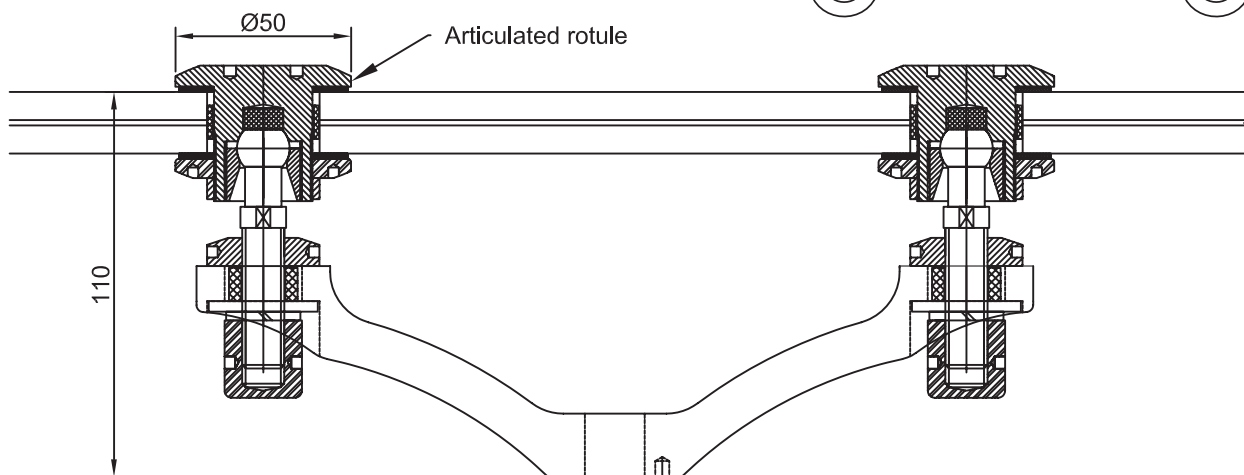
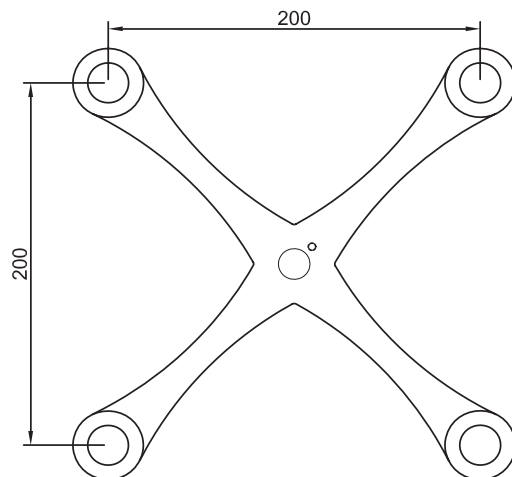
**SPYDER CX4** Four way spyder fitting - hole fixed

**AVAILABLE FINISHES**

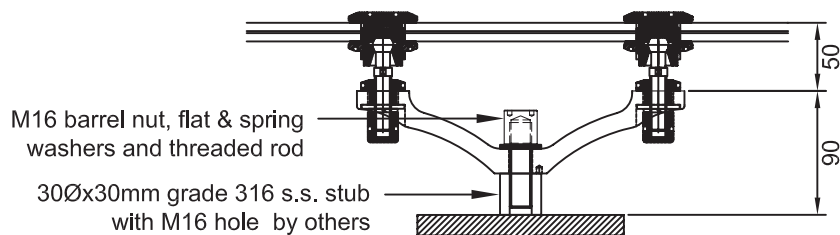
- Satin stainless steel
- Polished stainless steel (subject to price and leadtime)

**TECHNICAL DETAILS**

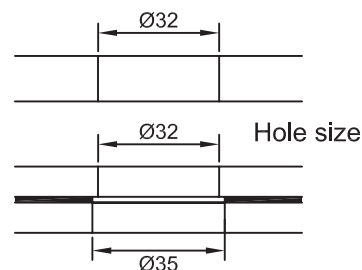
- 316 stainless steel
- Supplied with flat head articulated rotules
- CXFHABM12 articulated rotule takes 10mm to 17.5mm glass thicknesses
- Glass hole diameter 32mm (see detail below)
- N.B. fixings to the supporting structure are project specific and are supplied as a extra



Fixing option A



Fixing option B



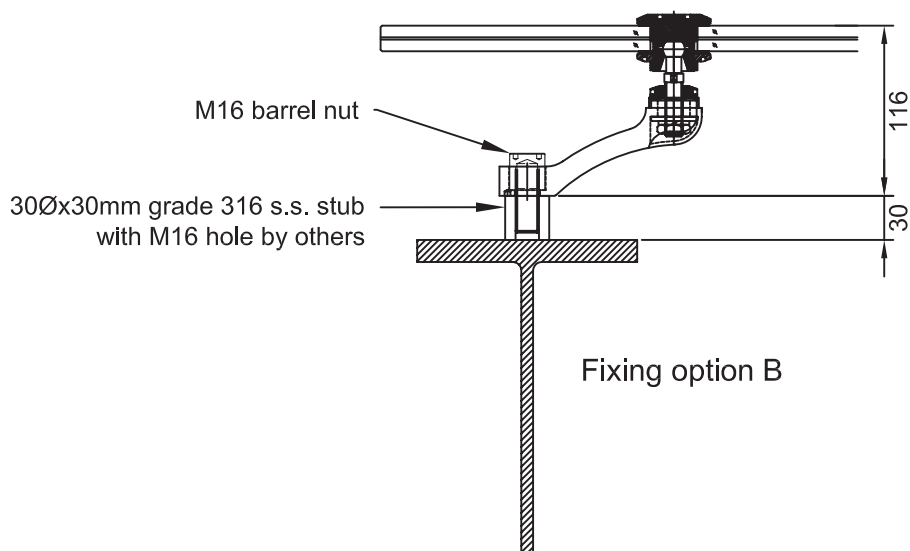
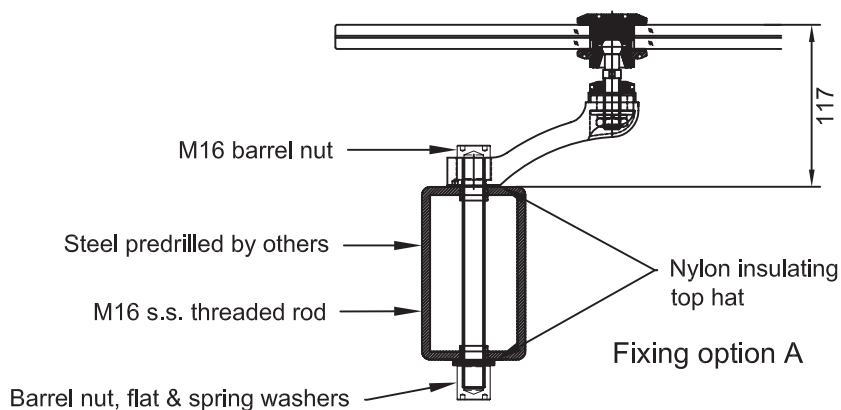
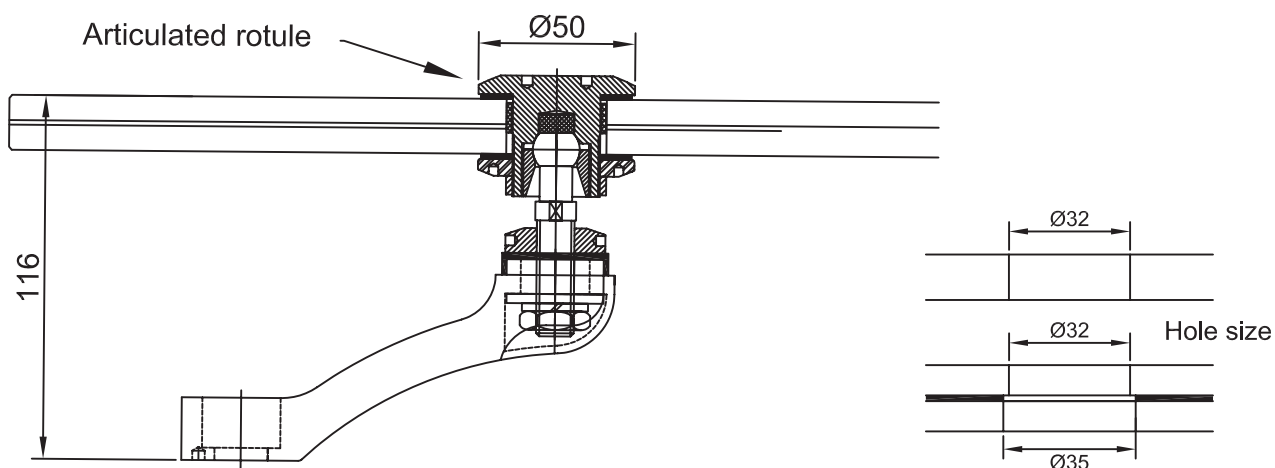
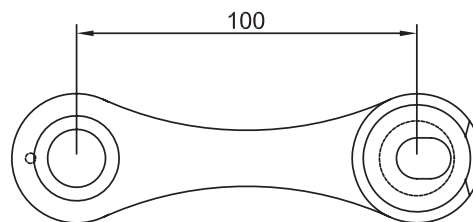
**SPYDER C1** One way spyder fitting with rotule cover cap - hole fixed

**AVAILABLE FINISHES**

- Polished stainless steel
- Satin stainless steel (subject to price and leadtime)

**TECHNICAL DETAILS**

- 316 stainless steel
- Supplied with flat head articulated rotules
- CFHABM12 articulated rotule takes 10mm to 17.5mm glass thicknesses
- Glass hole diameter 32mm (see detail below)
- N.B. fixings to the supporting structure are project specific and are supplied as a extra





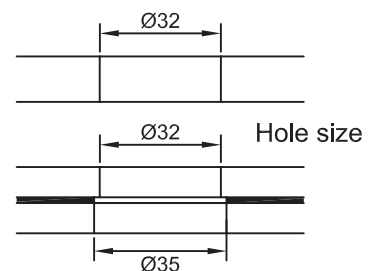
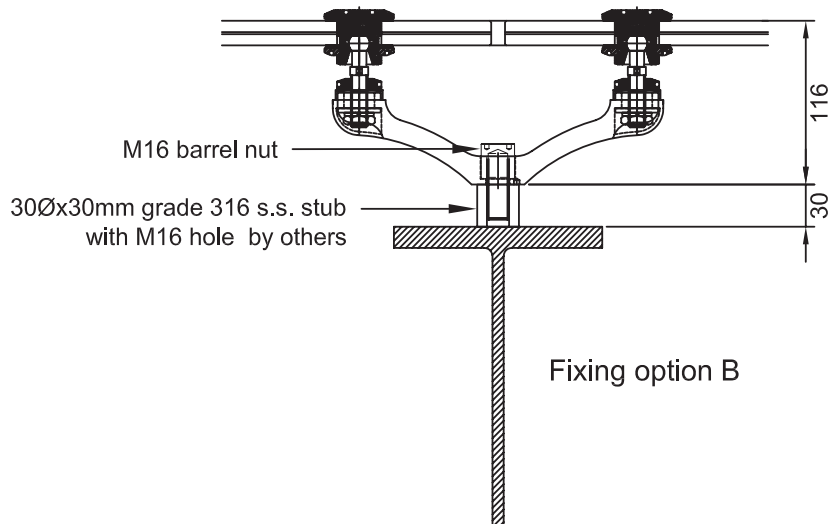
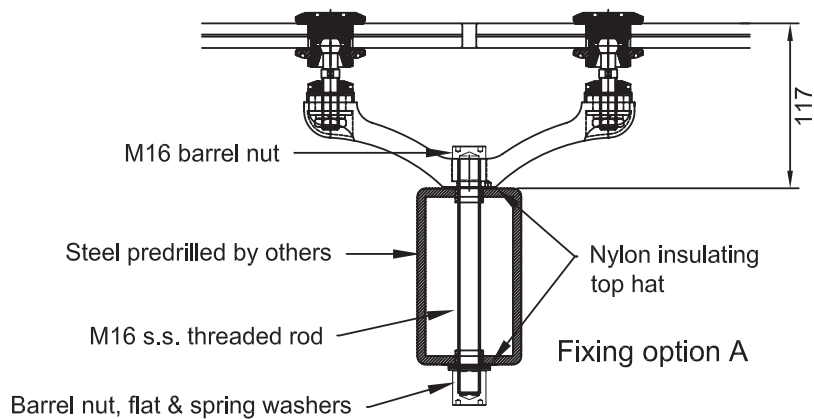
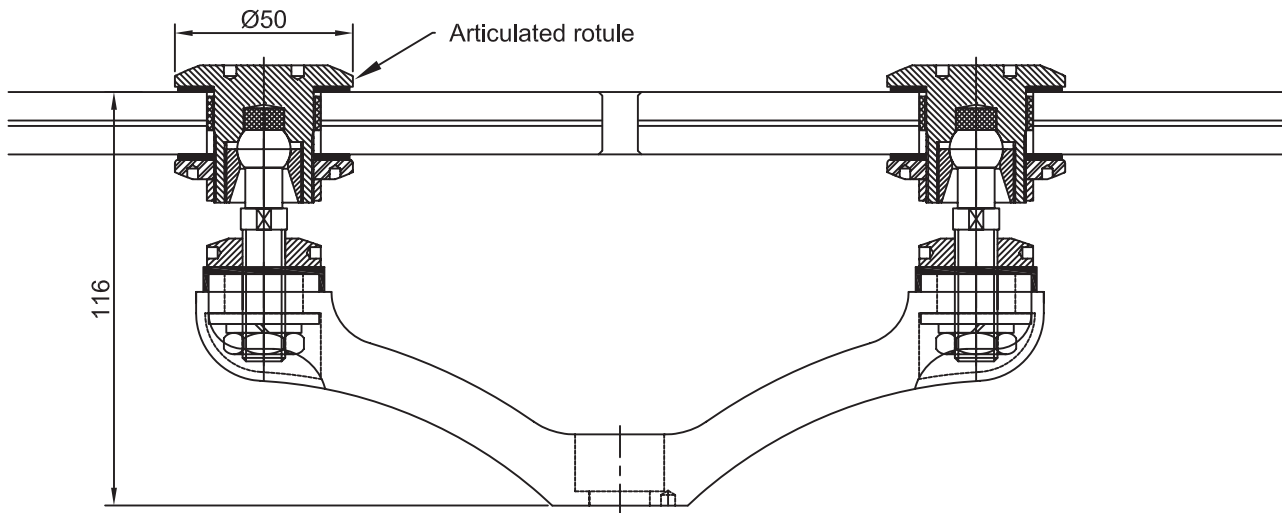
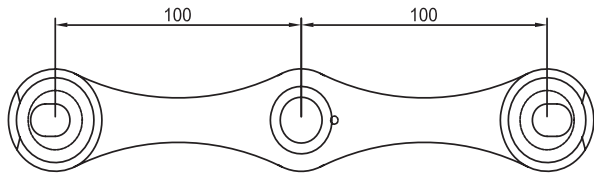
**SPYDER C2 Two way 180° spyder fitting with rotule cover cap - hole fixed**

**AVAILABLE FINISHES**

- Polished stainless steel
- Satin stainless steel (subject to price and leadtime)

**TECHNICAL DETAILS**

- 316 stainless steel
- Supplied with flat head articulated rotules
- CFHABM12 articulated rotule takes 10mm to 17.5mm glass thicknesses
- Glass hole diameter 32mm (see detail below)
- N.B. fixings to the supporting structure are project specific and are supplied as a extra



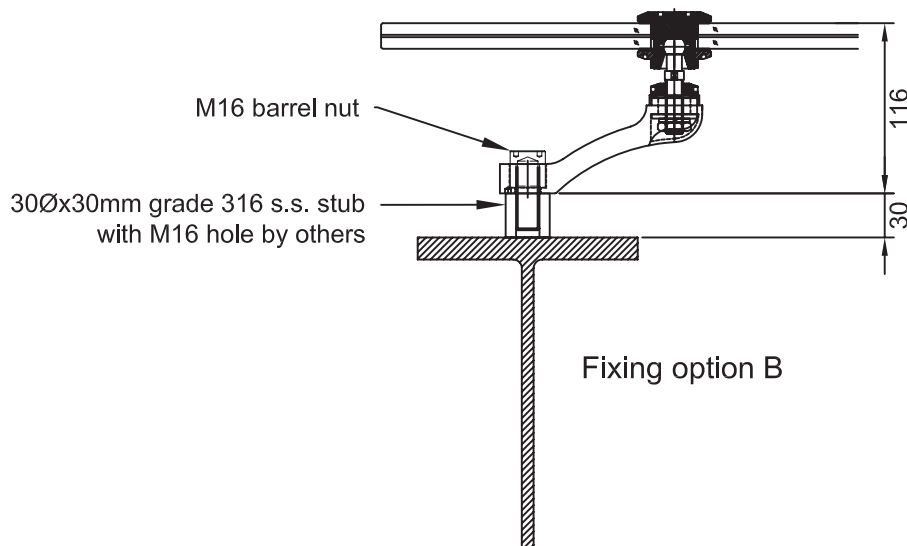
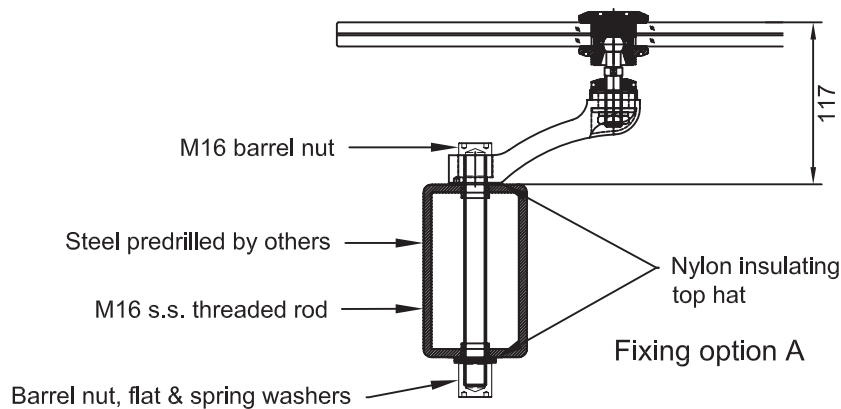
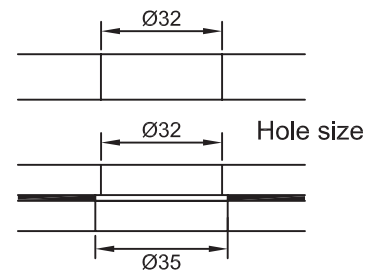
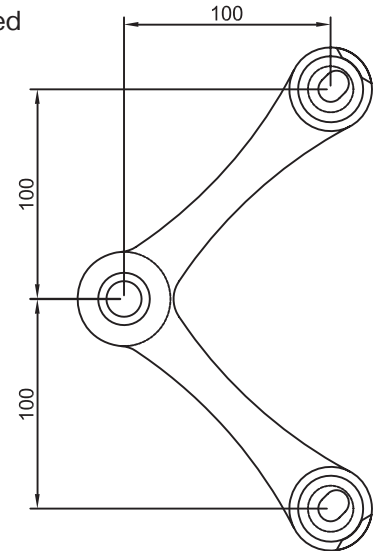
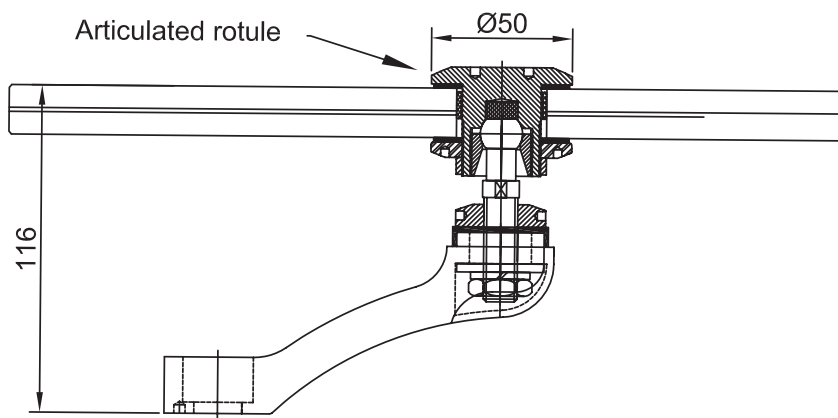
**SPYDER C290 Two way 90° spyder fitting with rotule cover cap - hole fixed**

**AVAILABLE FINISHES**

- Polished stainless steel
- Satin stainless steel (subject to price and leadtime)

**TECHNICAL DETAILS**

- 316 stainless steel
- Supplied with flat head articulated rotules
- CFHABM12 articulated rotule takes 10mm to 17.5mm glass thicknesses
- Glass hole diameter 32mm (see detail below)
- N.B. fixings to the supporting structure are project specific and are supplied as a extra



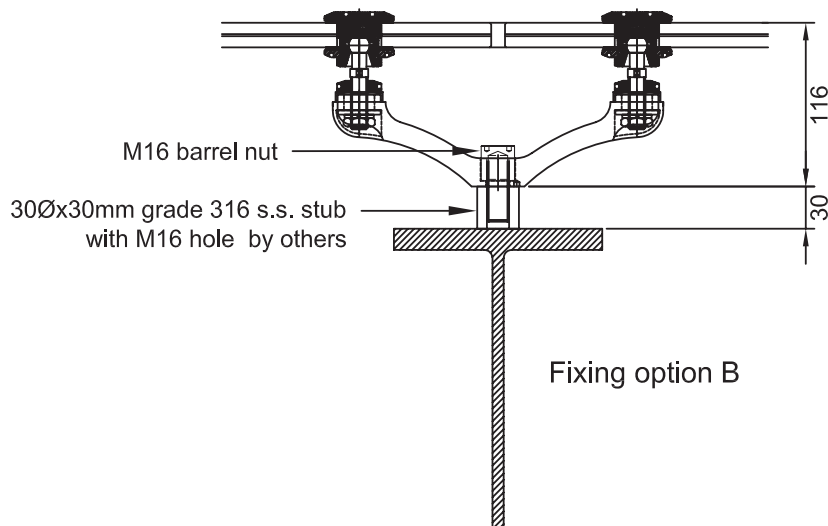
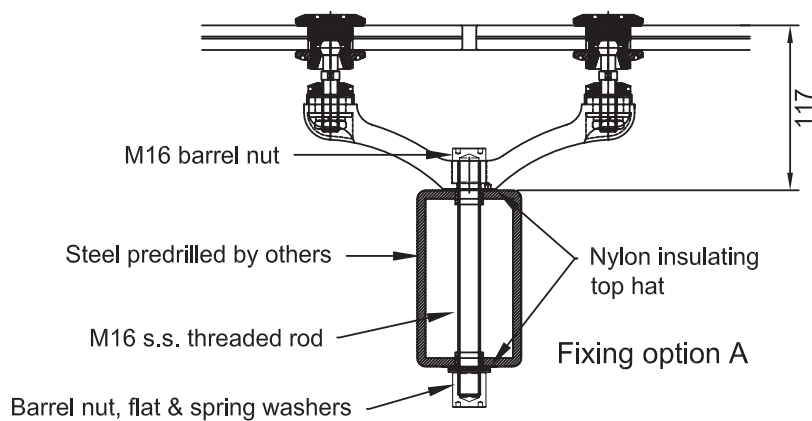
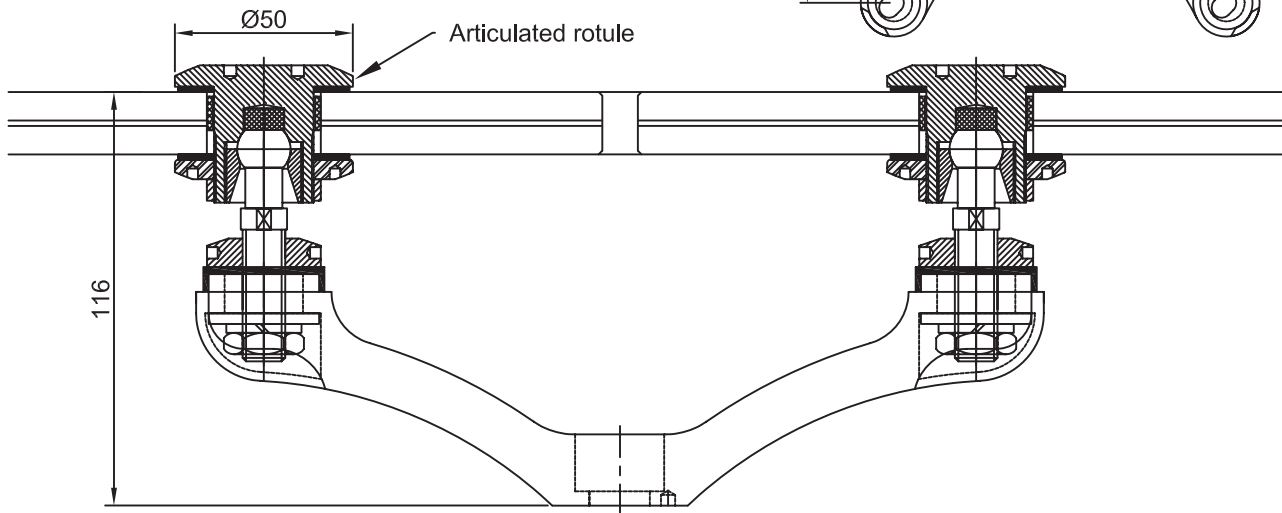
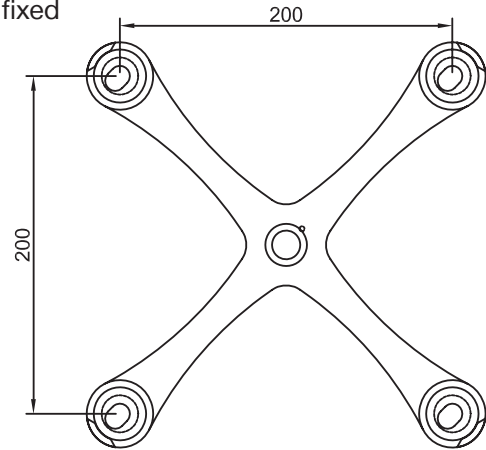
**SPYDER C4** Four way spyder fitting with rotule cover cap - hole fixed

**AVAILABLE FINISHES**

- Polished stainless steel
- Satin stainless steel (subject to price and leadtime)

**TECHNICAL DETAILS**

- 316 stainless steel
- Supplied with flat head articulated rotules
- CFHABM12 articulated rotule takes 10mm to 17.5mm glass thicknesses
- Glass hole diameter 32mm (see detail below)
- N.B. fixings to the supporting structure are project specific and are supplied as a extra



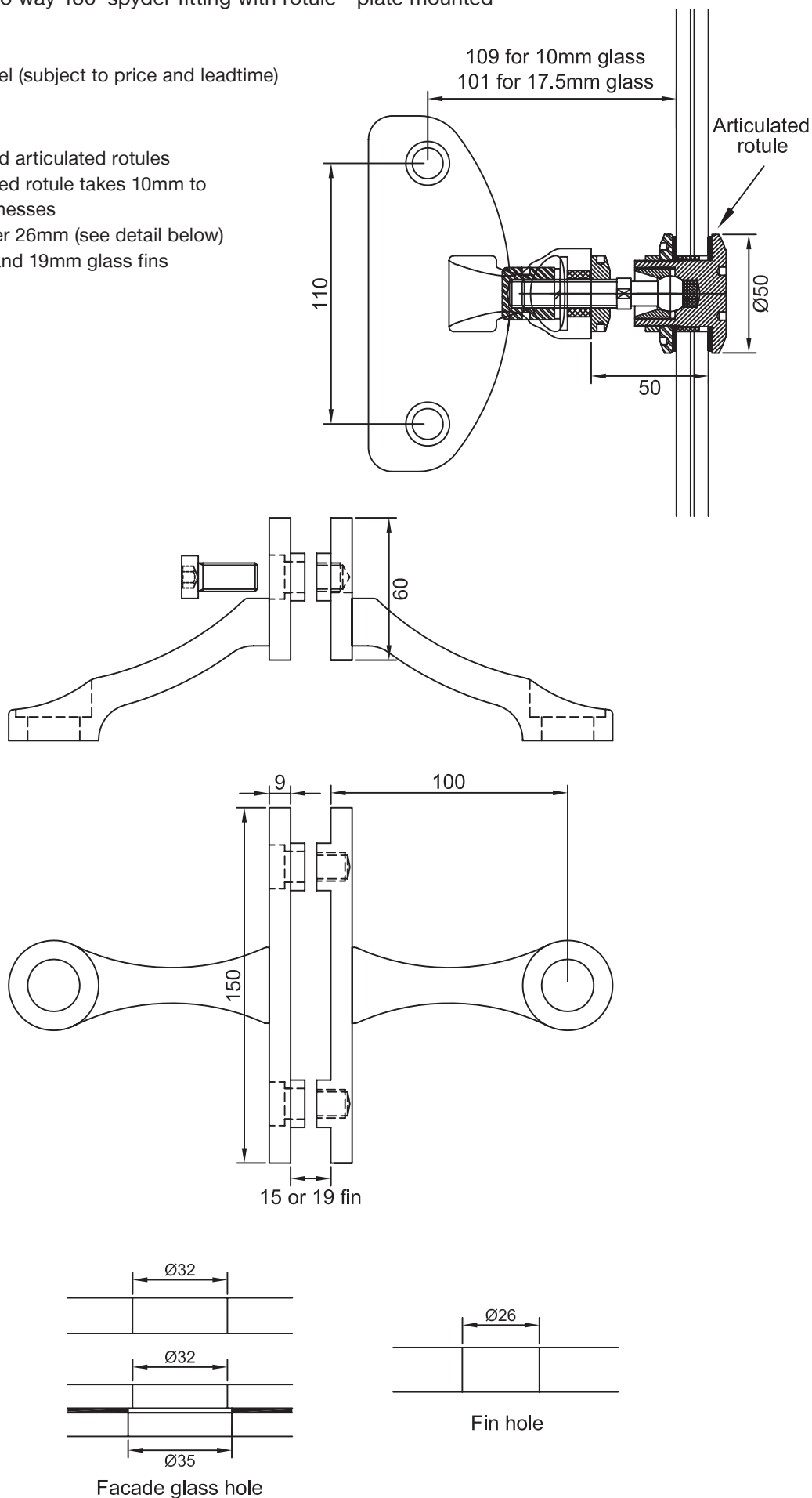
**SPYDER FNZCX1 Two way 180° spyder fitting with rotule - plate mounted**

**AVAILABLE FINISHES**

- Satin stainless steel
- Polished stainless steel (subject to price and leadtime)

**TECHNICAL DETAILS**

- 316 stainless steel
- Supplied with flat head articulated rotules
- CXFHABM12 articulated rotule takes 10mm to 17.5mm glass thicknesses
- Glass fin hole diameter 26mm (see detail below)
- Spyder fits to 15mm and 19mm glass fins



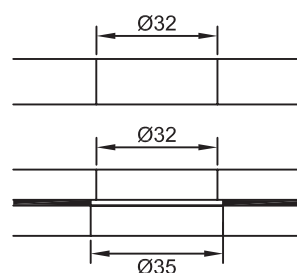
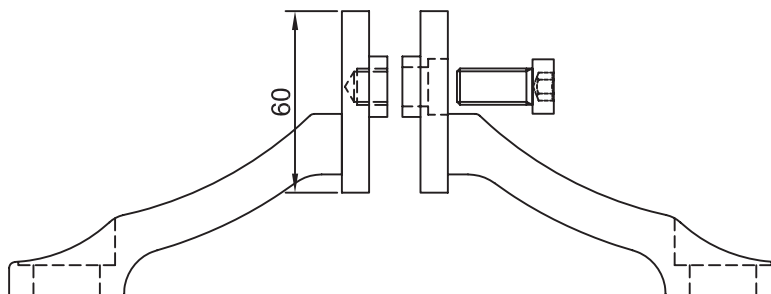
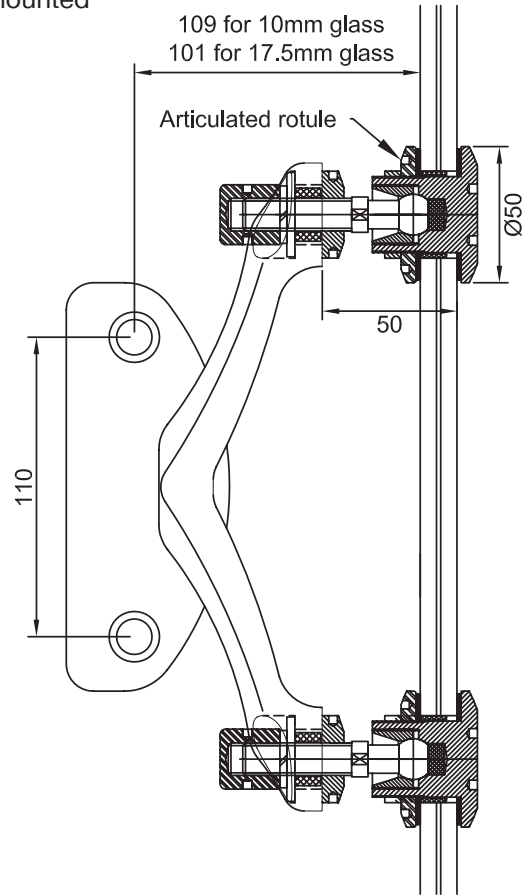
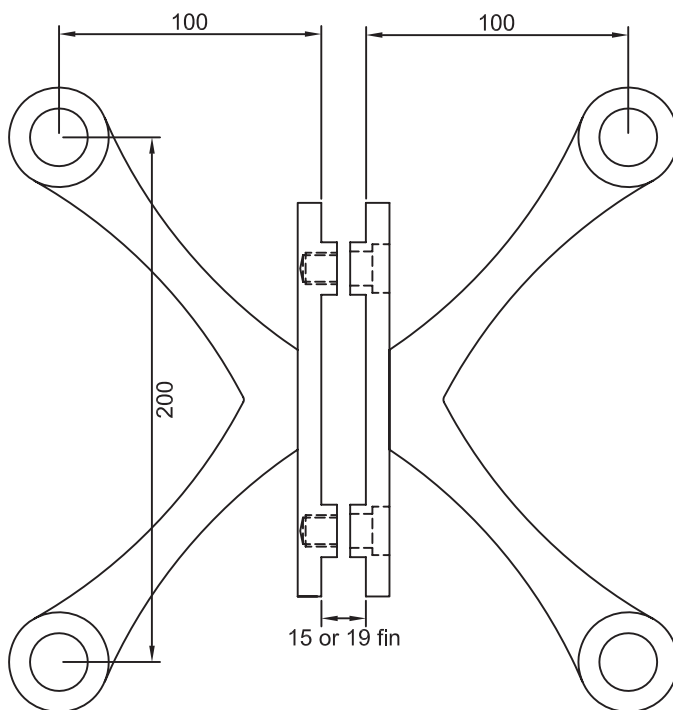
**SPYDER FNZCX2** Four way spyder fitting with rotule - plate mounted

**AVAILABLE FINISHES**

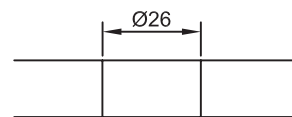
- Satin stainless steel
- Polished stainless steel (subject to price and leadtime)

**TECHNICAL DETAILS**

- 316 stainless steel
- Supplied with flat head articulated rotules
- CXFHABM12 articulated rotule takes 10mm to 17.5mm glass thicknesses
- Glass fin hole diameter 26mm (see detail below)
- Spyder fits to 15mm and 19mm glass fins



Facade glass hole



Fin hole

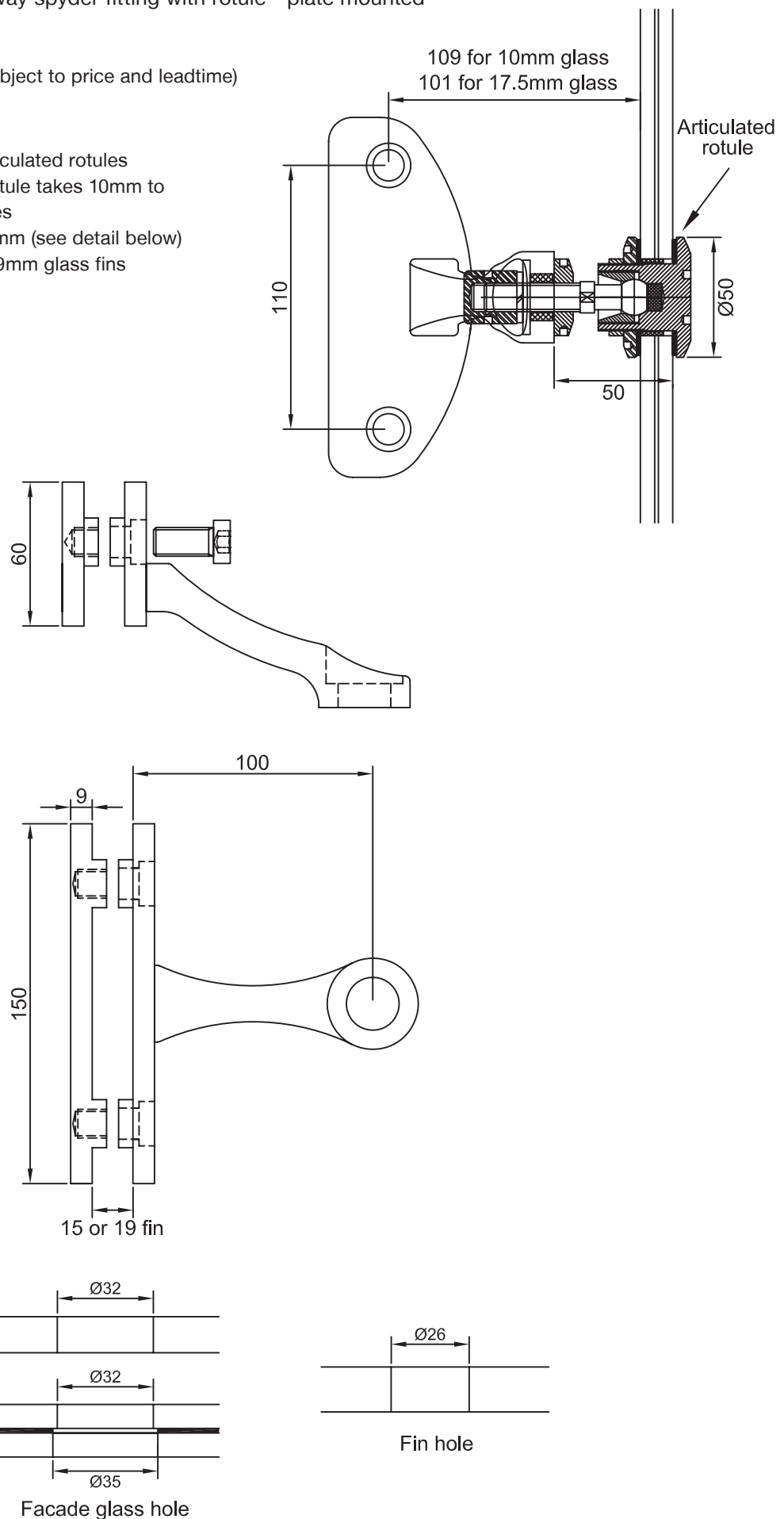
**SPYDER FNZCX1G** One way spyder fitting with rotule - plate mounted

**AVAILABLE FINISHES**

- Satin stainless steel
- Polished stainless steel (subject to price and leadtime)

**TECHNICAL DETAILS**

- 316 stainless steel
- Supplied with flat head articulated rotules
- CXFHABM12 articulated rotule takes 10mm to 17.5mm glass thicknesses
- Glass fin hole diameter 26mm (see detail below)
- Spyder fits to 15mm and 19mm glass fins



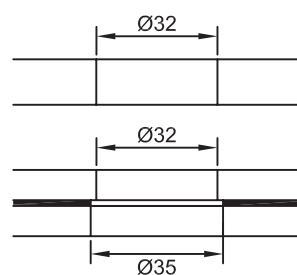
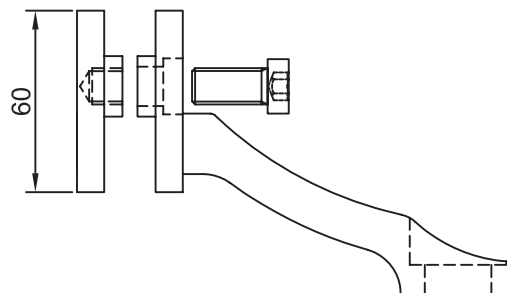
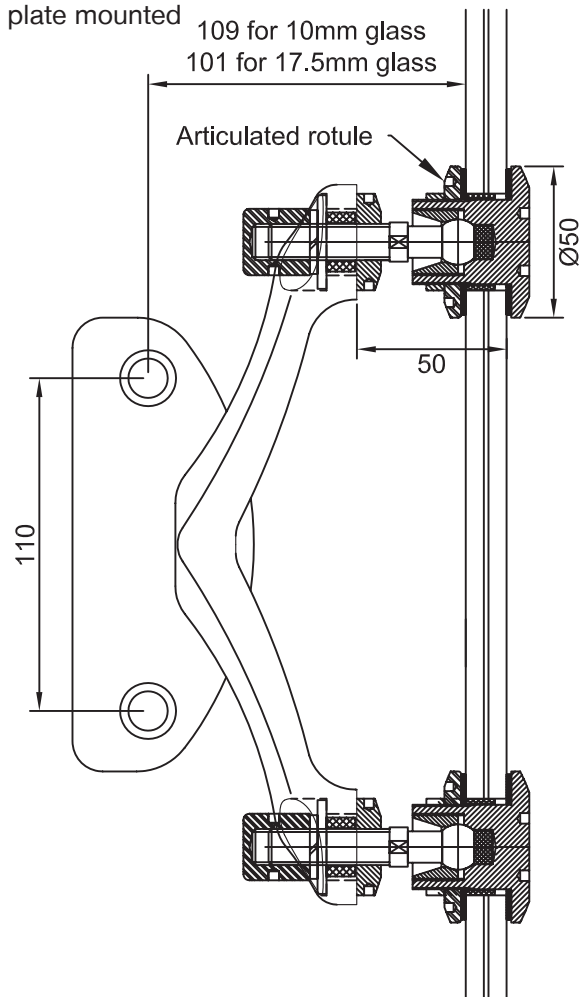
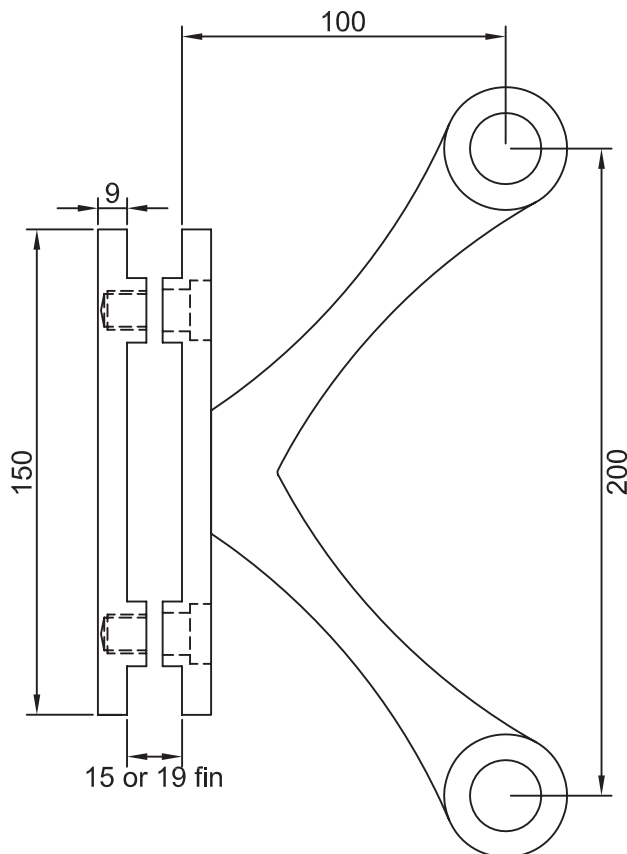
**SPYDER FNZCX2G Two way 90° spyder fitting with rotule - plate mounted**

**AVAILABLE FINISHES**

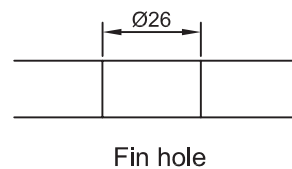
- Satin stainless steel
- Polished stainless steel (subject to price and leadtime)

**TECHNICAL DETAILS**

- 316 stainless steel
- Supplied with flat head articulated rotules
- CXFHABM12 articulated rotule takes 10mm to 17.5mm glass thicknesses
- Glass fin hole diameter 26mm (see detail below)
- Spyder fits to 15mm and 19mm glass fins



Facade glass hole



Fin hole

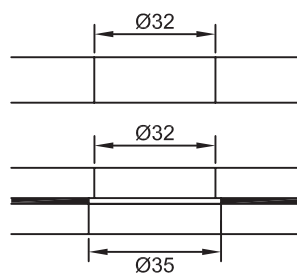
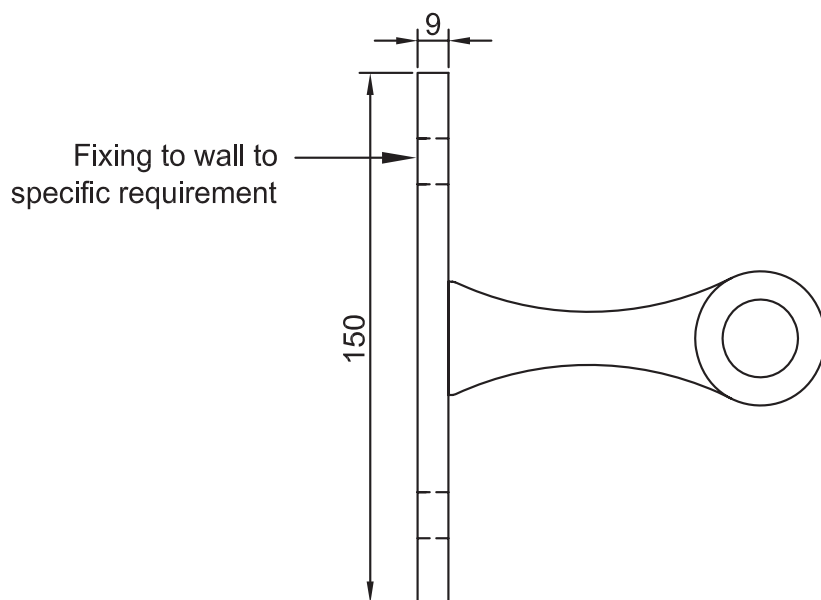
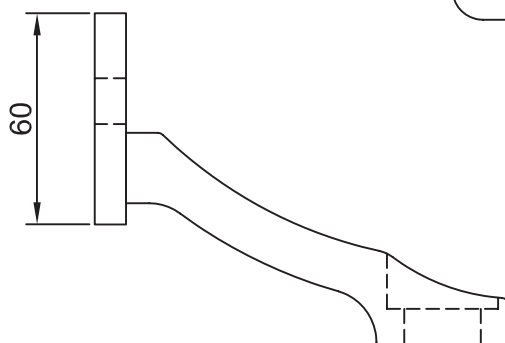
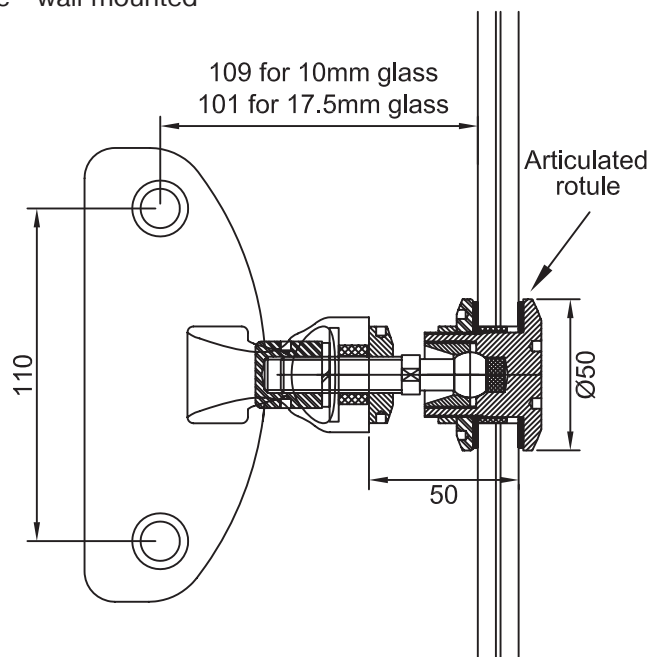
**SPYDER FNZCX1W** One way spyder fitting with rotule - wall mounted

**AVAILABLE FINISHES**

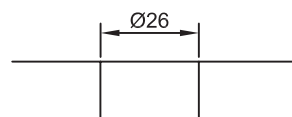
- Satin stainless steel
- Polished stainless steel (subject to price and leadtime)

**TECHNICAL DETAILS**

- 316 stainless steel
- Supplied with flat head articulated rotules
- CXFHABM12 articulated rotule takes 10mm to 17.5mm glass thicknesses
- Glass fin hole diameter 26mm (see detail below)
- Spyder fits to 15mm and 19mm glass fins



Facade glass hole



Fin hole



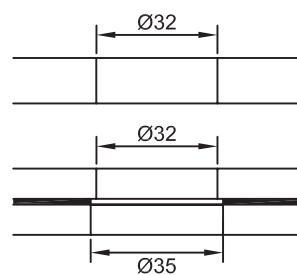
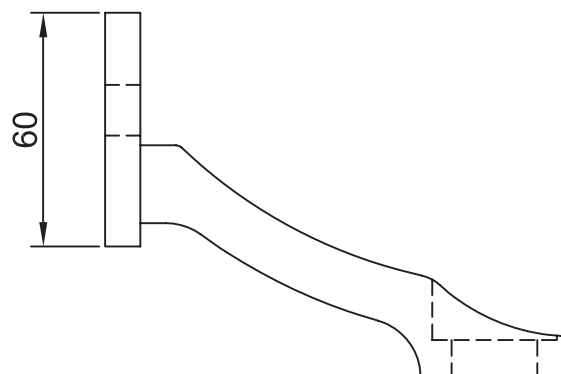
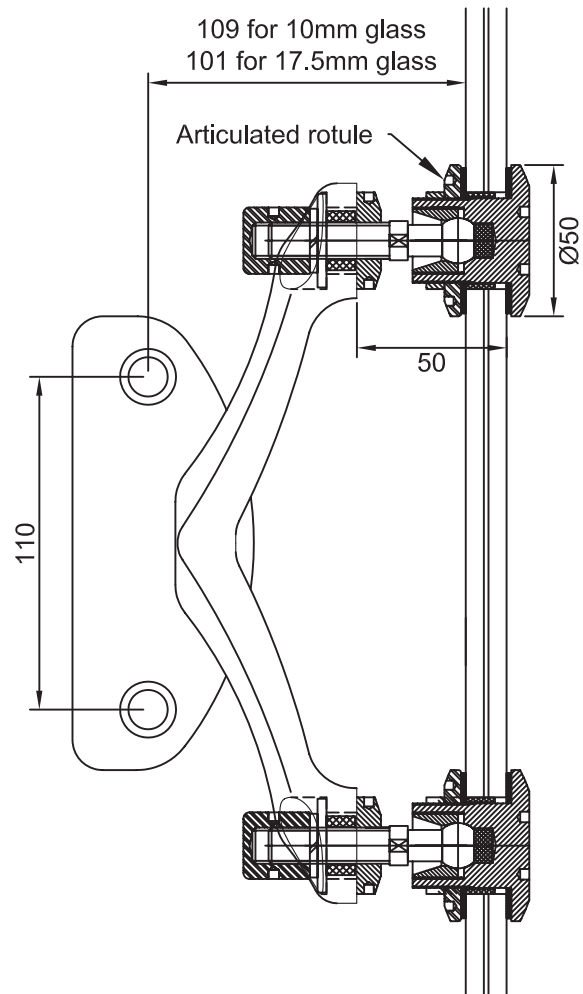
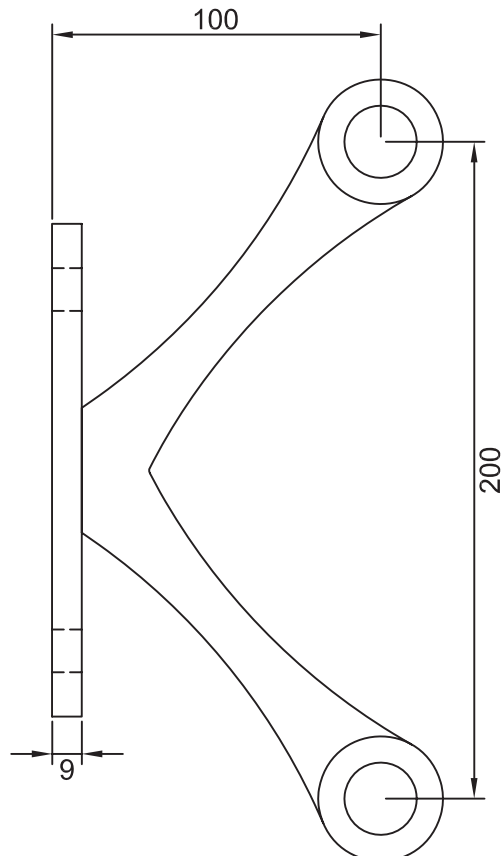
**SPYDER FNZCX2W** Two way 90° spyder fitting with rotule - wall mounted

**AVAILABLE FINISHES**

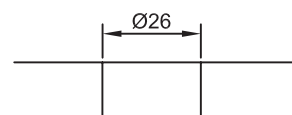
- Satin stainless steel
- Polished stainless steel (subject to price and leadtime)

**TECHNICAL DETAILS**

- 316 stainless steel
- Supplied with flat head articulated rotules
- CXFHABM12 articulated rotule takes 10mm to 17.5mm glass thicknesses
- Glass fin hole diameter 26mm (see detail below)
- Spyder fits to 15mm and 19mm glass fins



Facade glass hole



Fin hole

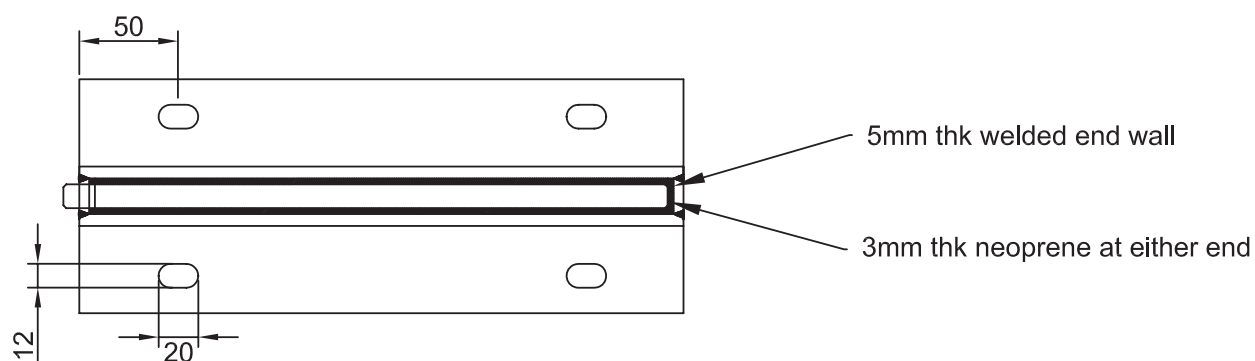
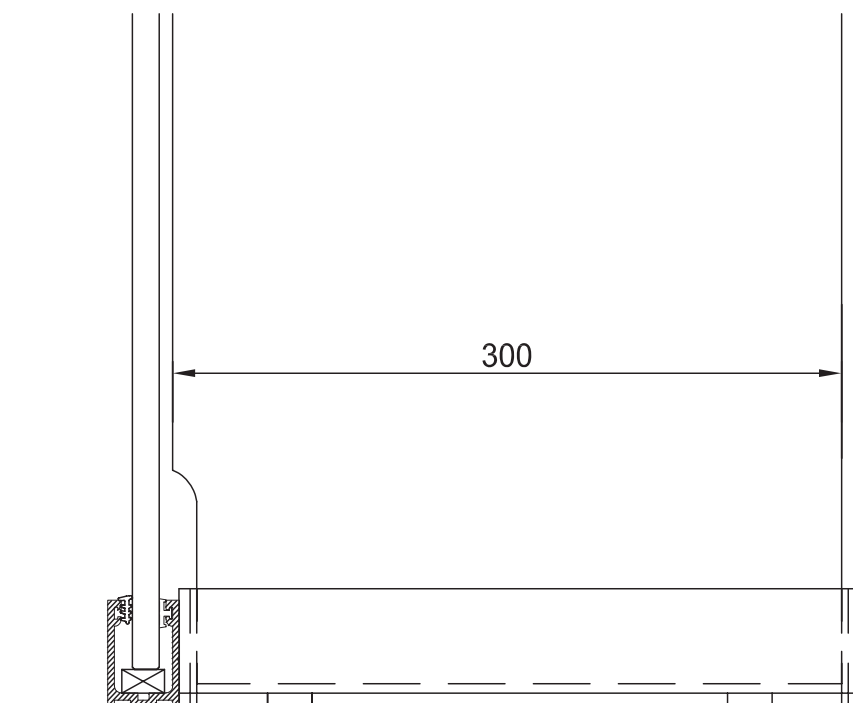
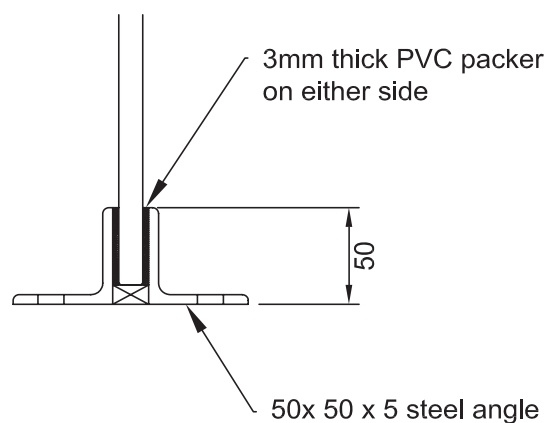
**SPYDER FS300 Glass fin shoe**

**AVAILABLE FINISHES**

- Zinc plated steel (subject to price and leadtime)
- Powdercoated steel (subject to price and leadtime)
- Polished or satin stainless steel (subject to price and leadtime)

**TECHNICAL DETAILS**

- Suitable for 12mm Viridian toughened safety glass
- Bolted to the floor



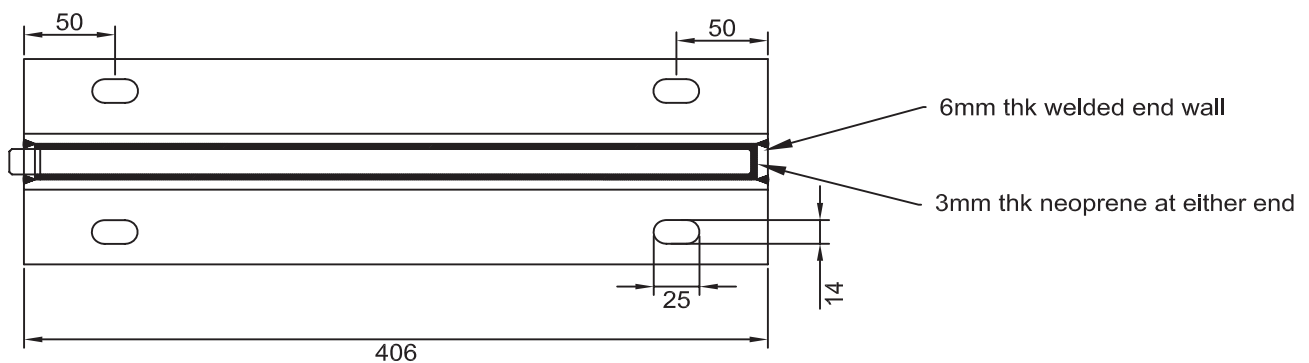
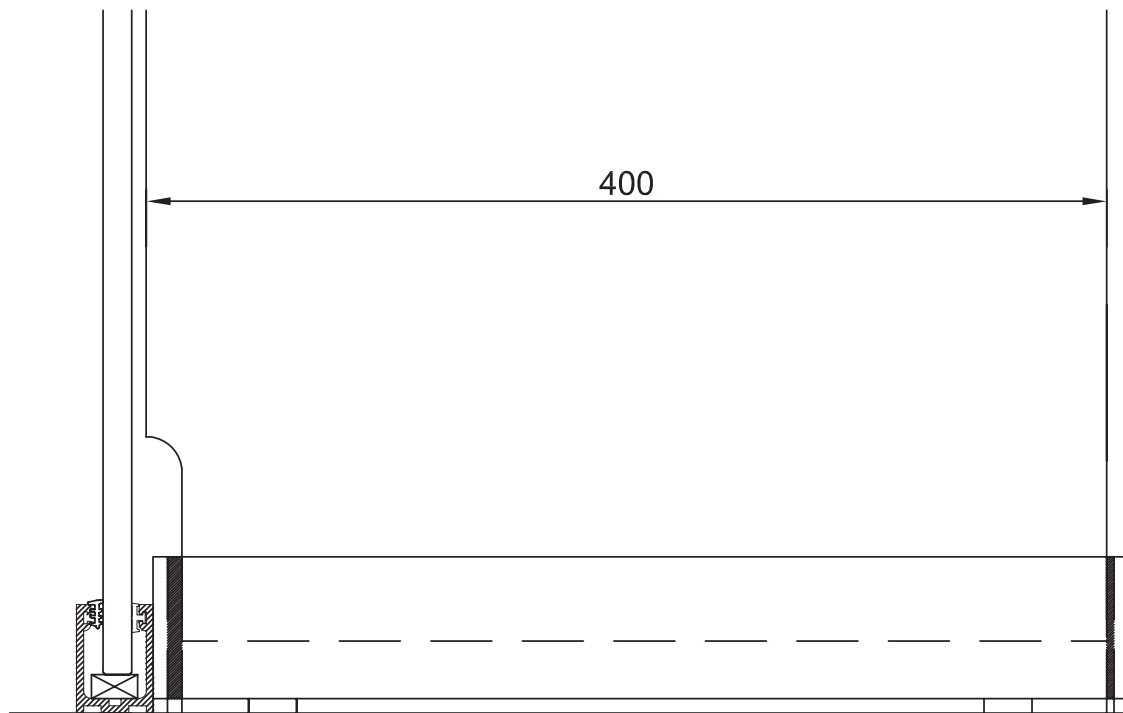
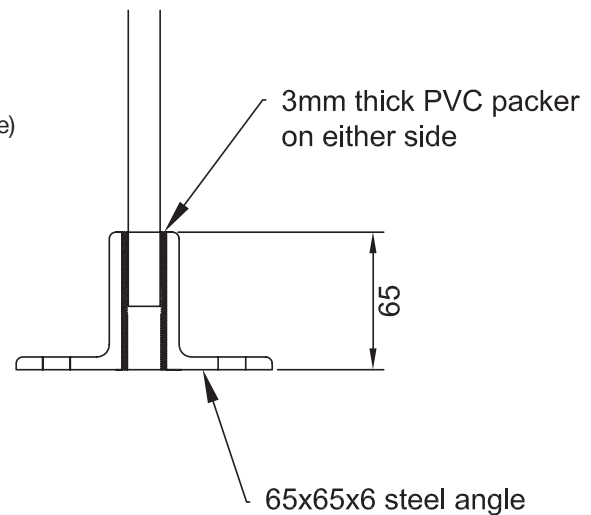
**SPYDER FS400 Glass fin shoe**

**AVAILABLE FINISHES**

- Zinc plated steel (subject to price and leadtime)
- Powdercoated steel (subject to price and leadtime)
- Polished or satin stainless steel (subject to price and leadtime)

**TECHNICAL DETAILS**

- Suitable for 15mm Viridian toughened safety glass
- Floor mounted glass fin shoe



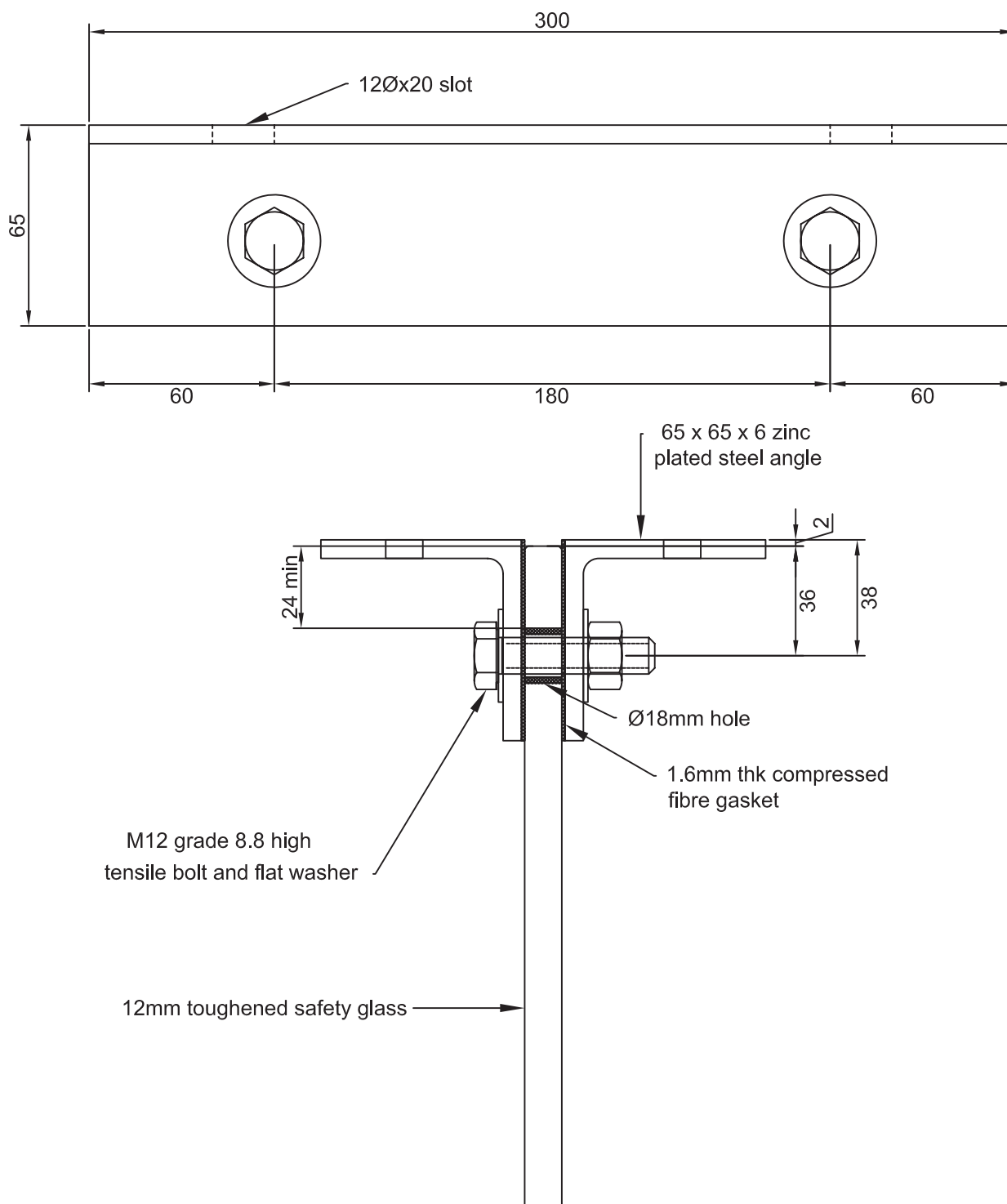
**SPYDER FB300 Glass fin bracket**

**AVAILABLE FINISHES**

- Zinc plated steel (subject to price and leadtime)
- Powdercoated steel (subject to price and leadtime)
- Polished or satin stainless steel (subject to price and leadtime)

**TECHNICAL DETAILS**

- Suitable for 12mm Viridian toughened safety glass
- Glass fin hole = 18mm diameter
- Recommended torque for non lubricated M12 grade 8.8 bolts = 212Nm



**SPYDER FB400 Glass fin bracket**

**AVAILABLE FINISHES**

- Zinc plated steel (subject to price and leadtime)
- Powdercoated steel (subject to price and leadtime)
- Polished or satin stainless steel (subject to price and leadtime)

**TECHNICAL DETAILS**

- Suitable for 15mm Viridian toughened safety glass
- Glass fin hole = 26mm diameter
- Recommended torque for non lubricated M16 grade 8.8 bolts = 212Nm

