

NOTES:

1. This proprietary balustrade system complies with New Zealand Building Code Clauses B1 Structure, B1/AS1 Amendment 15, B2 Durability, F2 Hazardous Building Materials and F4 Safety From Falling Third Edition, subject to:

-all products meeting their required performance specification

-site installation carried out in accordance with the intent of this drawing

2. Based on design loads from AS/NZS 1170.1 and a maximum ULS wind pressure of 2.13 kPa (extra high wind zone), maximum span between posts and glass thicknesses are:

Residential occupancies A, A(other) & C3 of Table 3.3 AS/NZS 1170.1:

Maximum span between posts: 1650mm

Viridian safety glass options according to 22.4.3. of NZS 4223.3:2016 are:

- a. 10mm toughened glass with interlinking rail
- b. 11.2mm toughened laminated glass
- c. 11.52mm toughened SentryGlas laminated glass

-Interlinking rail must be connected to Milano posts, adjacent glass panes or to the building.

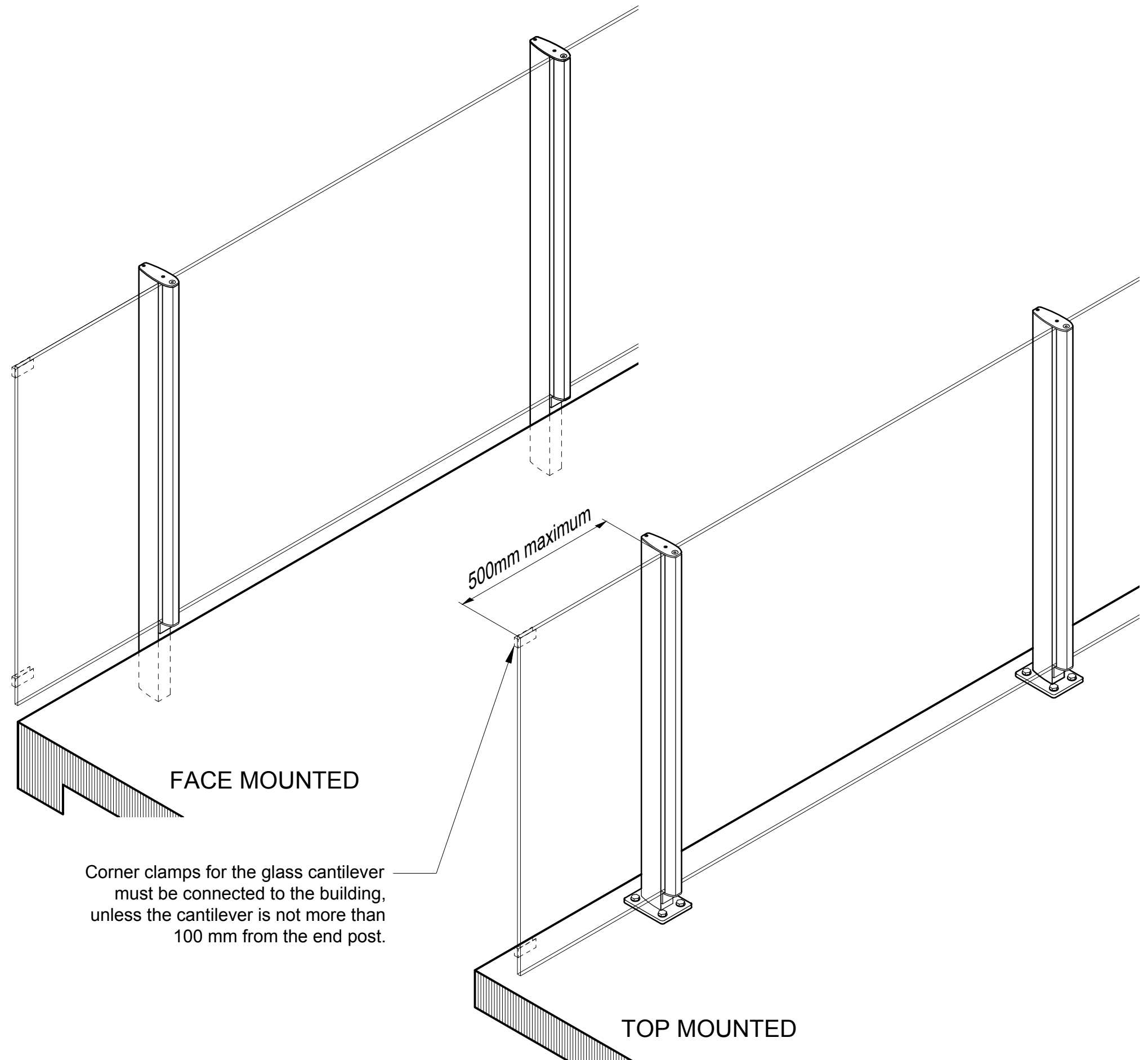
-Corner clamps shall be fixed on top of the glass panel.

3. The design of the concrete support is the responsibility of others.

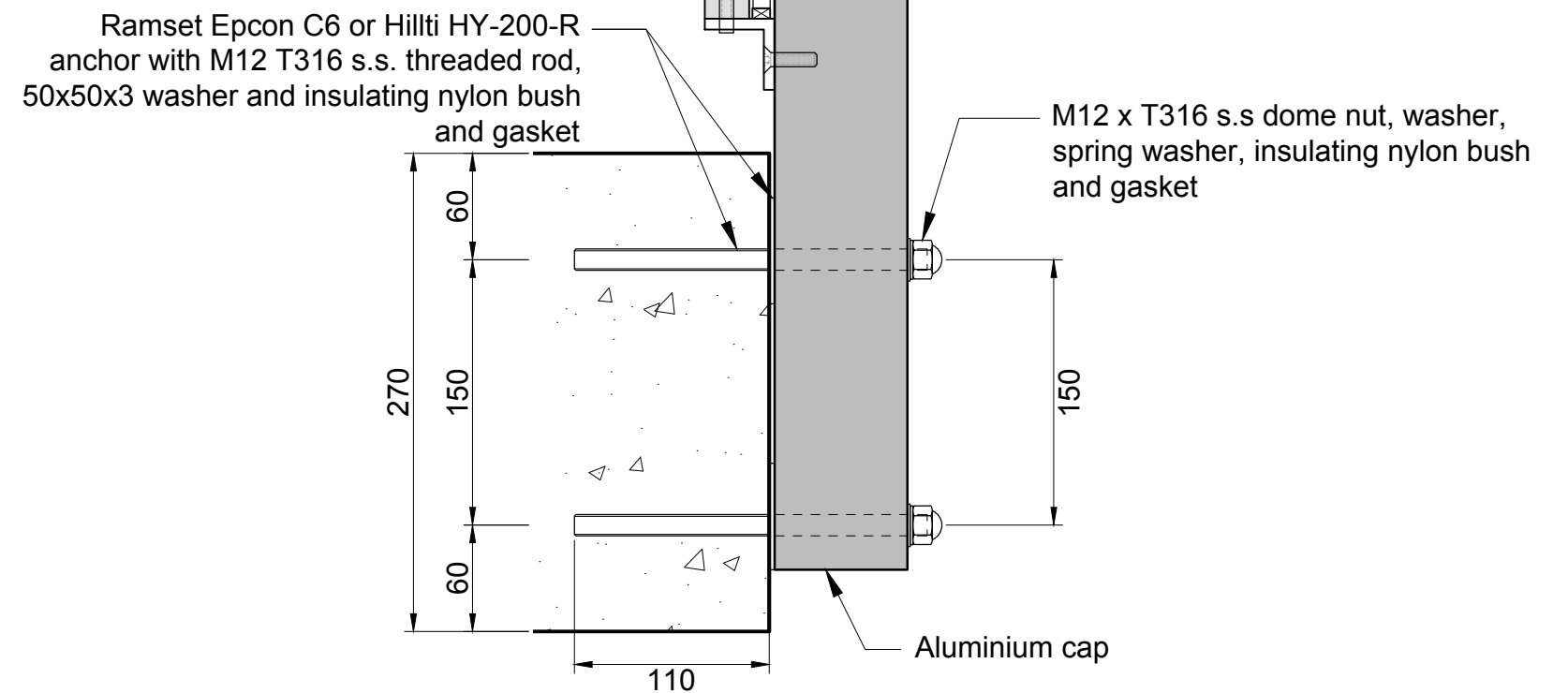
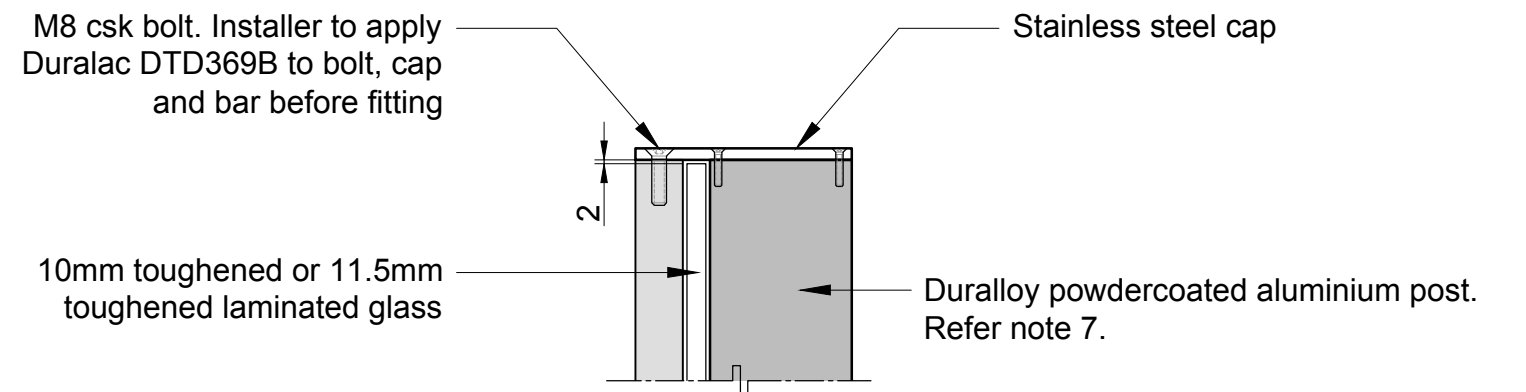
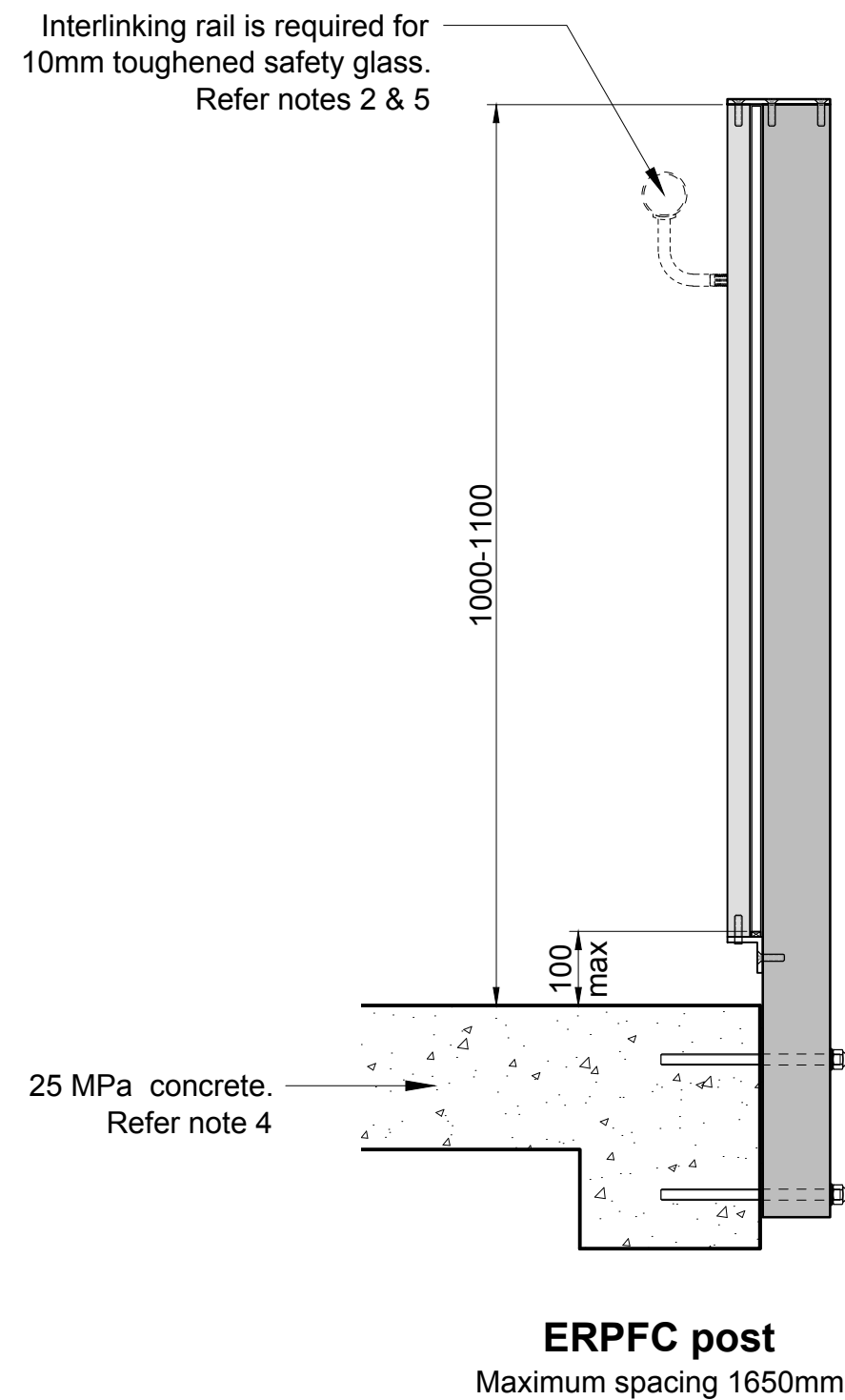
4. A handrail of 32-50mm diameter is required for stairs and ramps exceeding 1:20 slope. Refer NZBC D1/AS1.

5. Use grade 316 stainless steel fixings and washers

6. Duratec powdercoat or 25 micron anodised finish is recommended for installations within 100m of the coast

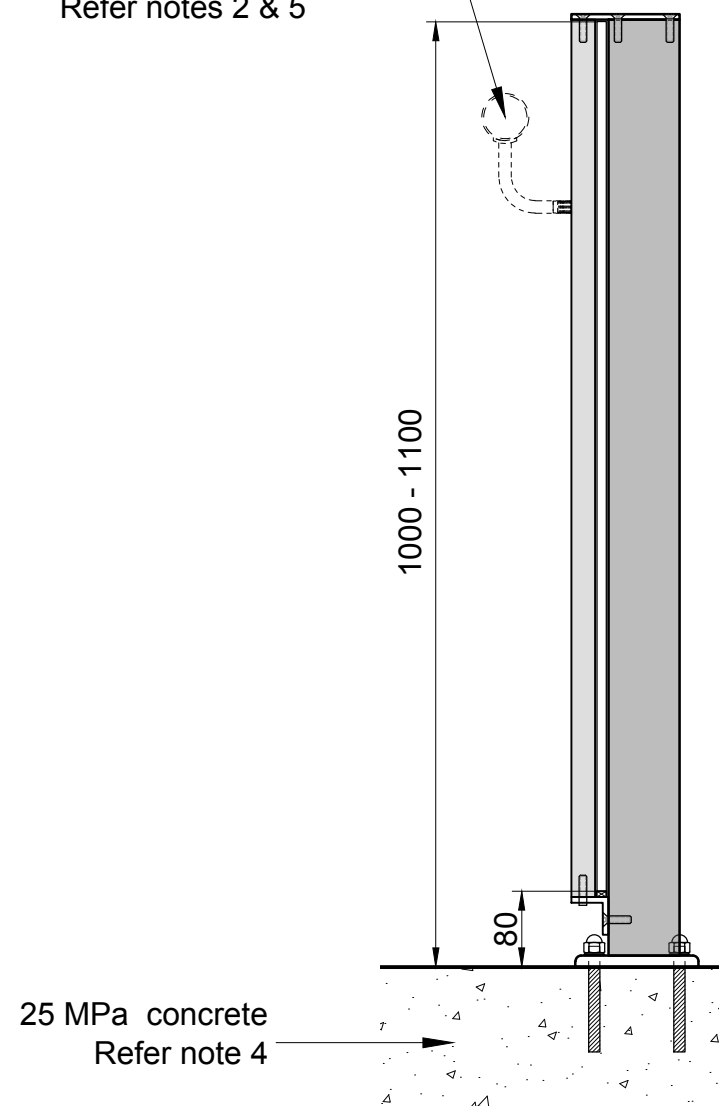


This post is protected by Design Registration # 413097 in New Zealand



This post is protected by Design Registration # 413097 in New Zealand

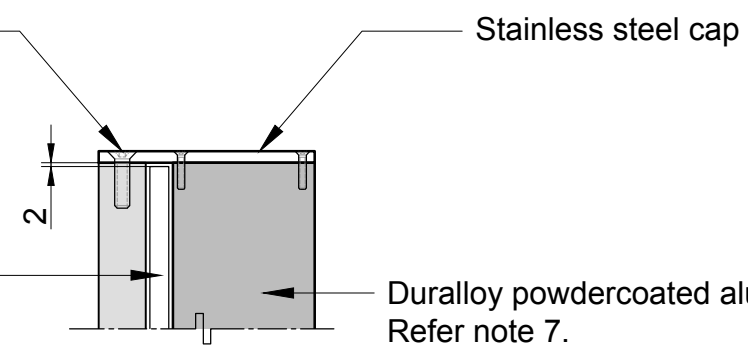
Interlinking rail is required for
10mm toughened safety glass.
Refer notes 2 & 5



ERPTC post
Maximum
spacing 1650mm

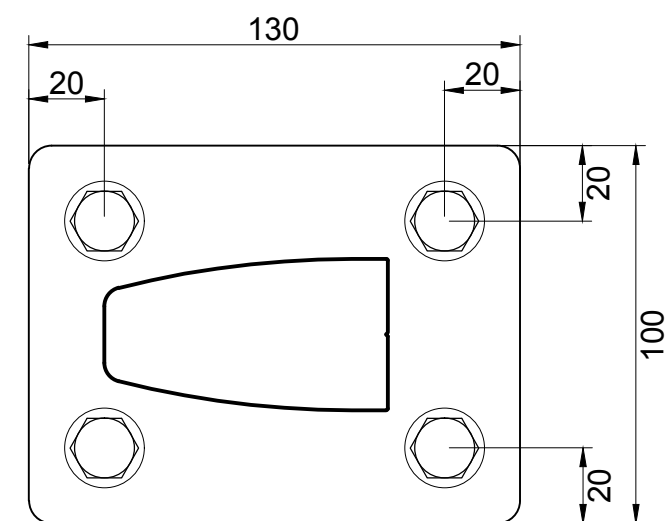
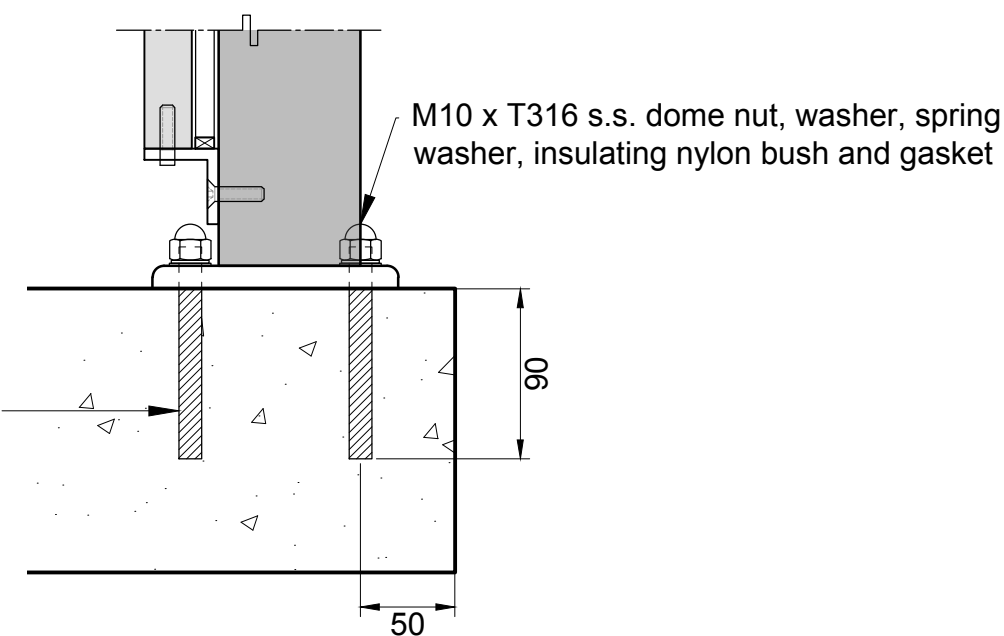
M8 csk bolt. Installer to apply
Duralac DTD269B to bolt, cap
and bar before fitting

10mm toughened or 11.5mm
toughened laminated glass



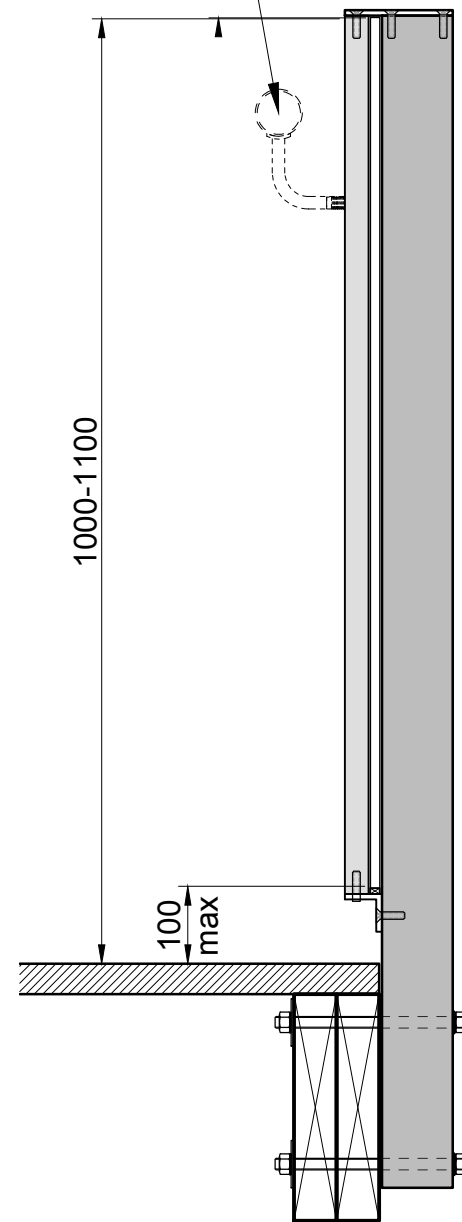
Duralloy powdercoated aluminium post.
Refer note 7.

Ramset Epcon C6 or Hilti
HY-200-R anchor with M10
T316 threaded rod



This post is protected by Design Registration # 413097 in New Zealand

Interlinking rail is required for
10mm toughened safety glass.
Refer notes 2 & 5



ERPFBT post
Maximum spacing
1650mm

M8 csk bolt. Installer to apply Duralac
DTD369B to bolt, cap and bar before fitting

Stainless steel cap

10mm toughened or 11.5mm
toughened laminated glass

Duralloy powdercoated aluminium post.
Refer note 7.

50x50x3 s.s washer

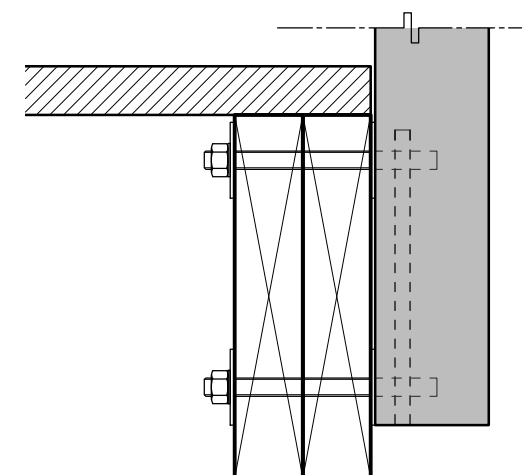
M12 x T316 s.s bolt, washer, spring
washer, insulating nylon bush and gasket

T316 s.s nut & 50x50x3 washer

30
150
100 max

Aluminium cap

FIXING DETAIL A

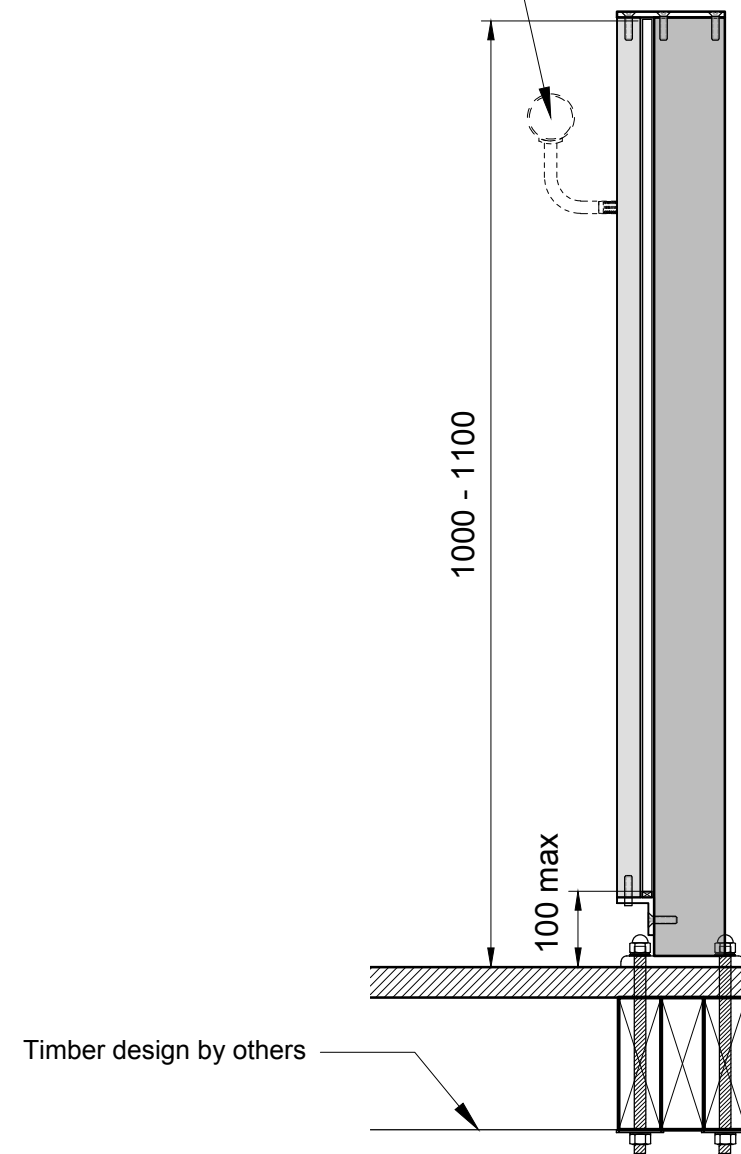


ERPHBT post
Concealed fixings

FIXING DETAIL B

This post is protected by Design Registration # 413097 in New Zealand

Interlinking rail is required for
10mm toughened safety glass.
Refer notes 2 & 5

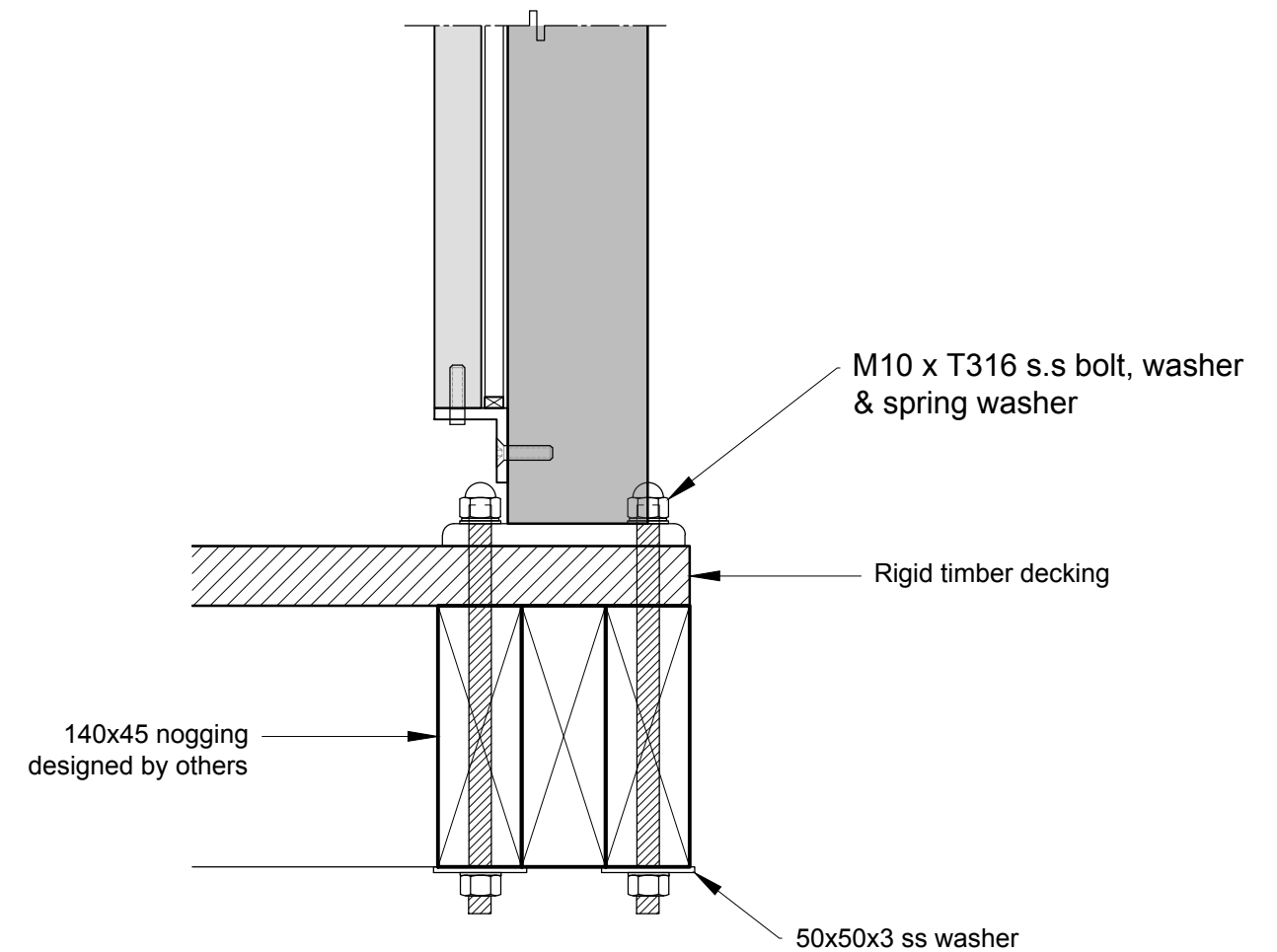
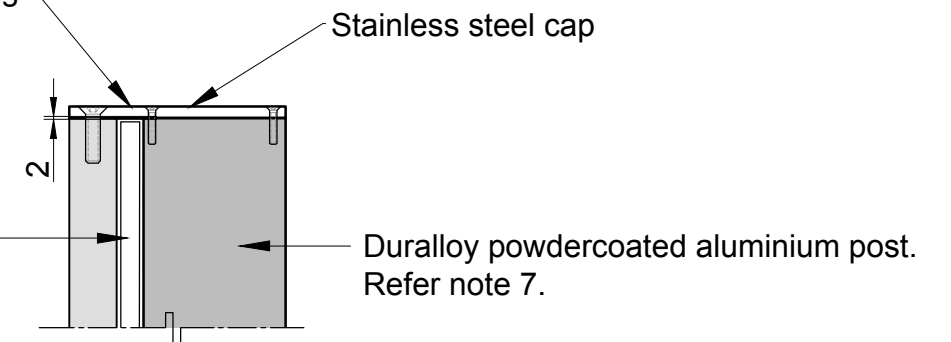


ERPTT post

Maximum spacing
1650mm

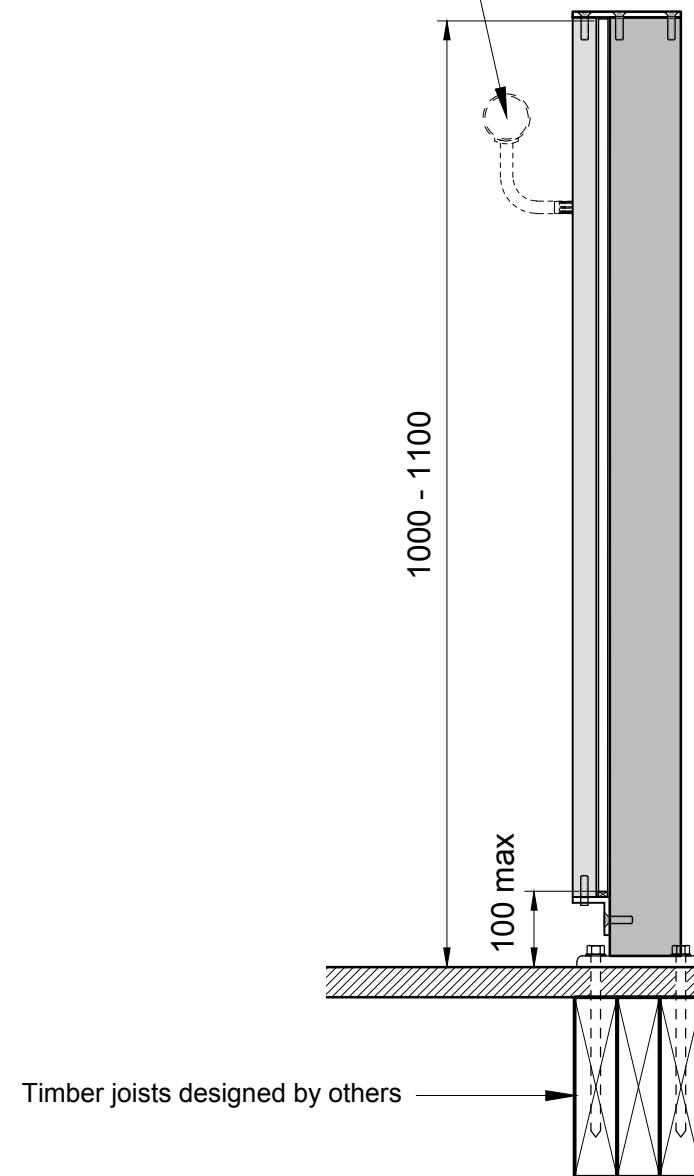
M8 csk bolt. Installer to apply Duralac
DTD369B to bolt, cap and bar before fitting

10mm toughened or 11.5mm
toughened laminated glass



This post is protected by Design Registration # 413097 in New Zealand

Interlinking rail is required for
10mm toughened safety glass.
Refer notes 2 & 5



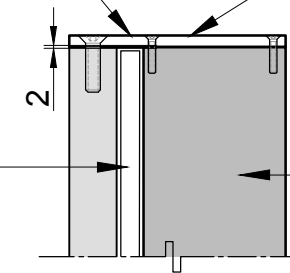
ERPTT post
Maximum spacing
1650mm

M8 csk bolt. Installer to apply Duralac
DTD369B to bolt, cap and bar before fitting

Stainless steel cap

10mm toughened or 11.5mm
toughened laminated glass

Duralloy powdercoated aluminium post.
Refer note 7.

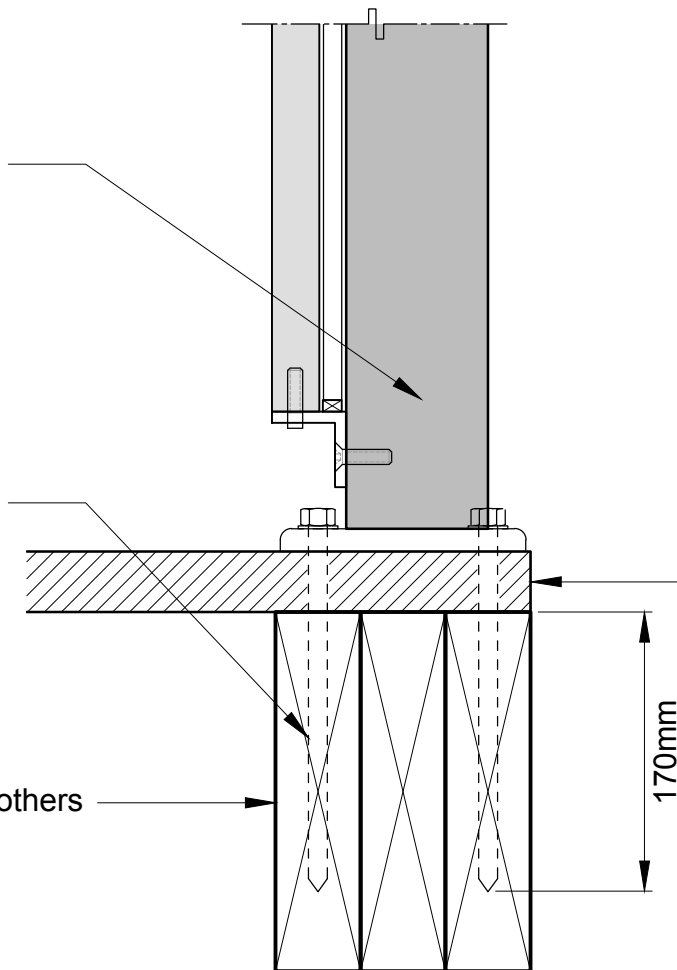


Maximum post
spacing of 1200mm

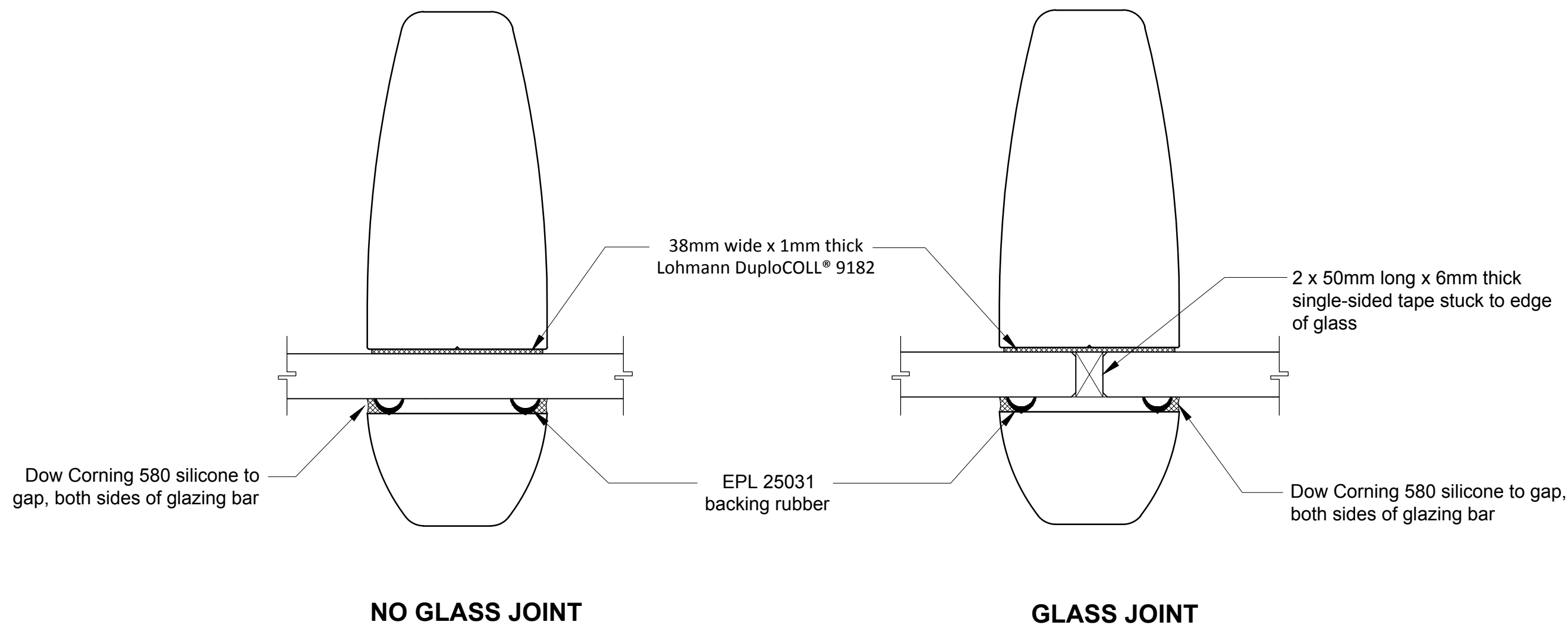
SS316 M10 Coachscrews
into timber framing with
min. 170mm penetration

Rigid timber decking

Timber joists designed by others



This post is protected by Design Registration # 413097 in New Zealand



GLAZING DETAILS

This post is protected by Design Registration # 413097 in New Zealand