

**NOTES:**

1. This proprietary balustrade system complies with New Zealand Building Code Clauses B1 Structure, B1/AS1 Amendment 15, B2 Durability, F2 Hazardous Building Materials and F4 Safety From Falling Third Edition, subject to:

- all products meeting their required performance specification
- site installation carried out in accordance with this drawing and the attached fixing details
- 1100mm minimum height from finished floor level

2. Viridian safety glass options according to 22.4.3 of NZS 4223.3:2016 are:

- a. 15mm toughened glass with interlinking rail
- b. 17.2mm toughened laminated glass
- c. 17.52mm toughened SentryGlas laminated glass

-Interlinking rail must be connected to Milano posts, adjacent glass panes, or the building.

-Corner clamps shall be fixed on top of the glass panel

3. The design of concrete, steel or timber support structure is the responsibility of others.

4. A handrail of 32-50mm diameter is required for stairs and ramps exceeding 1:20 slope. Refer NZBC D1/AS1.

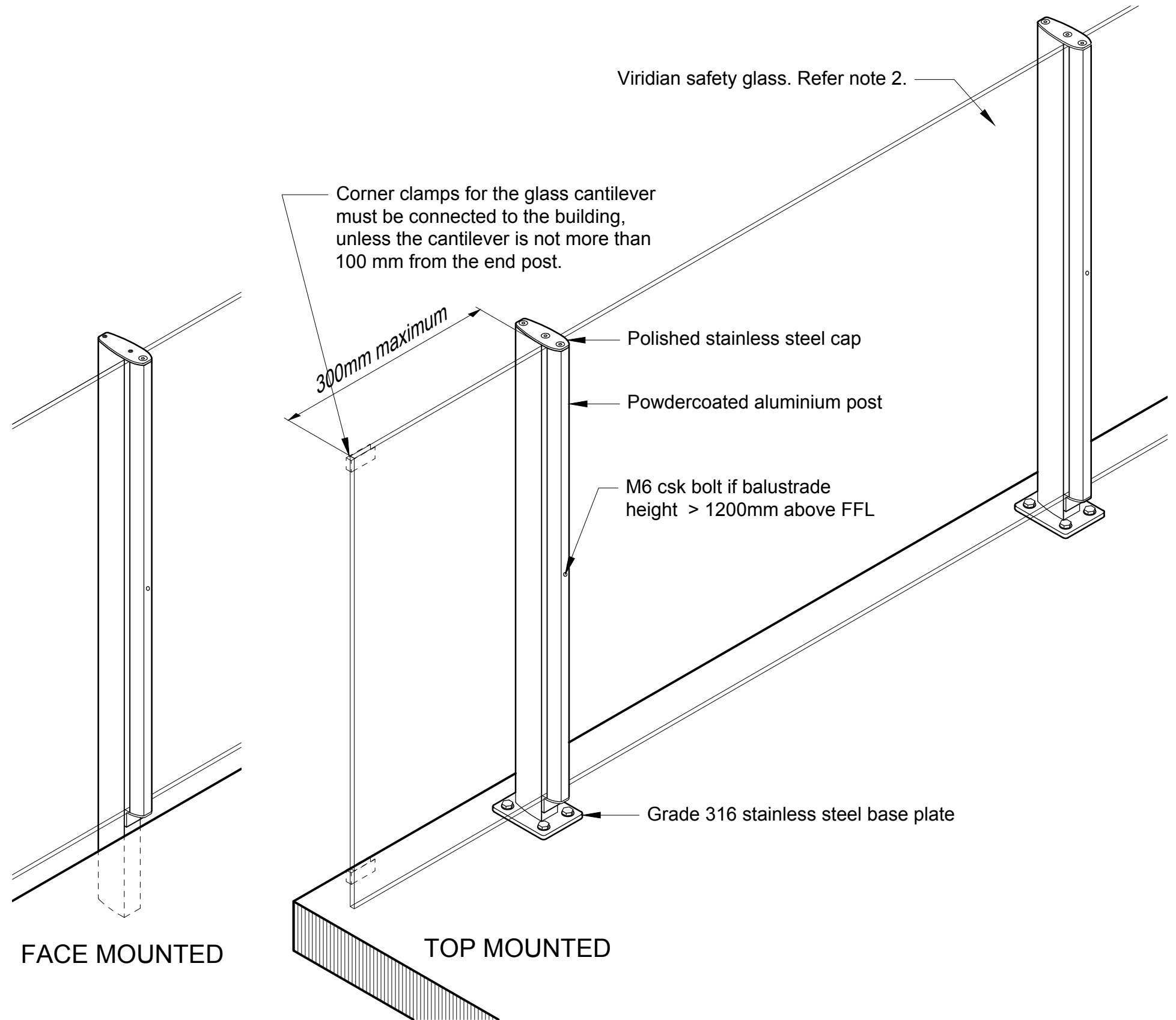
5. Use grade 316 stainless steel fixngs and washers

6. Duratec powdercoat or 25 micron anodised finish is recommended for installations within 100m of the coast

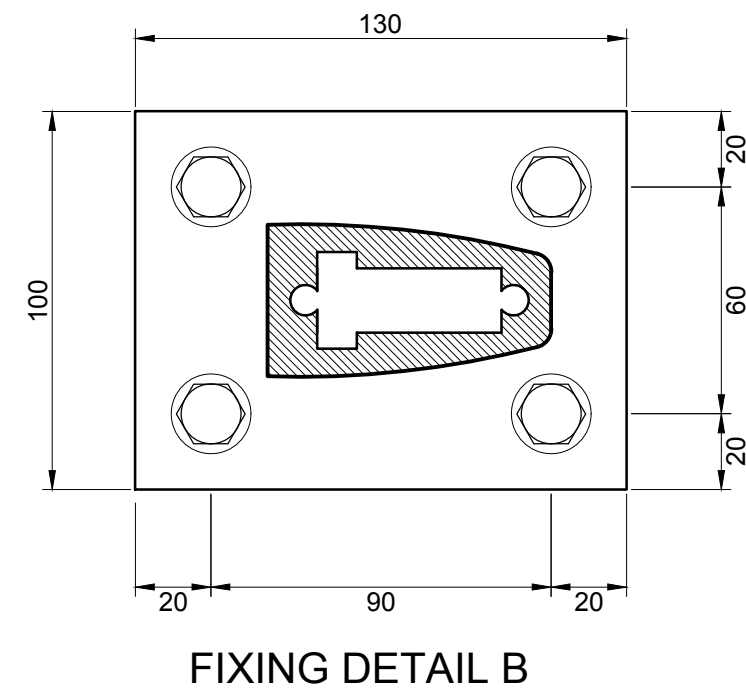
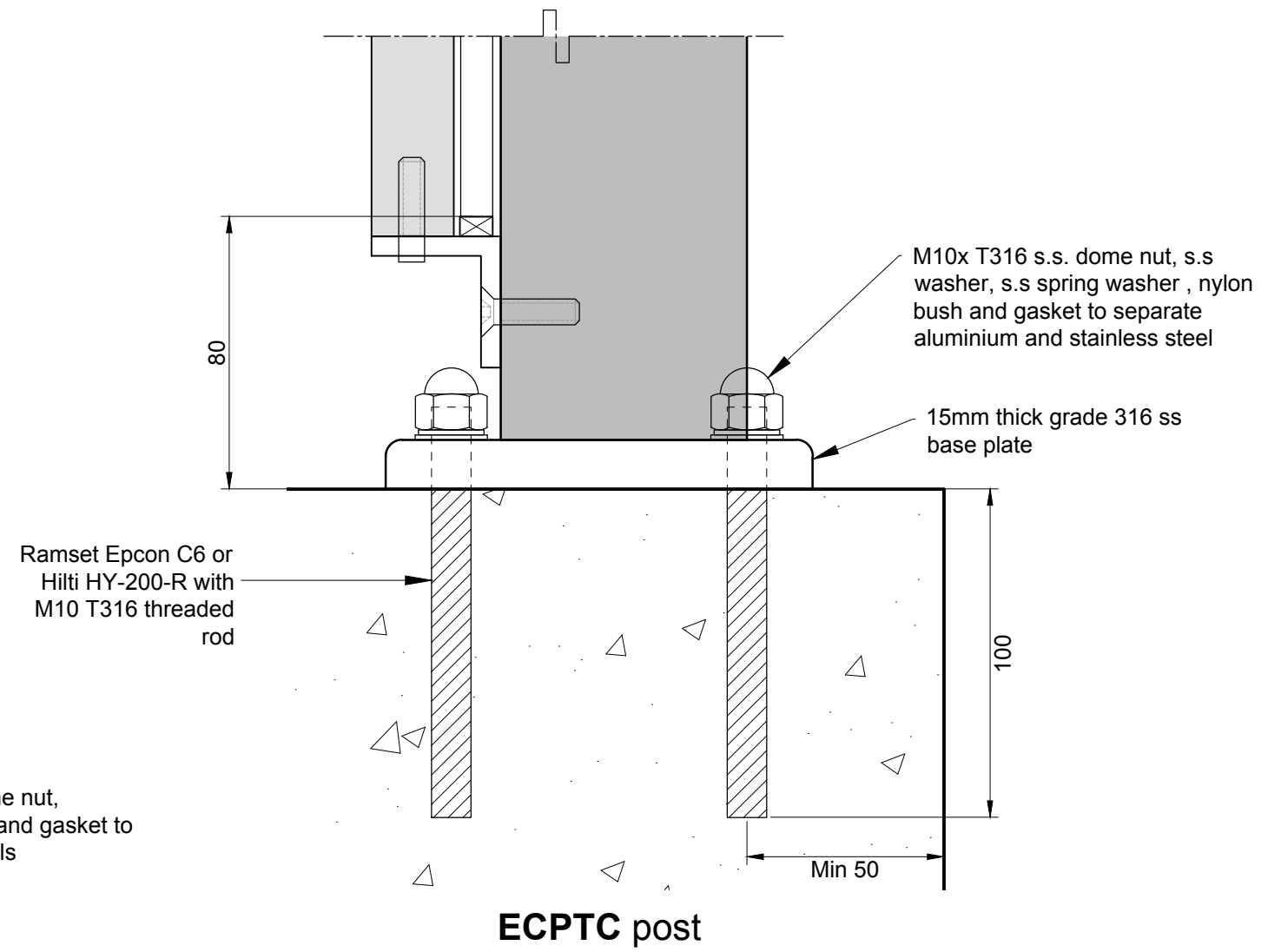
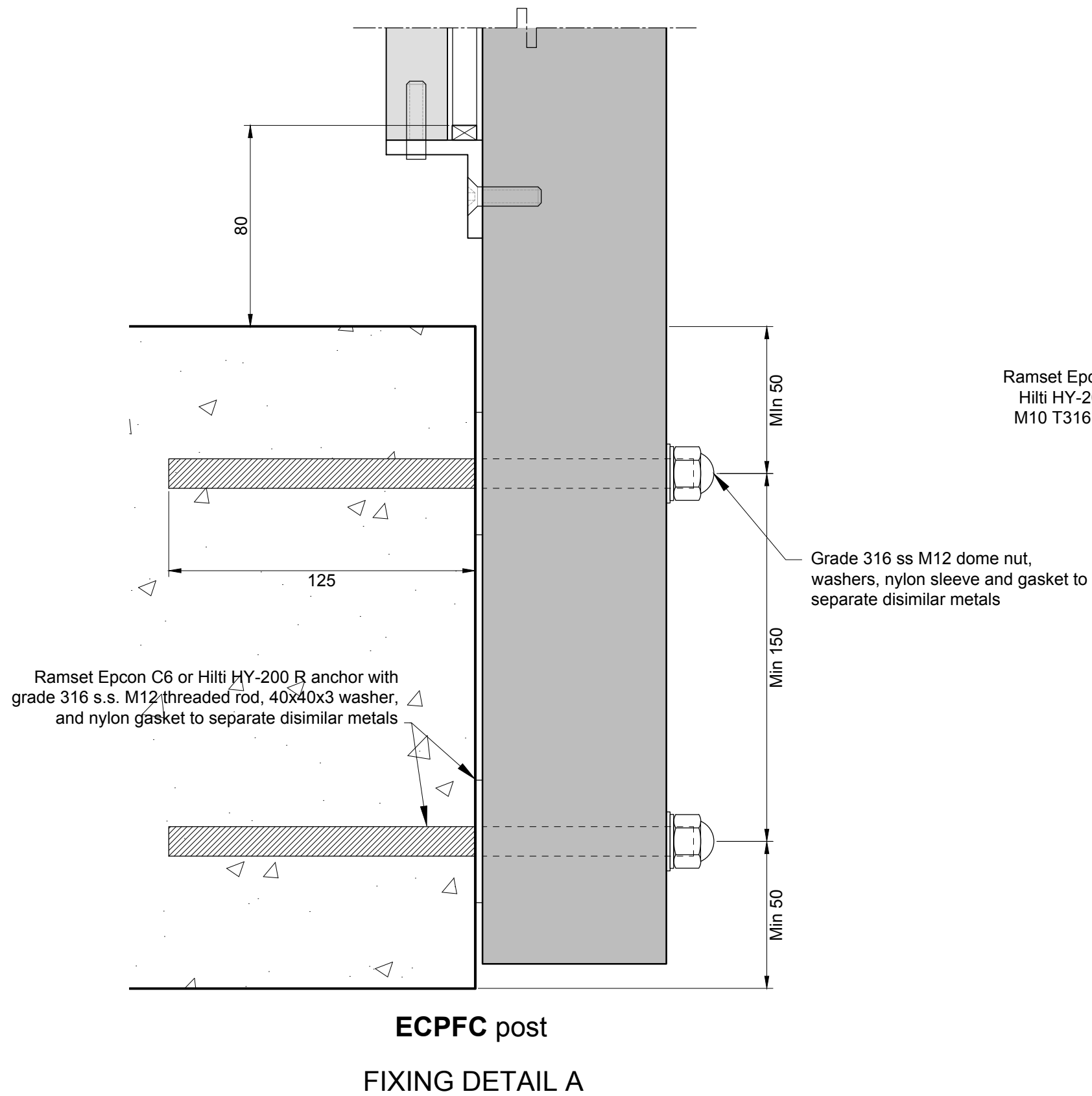
7. Based on design loads from AS/NZS 1170.1 and a maximum uls wind pressure of 2.13 kPa, maximum balustrade heights and spans between posts are provided in the table below.

Post spacing, mm	Top fixed post - height from base plate, mm	Face fixed post - height from top fixing, mm
1100	1100	1200
1000	1200 - 1500	1300-1600
950	1600	1700
850	1700	1800
750	1800	1900

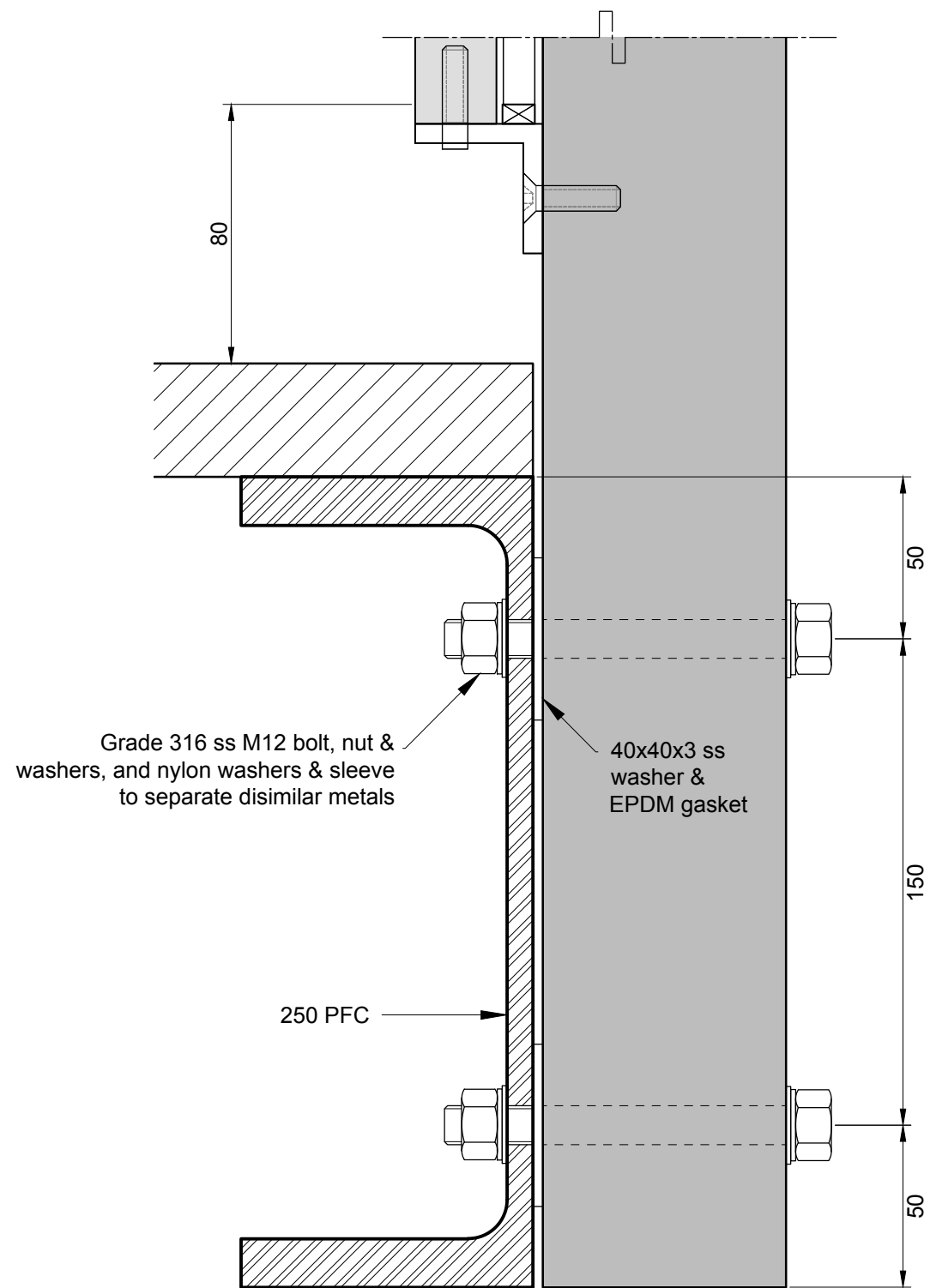
Allow M6 grade 316 csk bolt at middle of post if balustrade height > 1200mm above FFL (finished floor level)



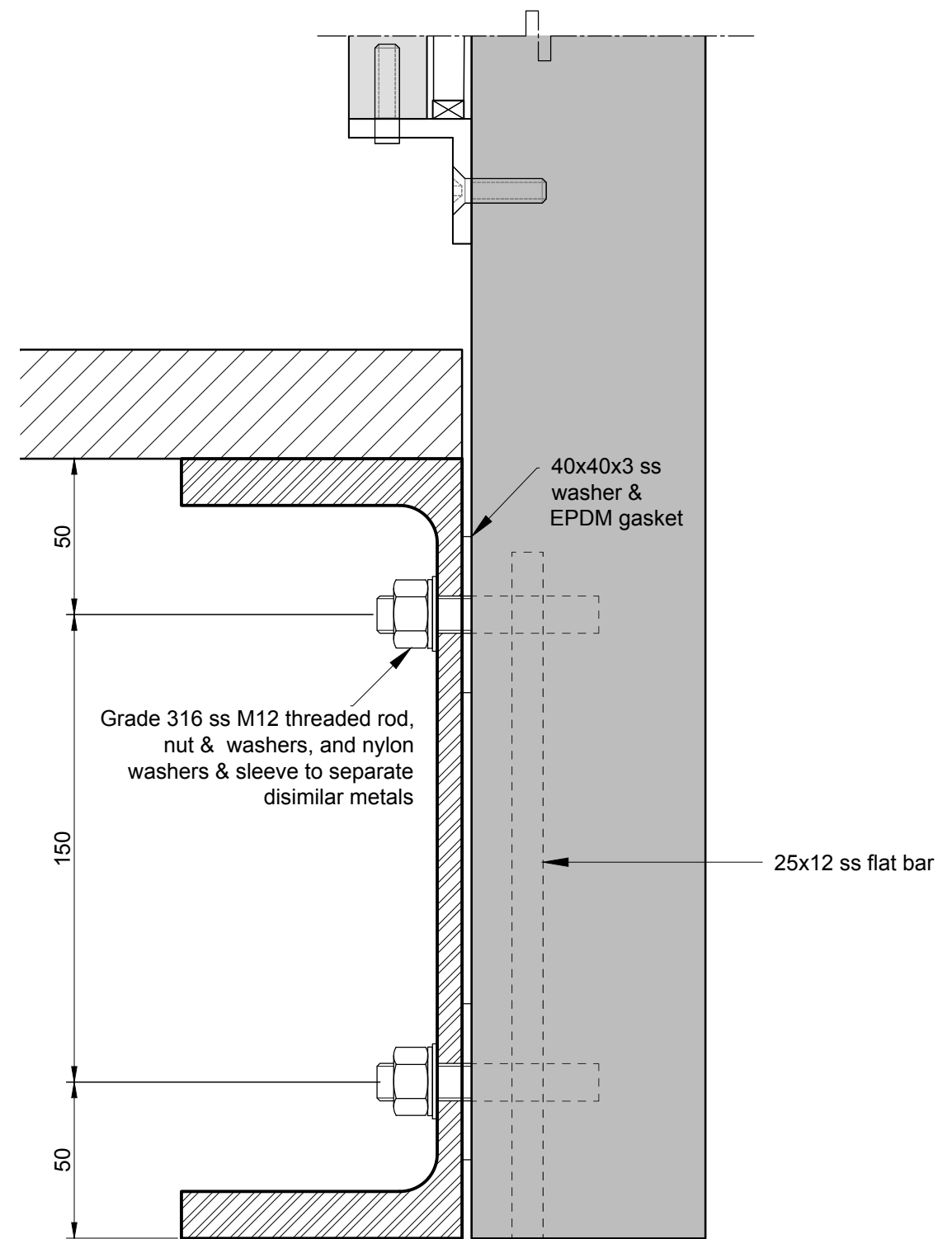
This post is protected by Design Registration # 413097 in New Zealand



This post is protected by Design Registration # 413097 in New Zealand

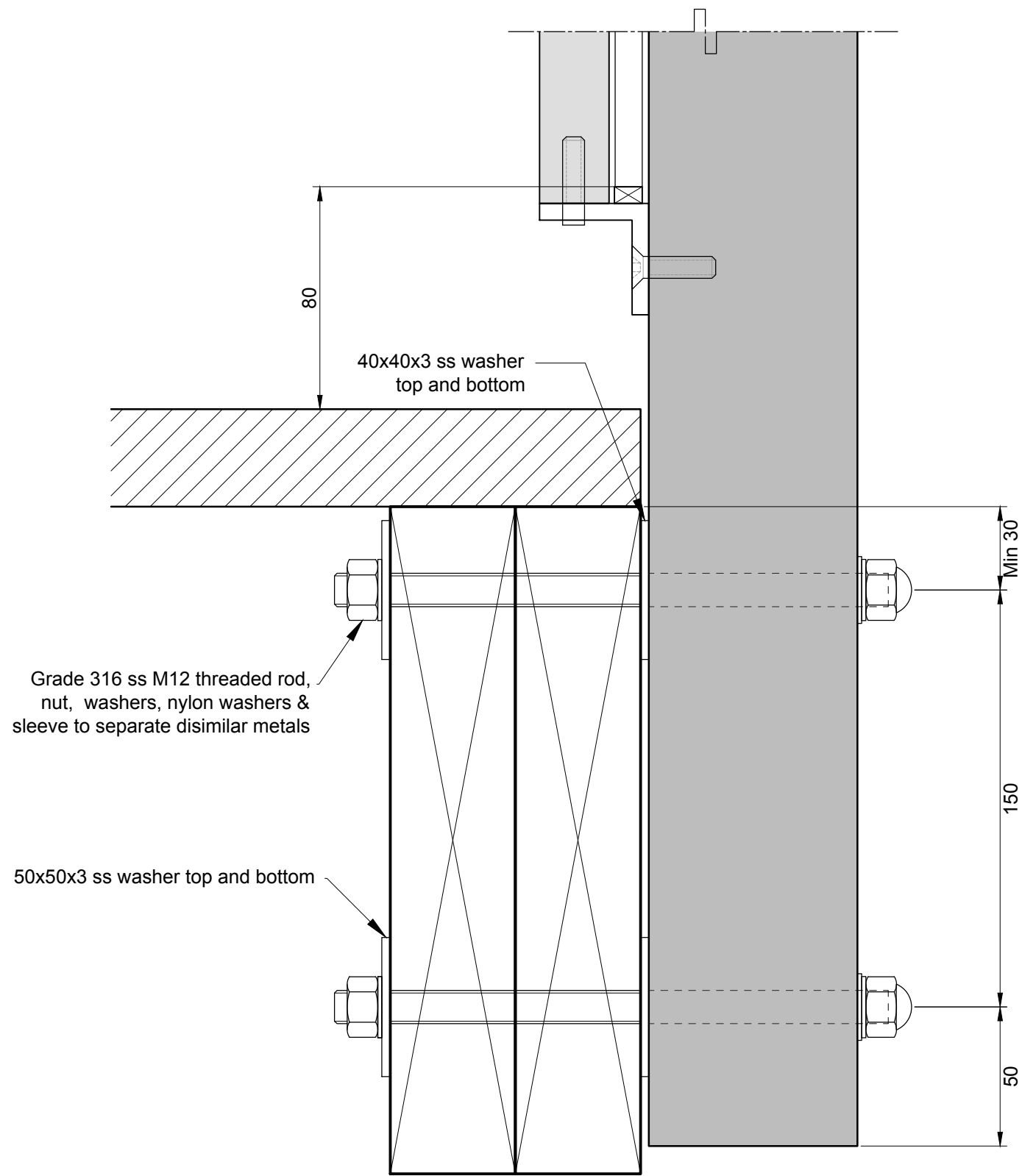


**ECPTS post**  
FIXING DETAIL A

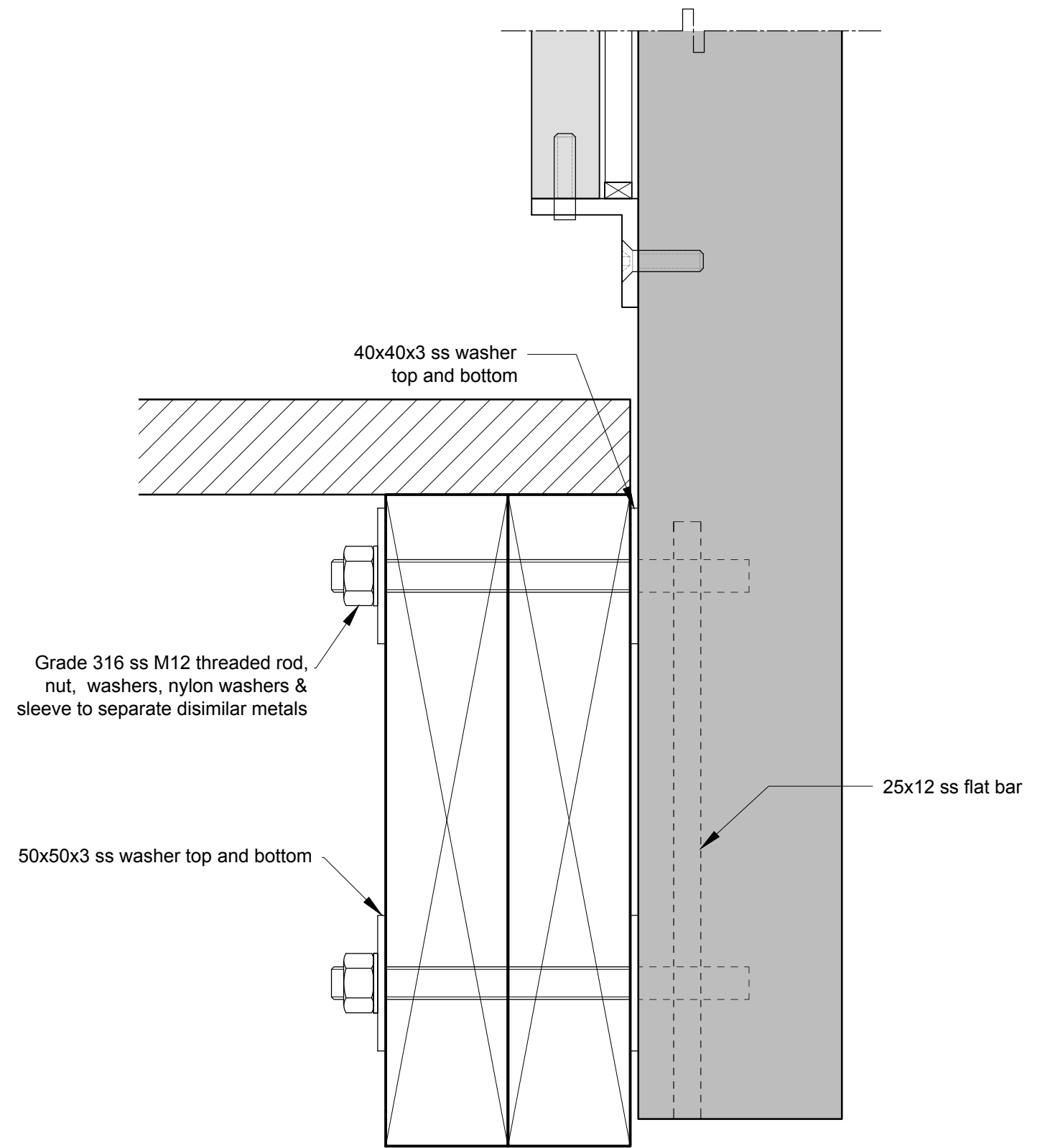


**ECPHS post**  
FIXING DETAIL B

This post is protected by Design Registration # 413097 in New Zealand

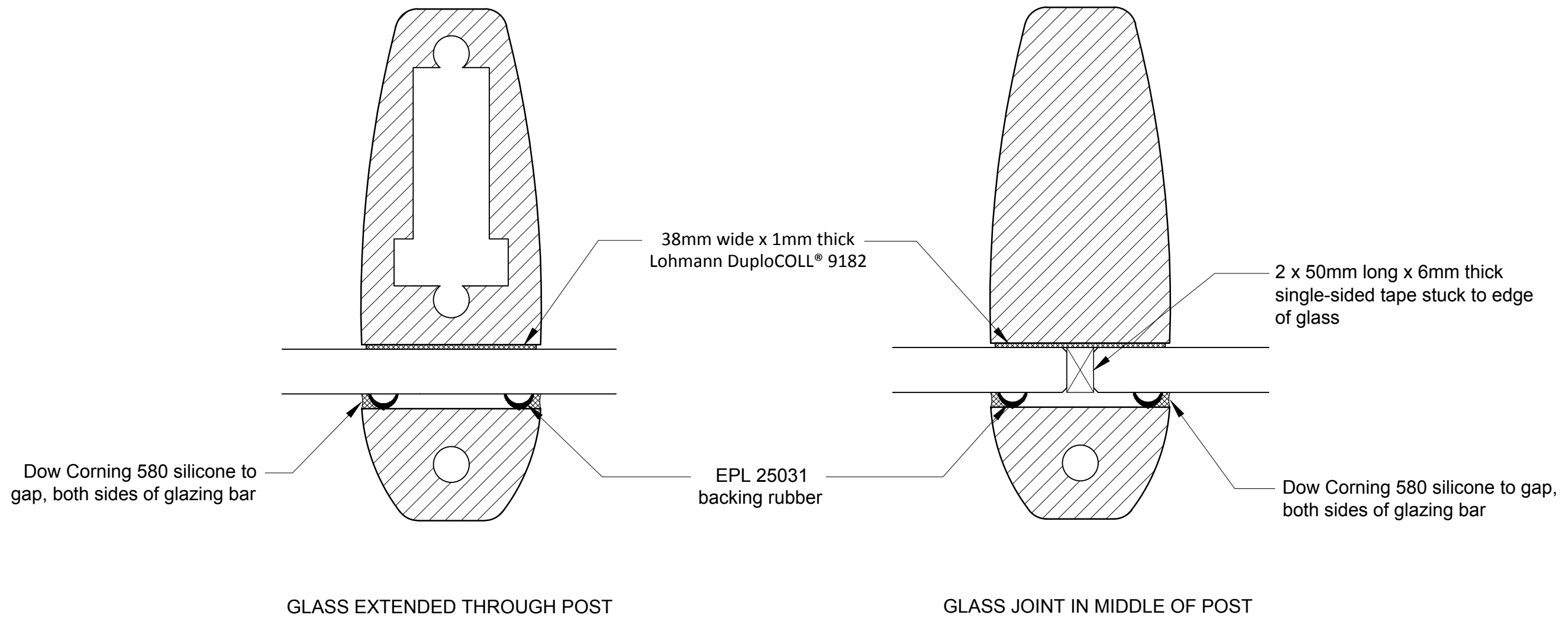


**ECPFBT post**  
FIXING DETAIL A



**ECPHBT post**  
(concealed fixing)  
FIXING DETAIL B

This post is protected by Design Registration # 413097 in New Zealand



GLAZING DETAILS

This post is protected by Design Registration # 413097 in New Zealand