

**HRC1 Roundline Interlinking Handrail**  
2205 Duplex Stainless Steel Interlinking Handrail Capping

**AVAILABLE FINISHES**

- Polished stainless steel
- Satin stainless steel, lead time applies

**TECHNICAL DETAILS**

5.8m stock lengths

Glass width limits can be found on page B14

Easy to install using simple tools, no on site welding required

Roundline is easily attached to the glass using a compression fit rubber molding

Suitable for 12mm, 15mm and 19mm toughened safety glass

and 13.5mm and 17.5mm toughened laminated safety glass

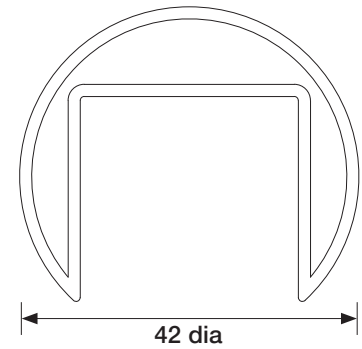
Joiners, end caps and wall mount brackets are glued together using tube lock

Joiners need be located between the glass panes

Wall mount bracket requires a EPDM washer when penetrating

cladding, weatherboards and membrane surfaces

EPDM washers are sold separately (lead time applies)



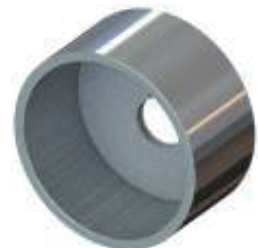
**Range of components;**



**HRC1SJ**  
Straight Joiner



**HRC1EC**  
End Cap



**HRC1WA**  
Wall Anchor



**HRC1C90**  
Cast 90deg Corner



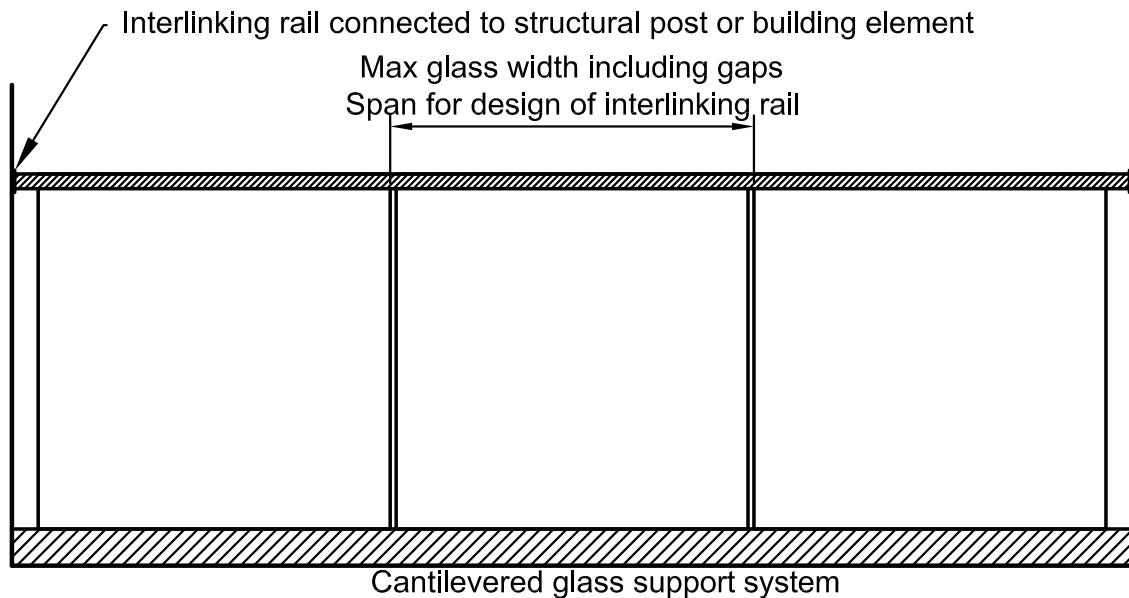
**HRC1VAJ**  
Vertical Adjustable Joiner



**HRC1HAJ**  
Horizontal Adjustable Joiner

**HRC1 Roundline Interlinking Handrail**

**TECHNICAL DETAILS - GLASS WIDTH LIMITS**



**HRC1 Roundline Interlinking Handrail**

**Occupancy type A other and C3;** Maximum glass width 2200mm

**Occupancy type C1/C2 & D;** Maximum glass width 1400mm

**Occupancy type C5;** Specific design is required

**Notes:**

- 1) These interlinking rails are designed to resist SLS design loads in the event of a single pane of glass breaking
- 2) Interlinking rail must be supported by each pane, structural post or other building element
- 3) Interlinking rail must be mechanically connected using joiners or welded together
- 4) Joiners or welds need be located between the glass panes
- 5) In the unlikely event of a glass pane breaking, the deflection of this interlinking rail under SLS design loads is restricted to  $\text{span} / 60$
- 6) Specific design is required for occupancy type C5