

This drawing is provided as a general guide only. Viridian Glass Ltd Partnership disclaim any responsibility for loss or damage suffered from the use of this drawing.

**NOTES:**

1. This proprietary balustrade system complies with New Zealand Building Code Clauses B1 Structure, B1/AS1 Amendment 15, B1/VM1, F2 Hazardous Building Materials and F4 Safety From Falling Third Edition, subject to:

- all products meeting the required performance specification
- site installation carried out in accordance with intent of this drawing

2. Maximum height H of glass above top anchors for residential occupancies B, E and C3 of Table 3.3 AS/NZS 1170.1 are:

- H - 1200mm maximum for up to extra high wind zone 2.13 kPa

3. The design of the concrete, timber or steel support is the responsibility of others. Timber joints must be strapped.

4. A handrail of 32-50mm diameter is required for stairs and ramps exceeding 1:20 slope. Refer NZBC D1/AS1.

5. Viridian safety glass options according to 22.4.3 of NZS 4223.3:2016 are:

- a. 15mm toughened glass with interlinking rail
- b. 17.52mm toughened SentryGlas laminated glass with a minimum pane width of 1200mm

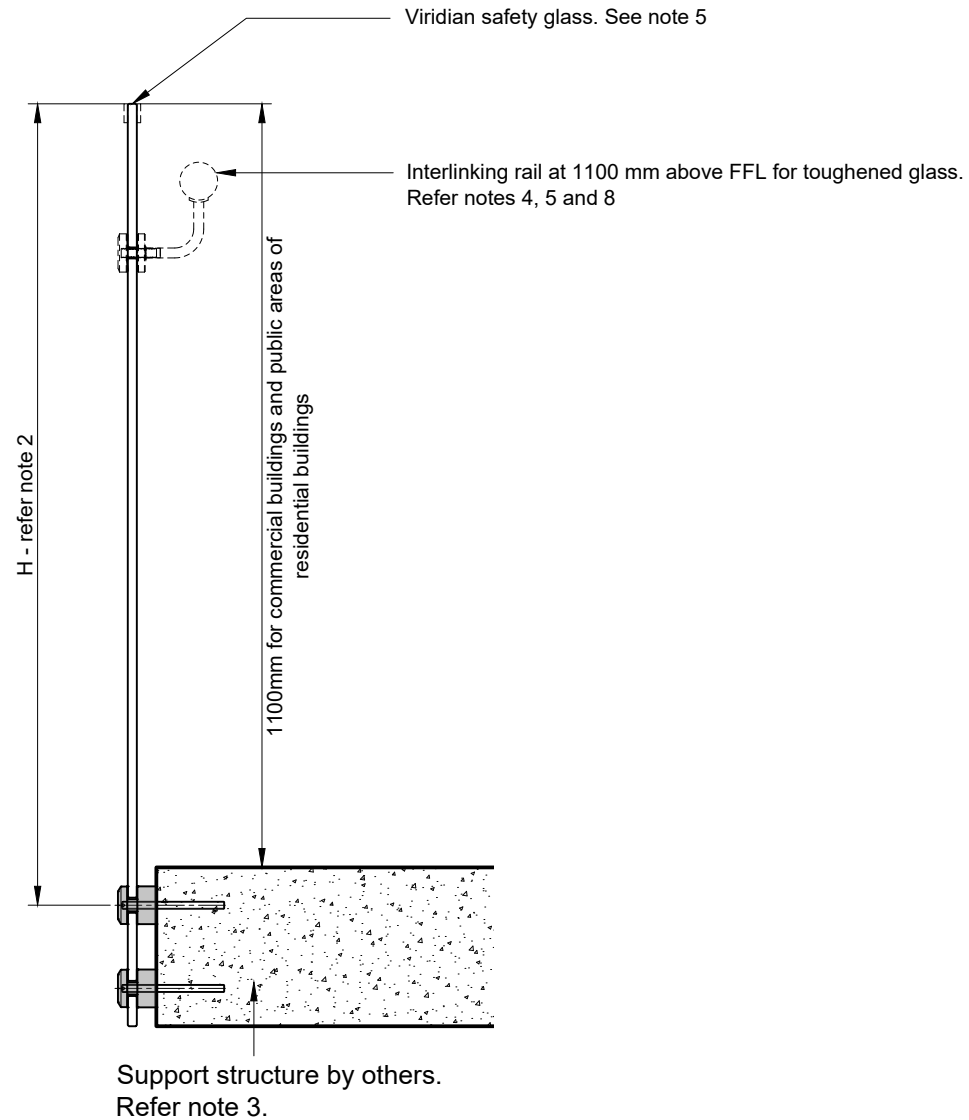
When interlinking rail is required, it must be connected to each glass pane or to the building.

6. The design of the support structure is the responsibility of others.

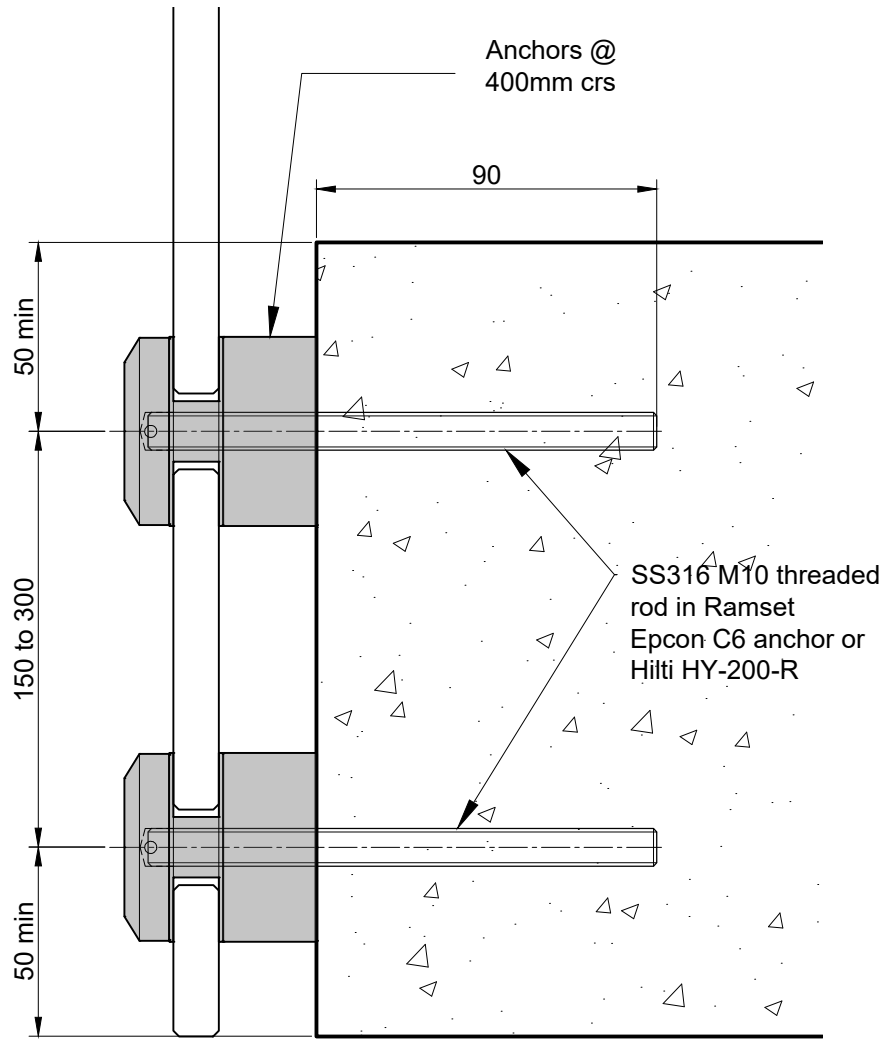
7. A handrail of 32-50mm diameter is required for stairs and ramps exceeding 1:20 slope. Refer NZBC D1/AS1.

8. Maximum distance from side edge of glass to fixings is 200mm.

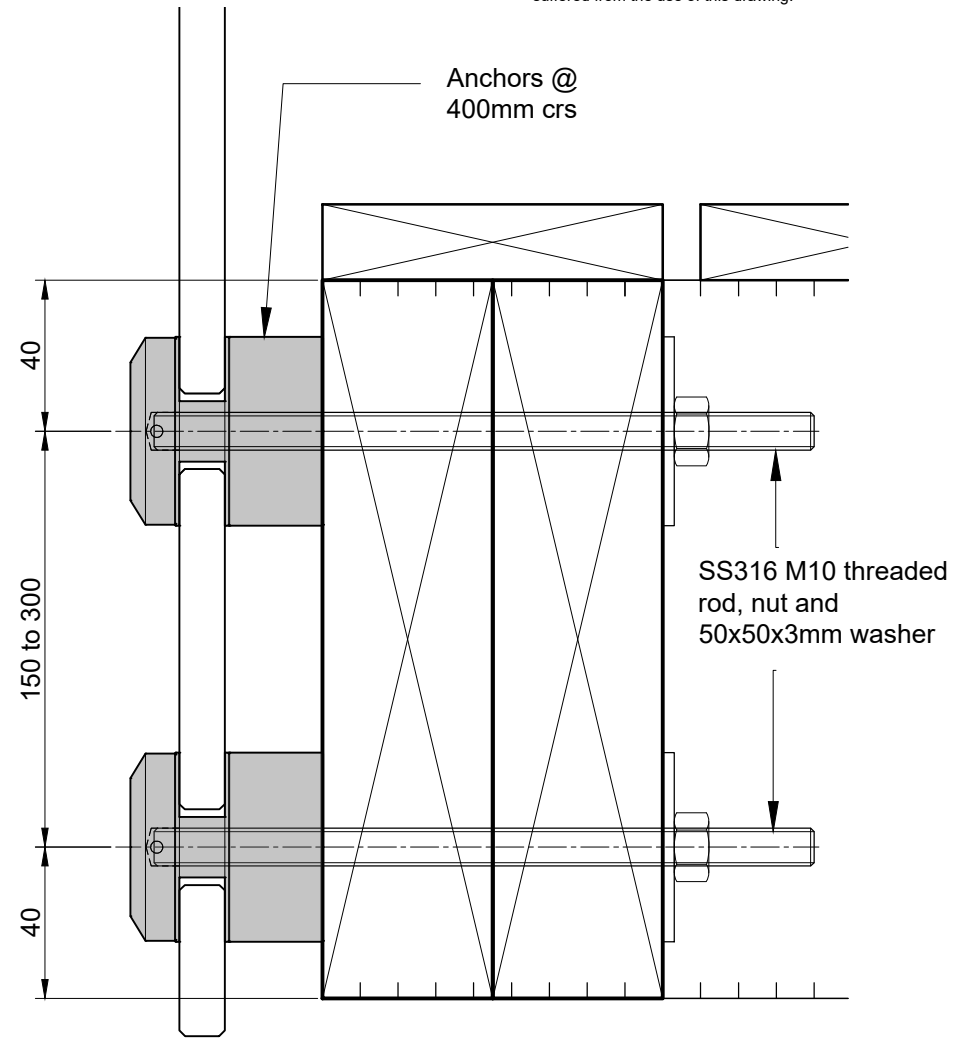
9. This system is not suitable for balustrades in areas susceptible to overcrowding such as theatres, cinemas, assembly halls, stadiums etc.



This drawing is provided as a general guide only. Viridian Glass Ltd Partnership disclaim any responsibility for loss or damage suffered from the use of this drawing.

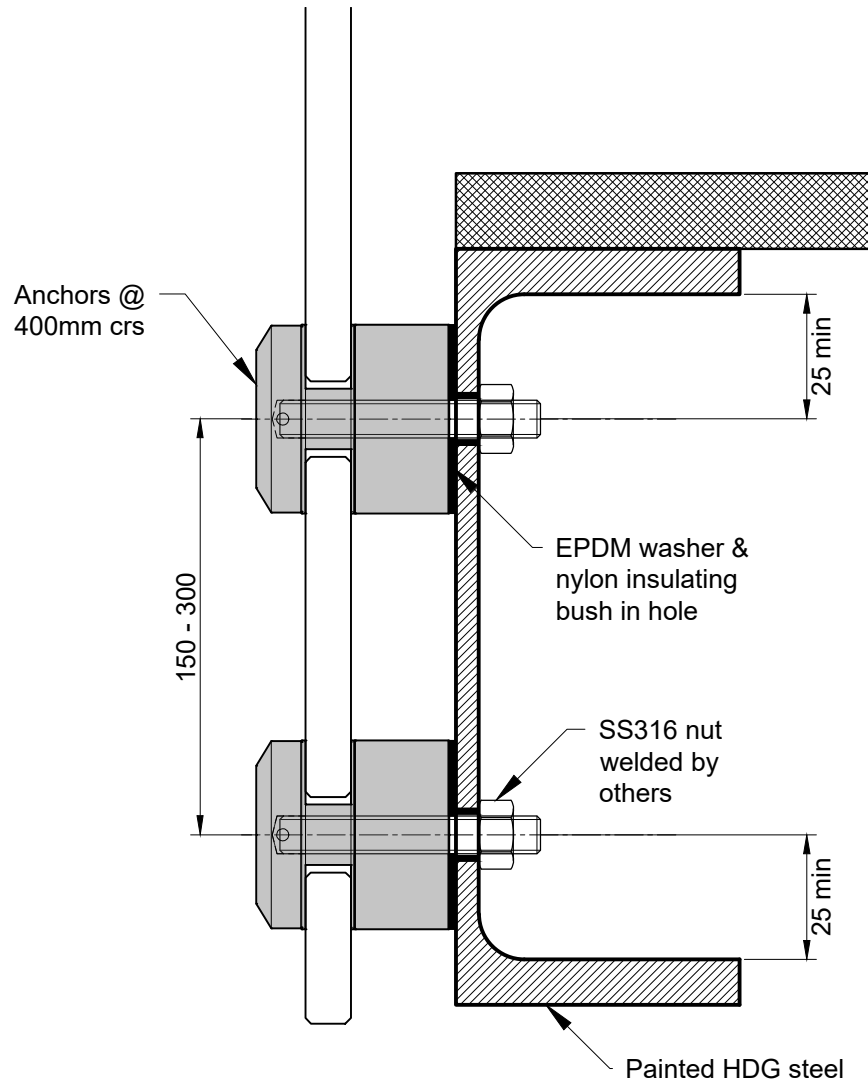


DETAIL A - CONCRETE

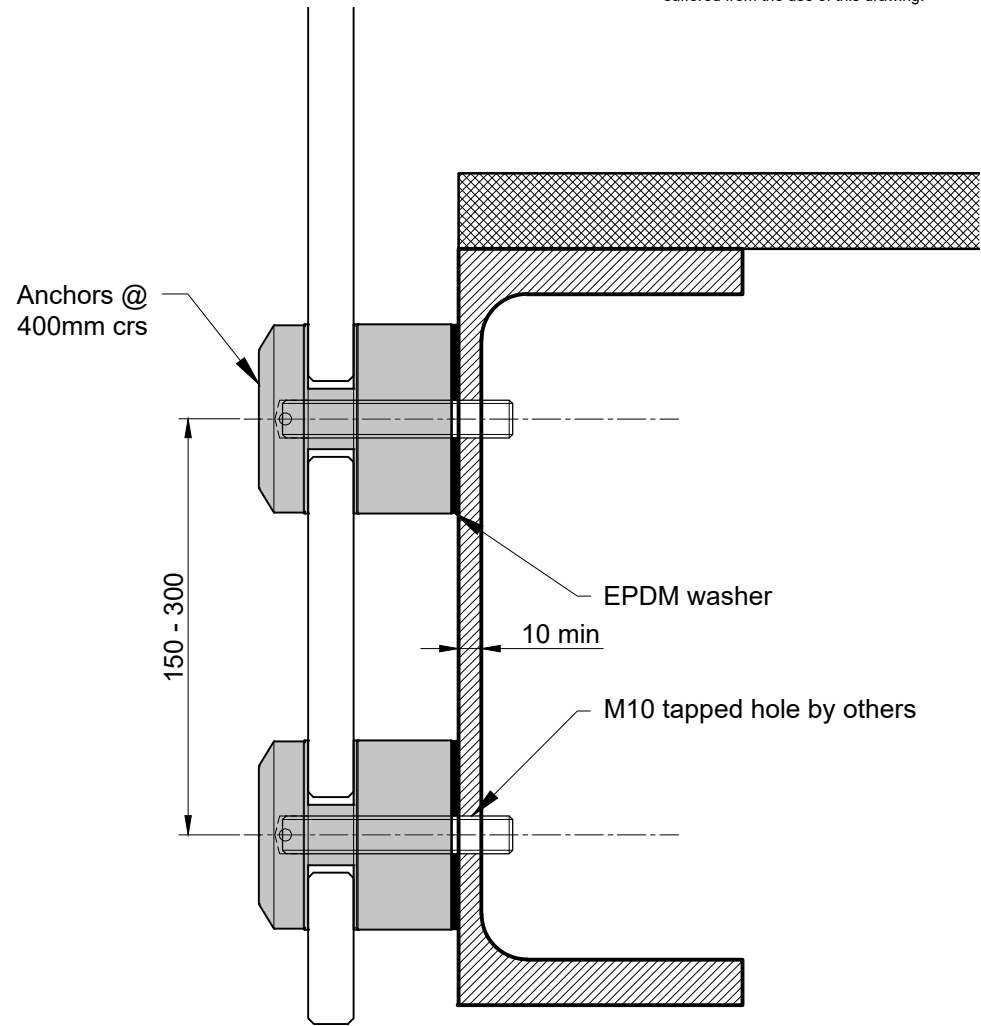


DETAIL B - SG 8 TIMBER

This drawing is provided as a general guide only. Viridian Glass Ltd Partnership disclaim any responsibility for loss or damage suffered from the use of this drawing.

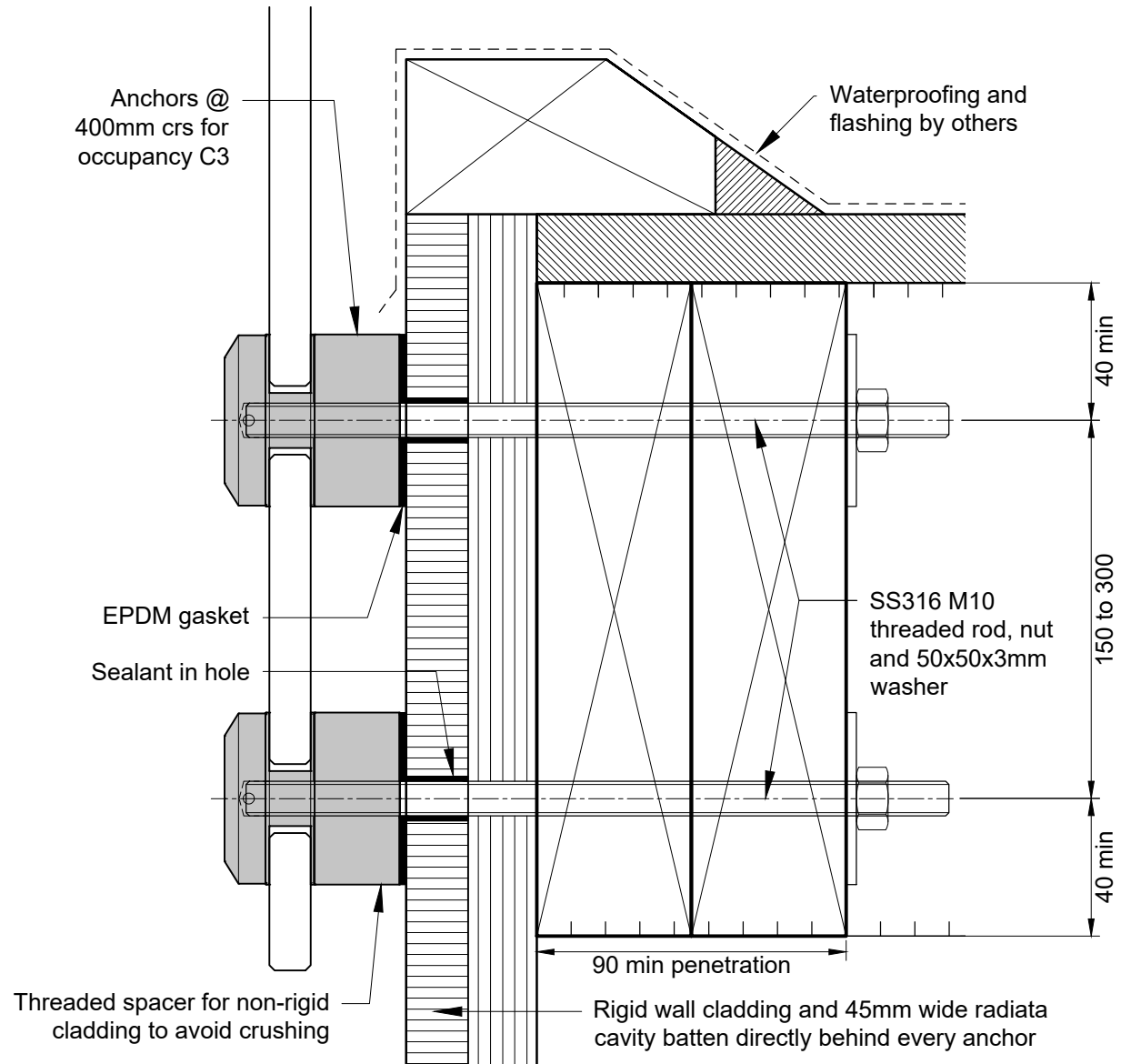


DETAIL A - STEEL - EXTERNAL



DETAIL B - STEEL - INTERNAL

This drawing is provided as a general guide only. Viridian Glass Ltd Partnership disclaim any responsibility for loss or damage suffered from the use of this drawing.



### FIXING DETAIL - DRY CONCEALED SG 8 TIMBER