

NOTES:

1. This proprietary balustrade system complies with New Zealand Building Code Clause B1 Structure, B1/AS1 Amendment 15, B1/VM1, F2 Hazardous Building Materials and F4 Safety From Falling Third Edition, subject to:

- all products meeting the required performance specification
- site installation carried out in accordance with the intent of this drawing

2. Based on barrier loads from AS/NZS 1170.1 and extra high wind zone (2.13 kPa) or less, maximum height H above floor level and safety glass options are:

For residential occupancies A, A(other) & C3 of Table 3.3 AS/NZS 1170.1

Maximum height H 1100mm

Safety glass options according to 22.4.3 and Table 14 of NZS 4223.3:2016 are:

- 12mm toughened glass with interlinking rail at 1000 mm above FFL
- 13.2mm EVA toughened laminated glass with interlinking gap clamps and a maximum pane width of 2000mm
- 13.52mm SentryGlas toughened laminated glass with a minimum pane width of 1000mm

Maximum height H 1300mm

Safety glass options according to 22.4.3 and Table 14 of NZS 4223.3:2016 are:

- 15mm toughened glass with interlinking rail at 1000 mm above FFL
- 17.2mm EVA toughened laminated glass with interlinking gap clamps and a maximum pane width of 2000mm
- 17.52mm SentryGlas toughened laminated glass with a minimum pane width of 1000mm

-Interlinking rail or gap clamps must be connected to each glass pane, structural post, or building element as required by NZS 4223.3:2016

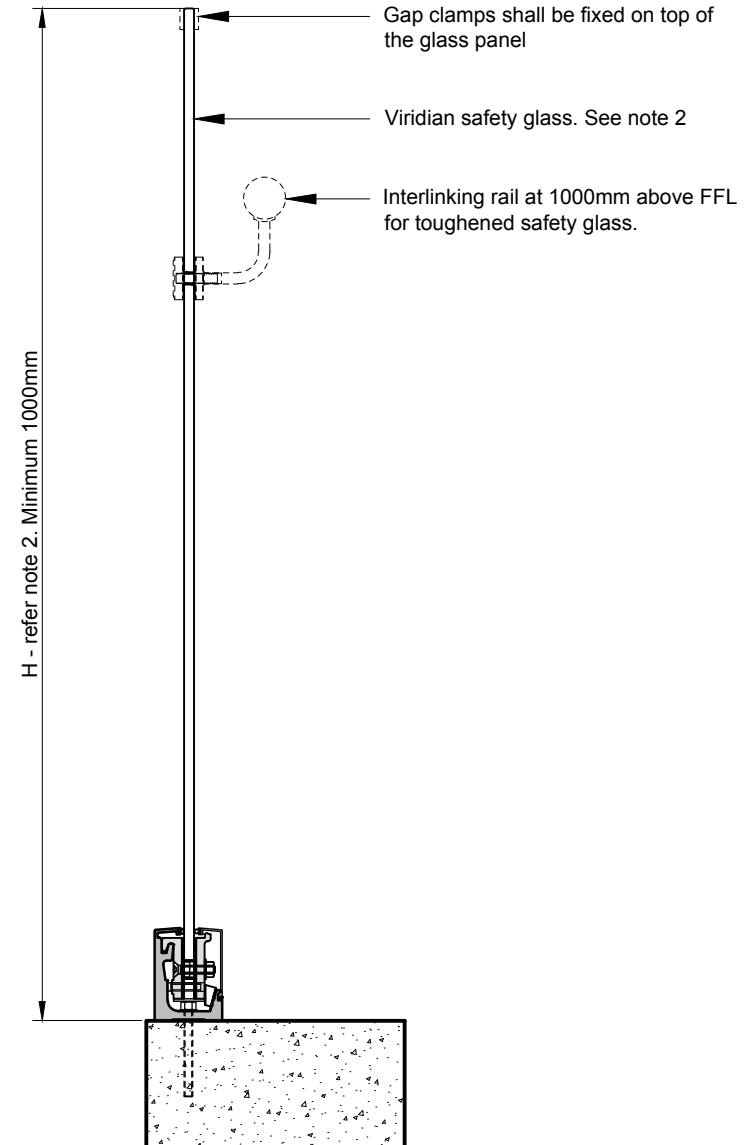
-Gap clamps shall be fixed on top of the glass panel.

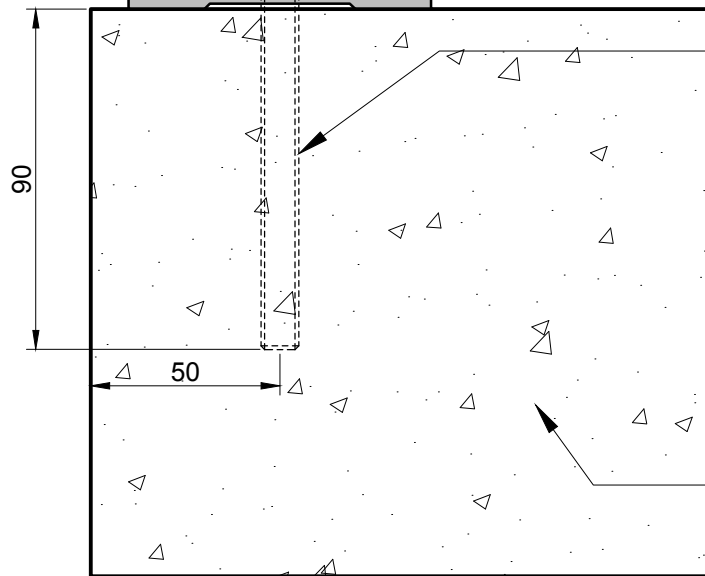
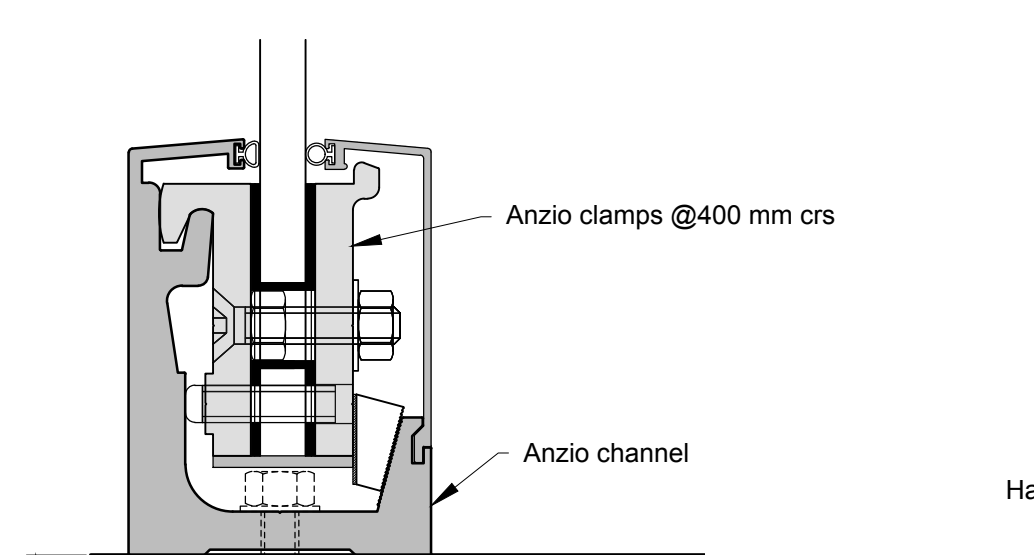
3. Concrete, steel and timber design is the responsibility of others.

4. A handrail of 32-50mm diameter is required for stairs and ramps exceeding 1:20 slope. Fit handrail between 900mm and 1000mm above the pitchline. Refer NZBC D1/AS1.

5. The distance between the base fixing and the end of the channel or a joint must not exceed 200mm.

DO NOT INSTALL THIS BALUSTRADE SYSTEM OVER WATERPROOFING MEMBRANE





**FIXING DETAIL A
CONCRETE**

Anzio clamps @400 mm crs

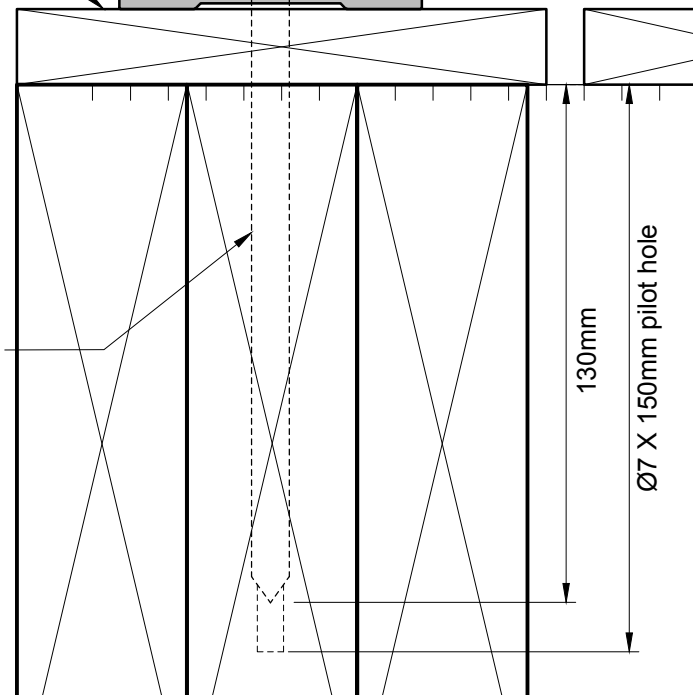
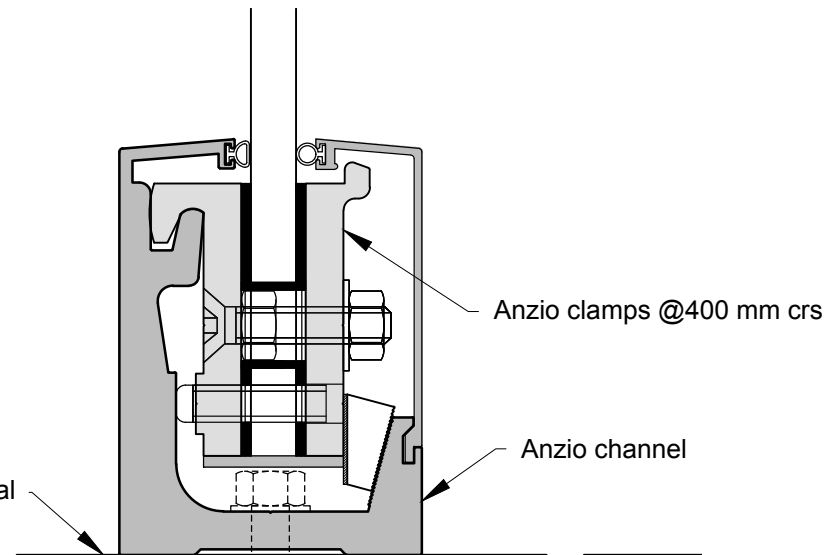
Anzio channel

SS316 M10 threaded rod
in Ramset Epcon C6 or
Hilti HY-200-R anchor @
400 mm crs

SS 316, M10 lagscrews @ 200mm crs
maximum with min. 130mm penetration.
Drill Ø7 pilot hole at 150mm deep.

Minimum fcc 30 concrete.
Refer note 3
on drawing no ARF-1

Hard decking material



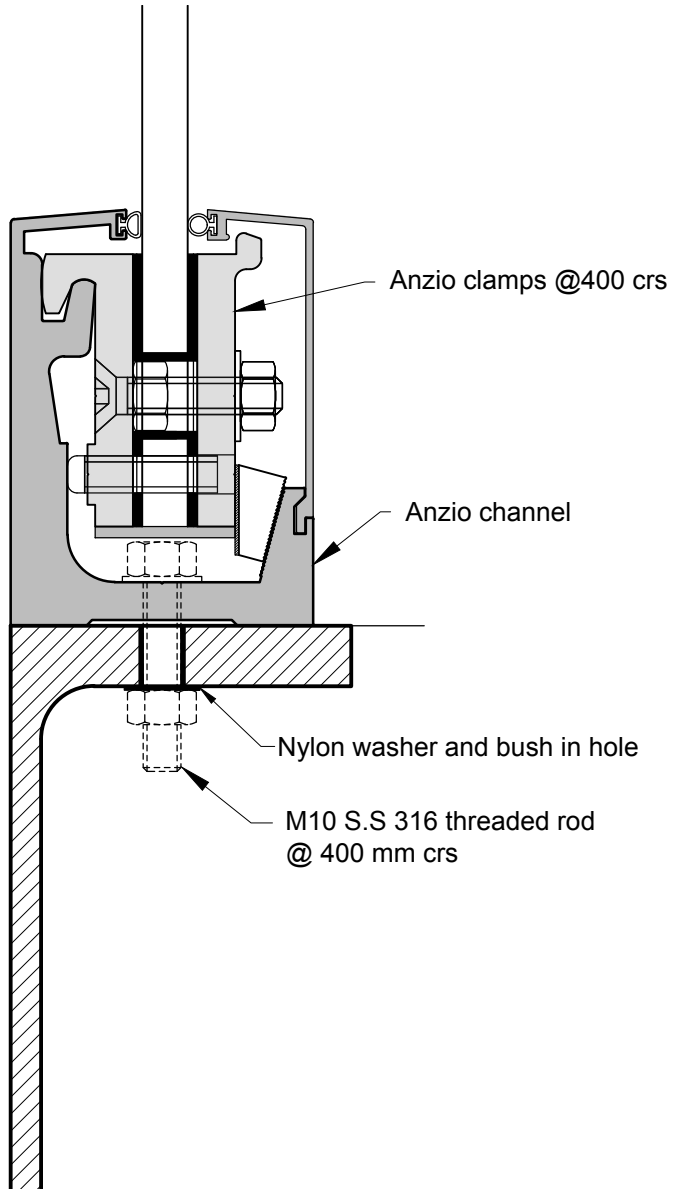
**FIXING DETAIL B
WET EXPOSED SG8 TIMBER**

Anzio clamps @400 mm crs

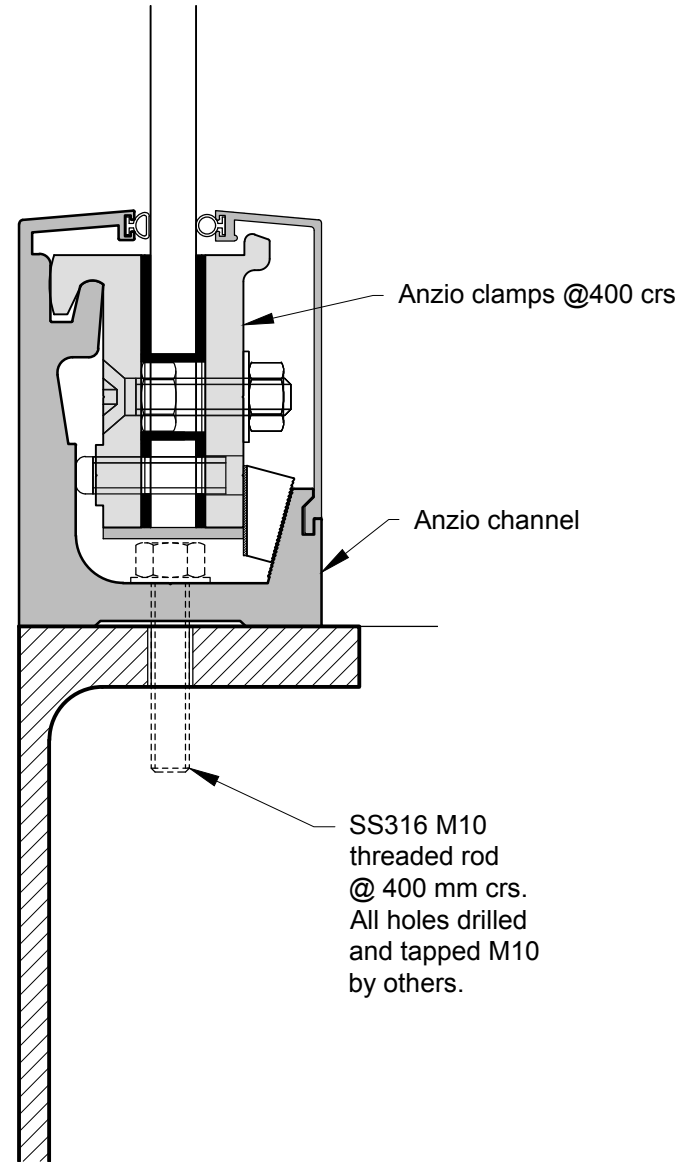
Anzio channel

130mm

Ø7 X 150mm pilot hole



FIXING DETAIL A - STEEL



FIXING DETAIL B - STEEL
FOR INTERNAL INSTALLATION ONLY